



INSTRUCTIONS

-J03705

REV. 2005-04-04

FRONT DETACHABLE DOCKING KIT

GENERAL

Kit Number

53803-06

Models

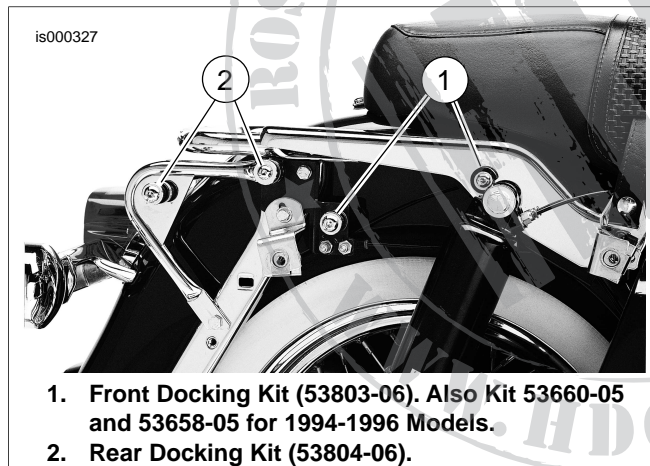
This kit fits all 1997 and later FL Touring models except FLHTC/I Electra Glide® Classic) and FLHTCUI (Ultra Classic® Electra Glide®).

This kit also fits 1994 through 1996 models with additional parts when installing Backrest Kit (52805-97A).

NOTES

Figure 1 shows the mounting locations for the Front Docking Kit (53803-06) and Rear Docking Kit (53804-06).

These kits must be installed to allow for the proper mounting of certain Detachable Harley-Davidson Genuine Motor Accessories.



1. Front Docking Kit (53803-06). Also Kit 53660-05 and 53658-05 for 1994-1996 Models.
2. Rear Docking Kit (53804-06).

Figure 1. Docking Point Locations

Additional Parts Required For 1994-1996 Models

Detachable Passenger Sissy Bar Upright (52805-97A) accessory requires the purchase of kit 53660-05 (Figure 1, item 1) and 53658-05, consisting of two 5/16-18 locknuts. (Figure 1, item 2). These kits are available separately from your Harley-Davidson Dealer.

NOTE

This instruction sheet references Service Manual information. A Service Manual for your model motorcycle is required for this installation and is available from a Harley-Davidson Dealer.

Kit Contents

See Figure 8, Figure 9, and Table 3.

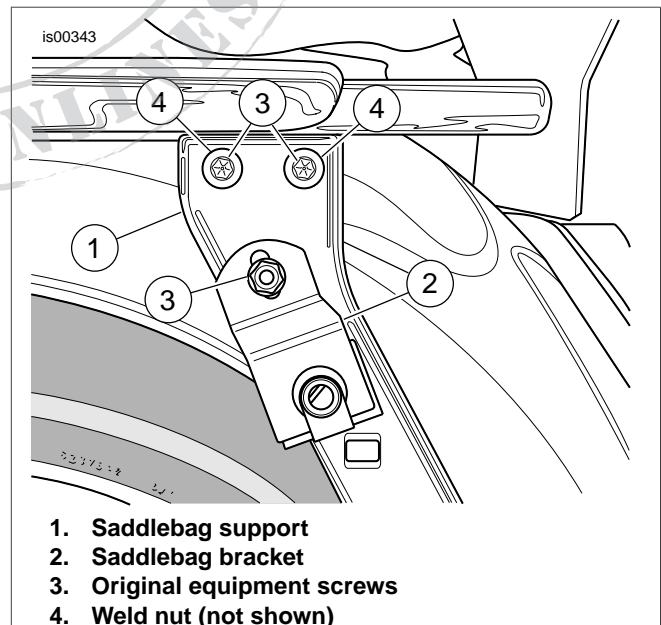
DETACHABLE ACCESSORIES

For models using the following detachable accessories, complete these steps:

Table 1. Detachable Accessories

Description (Quantity)	Part Number
Detachable Solo Tour-Pak®	53260-02
Detachable Passenger Sissy Bar Upright (separate purchase of Kit 53660-05 is required)	52805-97A
Detachable Passenger Sissy Bar Upright	52933-97A
Detachable Passenger Sissy Bar Upright	52935-04

1. Refer to the Service Manual and follow the instructions given to remove the saddlebags.
2. Remove fender support cover on side that has air fitting(s) and save for installation.
3. Remove air fitting(s) from bracket and discard bracket.
4. Remove and discard existing screws (3) shown in Figure 2 from each side of the motorcycle. Save washer from bottom screw for saddlebag bracket installation.



1. Saddlebag support
2. Saddlebag bracket
3. Original equipment screws
4. Weld nut (not shown)

Figure 2. Original Equipment Screws (left side shown)

NOTES

See Figure 1. The instructions and hardware used will differ, depending upon whether the Front Docking Kit (53803-06) is installed alone or with Rear Docking Kit (53804-06).

See Figure 8. The front docking-point mounting brackets (1) are side-specific. The letters stamped near the lower holes must face outward, and identify the front (F) and rear (R) positions.

5. Position the mounting bracket (1) on one side of the motorcycle.
6. **Front Docking Kit Installed Alone.** See Figure 8. Install the mounting bracket as follows:
 - a. Install 5/16-18 x 1 in. (25 mm) long screw (8) in the upper front hole.
 - b. Install 1/8 in. (3.2 mm) thick spacer (5) on each screw, between the mounting bracket (1) and the original equipment saddlebag support bracket (A).
 - c. Finger-tighten both screws.

Front Docking Kit Installed With Rear Docking Kit. See Figure 9. Install the mounting bracket as follows:

- a. Install 5/16-18 x 1 in. (25 mm) long screw (8) from front docking kit (53803-06) in the upper front hole of bracket (1), and through front of bracket (B) from rear docking kit (53804-06), placed between mounting bracket (1) and original equipment saddlebag support bracket (A).
 - b. Install 5/16-18 x 2-1/4 in. (57 mm) long screw and lockwasher (D), docking point (C), and 0.386 in. (9.8 mm) thick spacer (E) from rear docking kit (53804-06) in the upper rear hole of bracket (B) from rear docking kit (53804-06), placed between mounting bracket (1) and original equipment saddlebag support bracket (A).
 - c. Finger-tighten both screws.
7. Install 1/4-20 screw (item 9, length is 1 in. or 7/8 in. depending on model) and washer (previously saved) through slot in saddlebag mounting bracket (G).
 8. **For FLHR, FLHT, or FLTR models:** See Figure 9. Insert threads through bottom hole of mounting bracket (1), directly under screws previously installed.
For FLHRC or FLHRS models: See Figure 9. Place 9/16 in. (14.3 mm) thick spacer (11) onto screw threads, and insert threads through the bottom hole of mounting bracket (1), directly under screws previously installed.
 9. Place 1/8 in. (3.2 mm) thick spacer (10) onto screw threads, and insert threads through saddlebag support bracket (A) and into clip nut. Torque screw to 10-14 ft-lbs (13.6-19.0 Nm).
 10. Torque both upper screws to 15-19 ft-lbs (20.3-25.8 Nm).
 11. Repeat Steps 5 through 10 for opposite side.

12. Fasten air hose and fitting(s) as needed:
 - a. **For 1997-2001 models:** Fasten two air fittings through the lowest two holes (marked "F" and "R") in the right-side bracket.
 - b. **For 2002 models:** This model only has one air fitting, which must be mounted in the hole marked "F" on the right-hand side bracket.
 - c. **For 2003 and later models:**
 - (1) Remove left-side shock-absorber air hose from air valve, and reroute it underneath top shock mount.
 - (2) Locate rearmost unused hole on underside of fender strut, just in front of left shock.
 - (3) Use tie wrap to anchor air hose to this hole and prevent it from getting kinked or pinched.
 - (4) Re-install air hose to air valve, and install air valve in hole marked "F" on left-hand side bracket.
 - (5) Add air to shock absorbers according to instructions in the Service Manual.

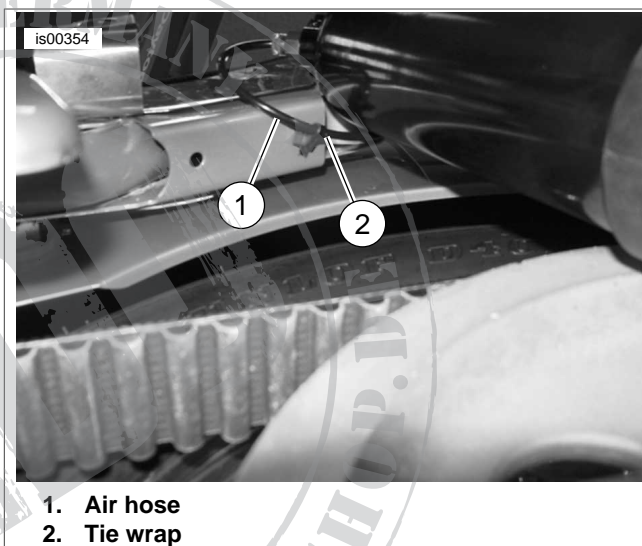
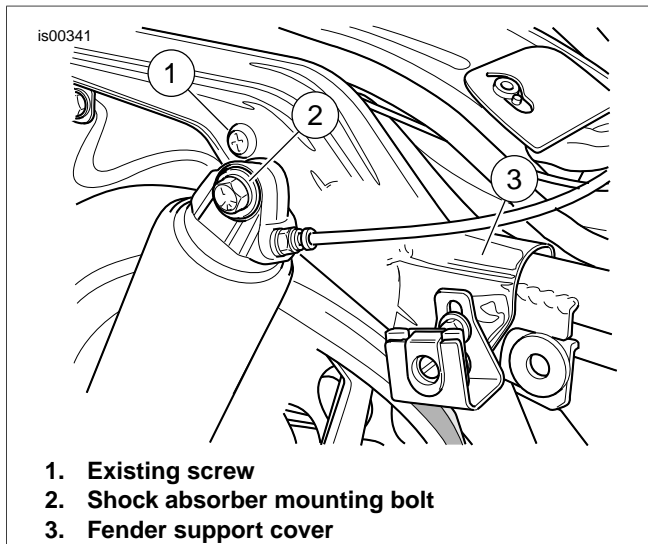


Figure 3. Air Hose Routing for 2003 and Later Models

13. See Figure 6, Figure 8, and Figure 9. Place a washer (6) onto the threads of a button-head screw (4) from this kit. Place a docking point (3), oriented as shown, over the screw threads, followed by a spacer (5).
14. Insert screw threads as follows:
 - a. **For 1994-1996 models:** Through rearmost hole (H) in the mounting bracket (1).
 - b. **For 1997 and later models:** Through frontmost hole (H) in mounting bracket (1).
 - c. Insert screw threads through larger hole in bracket (53805-99, item K, part of Rack or Sissy Bar Upright Kit) and fasten loosely in place with locknut (7). Leave locknut slightly loose for docking-point adjustment in the next step.
15. See Figure 4. Remove the existing Phillips screw (1) from the hole directly behind the upper shock absorber mounting bolt on side with frame cover still installed.



1. Existing screw
2. Shock absorber mounting bolt
3. Fender support cover

Figure 4. Front Docking Point Locations

(different detachables latch in different locations). Torque fasteners to 45-47 ft-lbs (61.0-63.7 Nm).

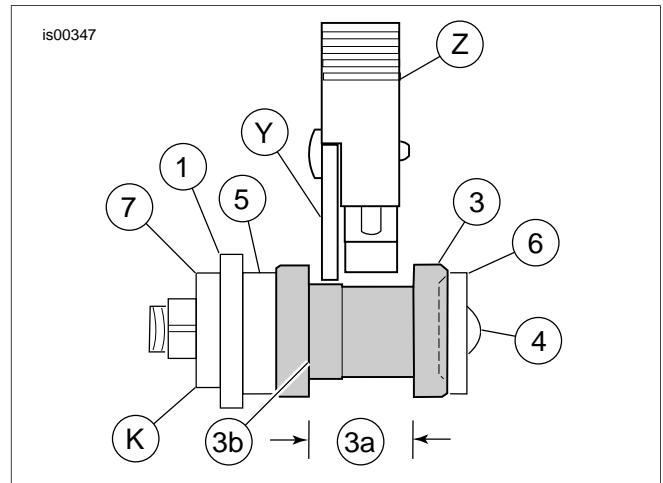
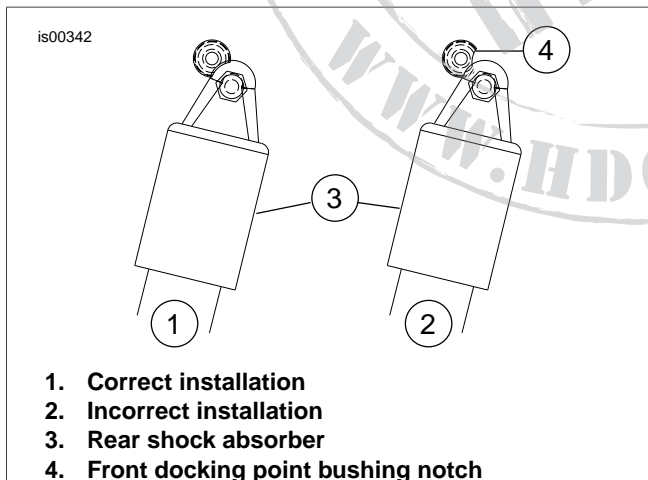


Figure 6. Proper Alignment of Latch in Docking Point

16. See Figure 8 and Figure 9. Obtain a docking point bushing (14 or N), screw (12), and flat washer (13) from the kit.
17. Place the flat washer over the threads of the screw, followed by the bushing.
18. Re-install fender support cover previously removed using docking point screw in place of Phillips screw.
19. Insert the screw threads through the smaller hole in bracket 53805-99 (item A, part of the Solo Tour-Pak® Rack or Sissy Bar Upright Kit), and the chrome rear fender support cover. Thread the screw into the weld nut in the fender support (or nut (O) for 1994-96 models).
20. See Figure 5. Rotate the bushing notch (4) into the "correct" position (1).
21. Tighten screw to 19 ft-lbs (26 Nm).
22. Repeat steps 1 through 6 for opposite side.

Table 2. Proper Alignment of Latch in Docking Point

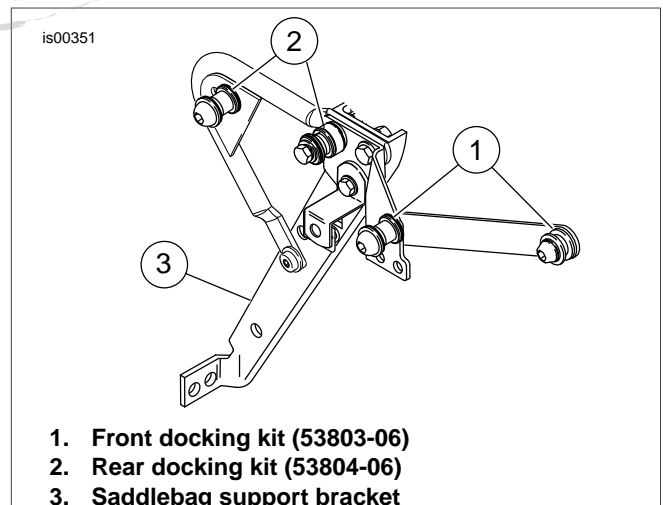
Item	Description (Quantity)
<i>Numbers and letters are same as Service Parts List.</i>	
1	Mounting bracket
3	Docking point
3a	Docking point neck
3b	Raised surface of docking point
4	Button head screw
5	Spacer
6	Flat washer
7	Locknut
K	Bracket from rack or upright kit
Items not in Service Parts list.	
Y	Luggage rack or sissy bar upright sideplate
Z	Luggage rack or sissy bar upright latch



1. Correct installation
2. Incorrect installation
3. Rear shock absorber
4. Front docking point bushing notch

Figure 5. Position of Docking Point Notch

23. See Figure 6. Fasten detachable passenger backrest uprights or luggage rack to docking points as described in the instruction sheet for that accessory.
Push the forward notches of the accessory completely into the docking points in position (1), then fasten the rear notches into the docking points in appropriate position



1. Front docking kit (53803-06)
2. Rear docking kit (53804-06)
3. Saddlebag support bracket

Figure 7. Front and Rear Docking Kits

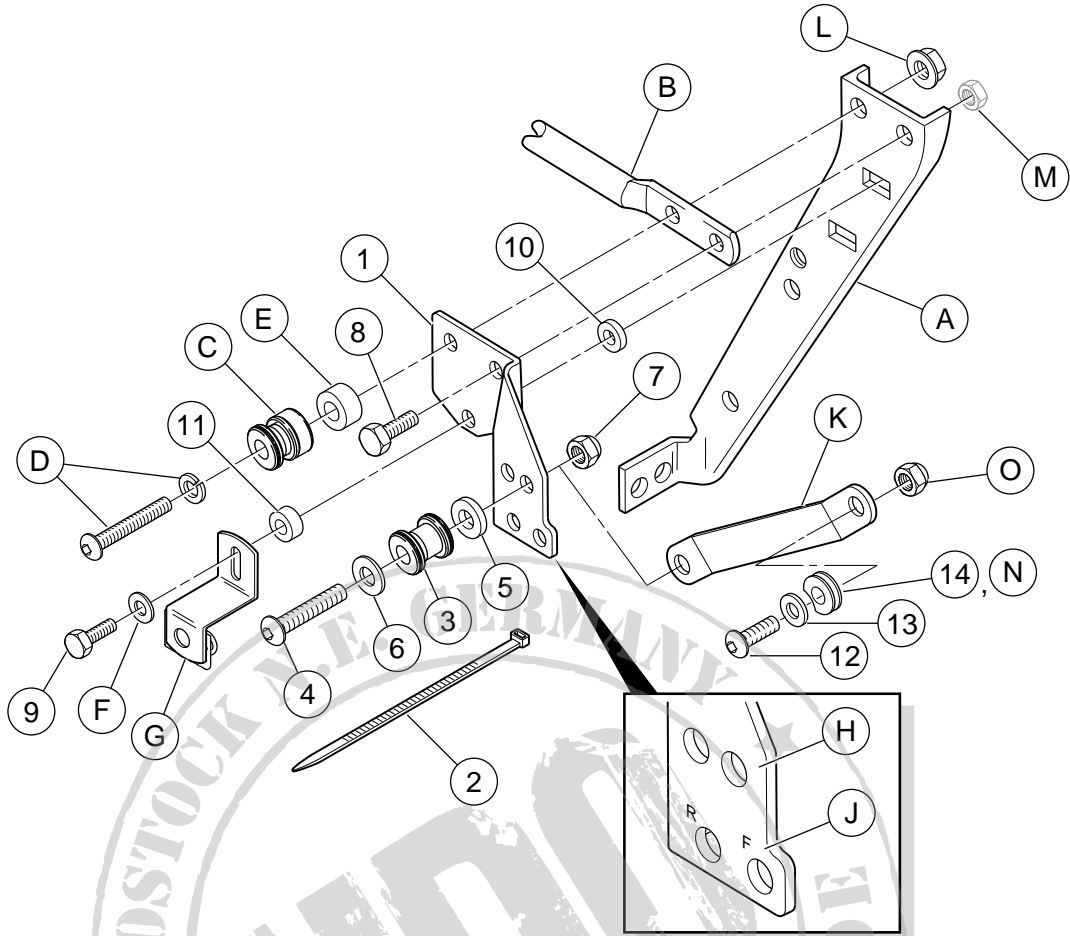


Figure 9. Service Parts: Front Docking Kit Installed with Rear Docking Kit (53804-06)

Table 3. Service Parts: Front Detachable Docking Kit

Item	Description (Quantity)	Part Number
1	Mounting bracket, right side	53759-96B
	Mounting bracket, left side (not shown)	53758-96C
2	Tie wrap	10073
3	Docking point (2)	53684-96A
4	Screw, button head, hex socket, 3/8-16 x 2 in. (51 mm) (2)	4215
5	Washer, hardened, 3/8 in. I.D., 1/8 in. (3.2 mm) thick (6)	6532
6	Flat washer, chrome, 3/8 in. I.D., 1/16 in. (1.6 mm) thick (2)	94067-90T
7	Hex locknut, Nylok, thin, 3/8-16 (2)	7667
8	Capscrew, hex head, 5/16-18 x 1 in. (25.4 mm) (4)	4017
9	Capscrew, hex head, 1/4-20 x 7/8 in. (22.2 mm) (2) (for all models except FLHRC/I and FLHRS/I)	3802W
	Capscrew, hex head, 1/4-20 x 1-1/2 in. (38.1 mm) (2) (for models FLHRC/I and FLHRS/I)	2872W
10	Spacer, 1/4 in. I.D., 1/8 in. (3.2 mm) thick (2)	5735
11	Spacer, 1/4 in. I.D., 9/16 in. (14.3 mm) thick (2) (for models FLHRC/I and FLHRS/I)	5839
12	Screw, button head, hex socket, 5/16-18 x 1 in. (2)	94394-92T
13	Washer, flat (2)	94066-90T
14	Bushing, docking point - notched (2)	53123-96

Table 3. Service Parts: Front Detachable Docking Kit

Item	Description (Quantity)	Part Number
Items mentioned in text, but not included in kit:		
A	Original equipment saddlebag support bracket	
B	Rear docking-point bracket from Kit 53804-06	
C	Docking point from Kit 53804-06	
D	2-1/4 in. (57 mm) long button-head screw and lockwasher from Kit 53804-06	
E	0.385 in. (9.8 mm) spacer from Kit 53804-06	
F	Original equipment washer	
G	Original equipment saddlebag mounting bracket	
Notes:		
H	The docking point on each side must be mounted in the front (forward) hole for 1997 and later models, and in the back (rearward) hole for 1994 through 1996 models.	
J	For 1997 through 2001 models, the two air fittings mount in the two bottom holes. For 2002 models, mount the single air fitting in the front (forward) hole on the right-side bracket. For 2003 and later, the air fitting must be relocated to the forward hole on the left-side bracket.	
K	Bracket from Luggage Rack or Sissy Bar Upright Kit.	
L	Locknut from kit 53658-05 (for 1994 through 1996 models). Weld nut on saddlebag support bracket (A) (for 1997 and later models).	
M	Weld nut on saddlebag support bracket (A).	
N	Bushing, docking point - no notch (2) (from Kit 53660-05, for 1994 through 1996 models).	
O	Nut (2) (from Kit 53660-05, for 1994 through 1996 models).	

