



INSTRUCTIONS

-J00627

REV. 2006-09-20

TOUR-PAK® TOP RACK KIT

GENERAL

Kit Number

53665-87, 91793-85

Models

For model fitment information, please see the P&A Retail Catalog or the Parts and Accessories section of www.harley-davidson.com (English only).

Kit Contents

See Figure 1 and Table 1.

INSTALLATION

TEMPLATE (KING TOUR-PAK® APPLICATIONS ONLY)

NOTE

The location of the Tour-Pak® spoiler has a direct relationship to the location of Tour-Pak® mounted luggage racks. The template will locate the Tour-Pak spoiler in the correct position for the following luggage racks:

Mini rack-Part No. 53100-96

Nostalgic-Part No. 53101-96

Premium-Part No. 53665-87

1. Identify if the installation of a Tour-Pak® mounted luggage rack is desired in the future. If you do plan to add a luggage rack, determine which of the above racks will be used and cut the template along the appropriate line.
2. Carefully place template on top of the Tour-Pak® aligning edges of the template with top surface of the Tour-Pak®. Tape the template to the Tour-Pak® top in the desired location. The template will help you to properly locate your rack so that you may add a spoiler in the future.

TOUR-PAK® TOP RACK

1. See Figure 1. Slip mounting pads (1) on mounting bosses of top rack (2). Position Tour-Pak® Top Rack on Tour-Pak® cover in the desired mounting location.

NOTE

Position Tour-Pak® Top Rack with upright toward rear of motorcycle. Kit Number 53665-87: position rack with wide upright toward rear of vehicle. Do not mount top rack too far forward to avoid contact with passenger.

2. Carefully raise Tour-Pak® Top Rack and place masking tape (A) on Tour-Pak® cover where four mounting bosses (B) contact cover.

3. Mark the position of the mounting pads on the tape.
4. Remove the Tour-Pak® Top Rack and use a 9/32 in. drill bit to drill four holes through the Tour-Pak® cover.
5. Remove the masking tape.

NOTE

Apply sealant between bottom of Tour-Pak® cover and rubber flat washer, and around screw thread to prevent leakage.

6. See Figure 1. Lift Tour-Pak® cover, position top rack over holes and install bolts (3), lockwashers (4), flat washers (5) and rubber washers (6).
7. Tighten luggage rack bolts.

WARNING

See the Accessory and Cargo section in your Owner's Manual. Improper loading of cargo or installation of accessories can affect motorcycle stability and handling, which could result in death or serious injury. (00021a)

NOTE

Maximum luggage rack weight capacity is ten pounds (4.5 Kg).

WARNING

Do not exceed luggage rack weight capacity. Too much weight can cause loss of control, which could result in death or serious injury. (00373a)

NOTE

Combined load of top rack and Tour-Pak® must not exceed 25 lbs (11.3 Kg). Overloading the motorcycle will cause unstable handling and reduced braking efficiency, which could result in death or serious injury.

WARNING

Do not exceed tour-pak weight capacity. Too much weight can cause loss of control, which could result in death or serious injury. (00401b)

- Be sure top rack cargo is secure and will not shift while riding. Recheck load periodically.
- An item with a large surface area, such as a duffel bag, that is installed on the top rack can adversely affect vehicle handling.

SERVICE PARTS

is00909

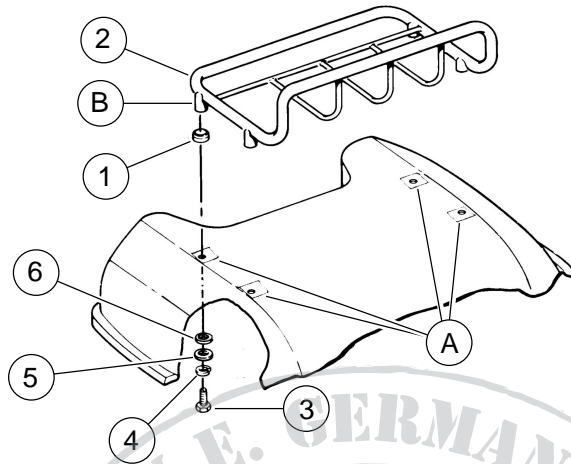


Figure 1. Service Parts: Tour-Pak Rack Kit

Table 1. Service Parts Table: Tour-Pak® Top Rack Kit

Item	Description (Quantity)	Part Number
1	Mounting pad (4)	90869-85A
2	Top Rack	Not Sold Separately
3	Bolt, 1/4-20 x 3/4 in. (4)	3787
4	Lockwasher (4)	7036
5	Flat washer (4)	6703
6	Rubber washer (4) Included with item 1	Included with item 1
7	Template	50001-01
Items mentioned in text, but not included in kit:		
A	Apply masking tape to these locations	
B	Mounting boss	