



INSTRUCTIONS

-J05760

2016-03-04

FLRT UPRIGHT & DOCKING KIT

GENERAL

Kit Number

52300324A, 52300415

Models

For model fitment information, see the P&A Retail Catalog or the Parts and Accessories section of www.harley-davidson.com (English only).

Installation Requirements

Electrical Contact Lube (H-D Part No. 11300004) or equivalent is required for the proper installation of this kit. This item is available from a Harley-Davidson dealer.

Kit Contents

Refer to Figure 3. and Refer to Table 1.

⚠ WARNING

The rider's safety depends upon the correct installation of this kit. If the procedure is not within your capabilities or you do not have the correct tools, have a Harley-Davidson dealer perform the installation. Improper installation of this kit could result in death or serious injury. (00308a)

INSTALLATION

1. Refer to Figure 1. Using a plastic screwdriver, or your finger nail, remove trim covers (2) from the body (1).

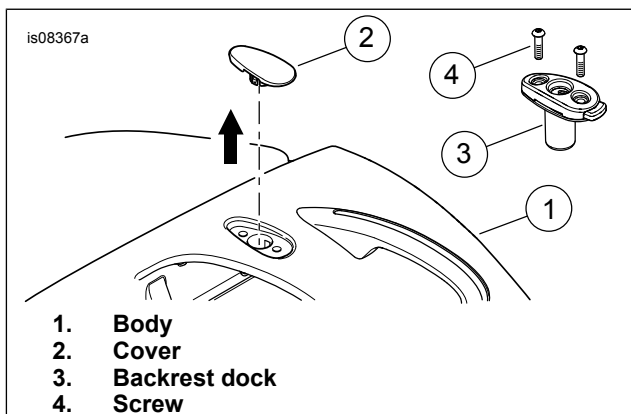


Figure 1. Trim Cover

2. Install the backrest docks (3) using the two screws (4) for each dock. Tighten to 13.56 N·m (120 in-lbs).
3. Refer to Figure 2. Press release button (1) on backrest dock while inserting one leg of the upright. Press release button on other backrest dock while inserting the opposite leg of the upright.

NOTE

The release buttons must return to the original, extended position to complete the installation.

4. While holding both legs of the upright, firmly press the upright further into the backrest docks. The release buttons pop out to the original position.

NOTE

A small amount of electrical contact lube (H-D Part No. 11300004) can be applied to the surface of each O-ring to aid in installation.

5. Refer to Figure 3. If the fit of the upright in the docks is not snug, remove the installed O-rings and replace with the larger diameter O-rings. Repeat steps 3 and 4.

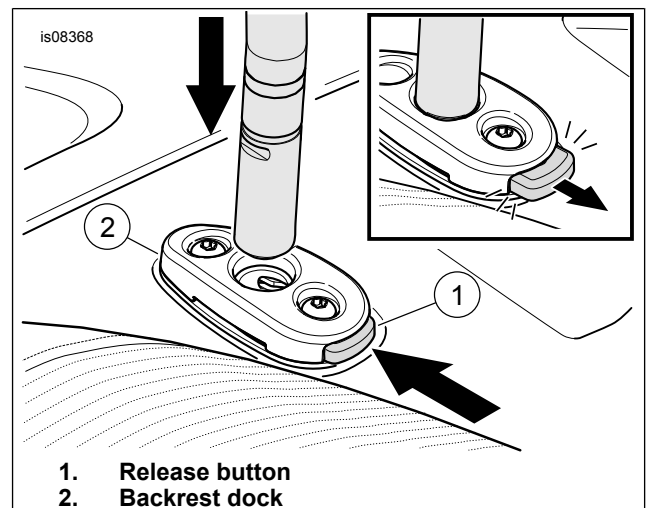


Figure 2. Release Button Locked Position

When upright is removed plugs (5) can be installed. Refer to Figure 2. Follow steps 3-5 for installing or removing plugs.

NOTE

Plugs do not require or use O-rings.



SERVICE PARTS

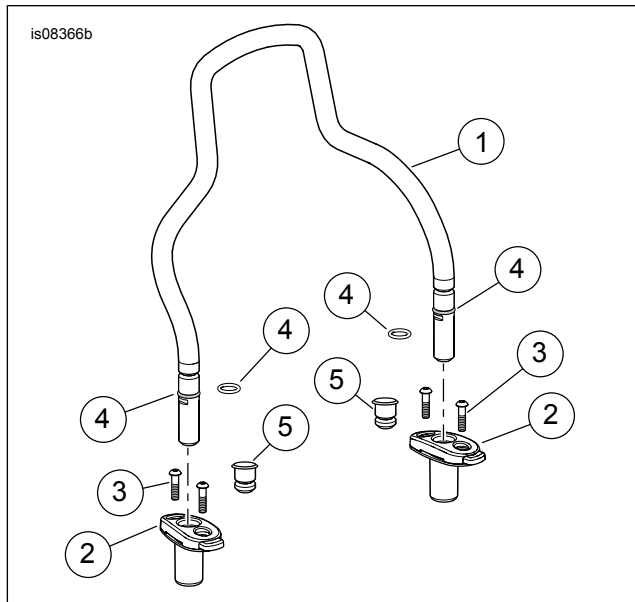


Figure 3. Service Parts: FLRT Upright & Docking Kit

Table 1. Service Parts: FLRT Upright & Docking Kit

Item	Description (Quantity)	Part Number
1	Upright, backrest, chrome	Not sold separately
	Upright, backrest, black	Not sold separately
2	Backrest dock assembly, chrome (2)	52300326A
	Backrest dock assembly, black (2)	52300419
3	Screw (4)	94595-98
4	O-ring service kit	91700038
	• O-ring, smaller diameter (2)	Not sold separately
	• O-ring, larger diameter (2)	Not sold separately
5	Plug, chrome	12100080
	Plug, black	12100098