



INSTRUCTIONS

-J05318

REV. 2011-06-10

FLD DOCKING HARDWARE

GENERAL

Kit Number

52300065

Models

For model fitment information, see the P&A Retail Catalog or the Parts and Accessories section of www.harley-davidson.com (English only).

Additional Parts Required

Loctite® 243 Threadlocker and Sealant - blue (Part Number 99642-97) is required for the proper installation of this kit.

⚠ WARNING

The rider's safety depends upon the correct installation of this kit. Use the appropriate service manual procedures. If the procedure is not within your capabilities or you do not have the correct tools, have a Harley-Davidson dealer perform the installation. Improper installation of this kit could result in death or serious injury. (00333a)

NOTE

This instruction sheet references service manual information. A service manual for your model motorcycle is required for this installation and is available from a Harley-Davidson Dealer.

Kit Contents

See Figure 2 and Table 1.

INSTALLATION

NOTE

To keep the fender aligned, complete ALL the following procedures on one side of the motorcycle before starting the other side.

⚠ WARNING

To prevent accidental vehicle start-up, which could cause death or serious injury, disconnect negative (-) battery cable before proceeding. (00048a)

1. Remove the seat and disconnect the negative battery cable.
2. Remove saddlebags if attached to motorcycle.
3. Start from the right side and remove the top fastener of the shock absorber.
4. Remove the two screws and two saddlebag mounting spools from the frame rail cover and remove the cover.
5. Remove the fender mounting strap (A) from inside the fender and save for reinstallation. Remove two plastic

fasteners, and the black fender spacer (G) from between the fender and fender rail and discard.

6. The fender reflectors must be removed and relocated on the chrome rail cover. Use dental floss or other non-abrasive means of removing the reflector. See "Reflector Installation" for procedures.
7. Install the right side docking bracket (4). Apply a few drops of Loctite to screws and insert screw (9) through the front docking point (D), chrome spacer (10), rail cover (B), frame rail and docking bracket (4) to reinstalled fender mounting strap (A). Apply a few drops of Loctite to screws and insert screw (9) through the rear docking point (E), chrome spacer (10), rail cover (B), frame rail and docking bracket (4) to fender mounting strap (A). Tighten screws to fender mounting strap to 12-18 ft-lbs (16-24 Nm).
8. Apply a few drops of Loctite to screw (8). Install short docking point (2) to front of the installed docking plate with washer (5) and screw (8). Tighten screw to 8 ft-lbs (10.8 Nm).
9. Apply a few drops of Loctite to screw (8). Install long docking point (1) to rear of the installed docking plate with washer (5) and screw (8). Tighten screw to 8 ft-lbs (10.8 Nm).
10. Apply a few drops of Loctite to screw (6). Install lower docking point (F) with a spacer (11) and screw (6) and tighten to 12-18 ft-lbs (16-24 Nm).
11. Install upper shock absorber bolt and tighten to 30-40 ft-lbs (40.7-54.2 Nm)
12. Repeat steps 2 through 11 for the opposite side.
13. Install saddle bags to docking points.

REFLECTOR INSTALLATION

NOTES

- *Ambient temperature should be at least 60 °F (16 °C) for proper adhesion of the reflectors to the sideplates.*
1. Clean the surface of grease, oil and fingerprints with a mixture of 50-70% isopropyl alcohol and 30-50% distilled water. Allow to dry thoroughly.
 2. Remove the liner from the adhesive backing (7) of the reflector, and align the reflector on the chrome fender cover between the docking points. Press the reflector firmly into place and hold in position with steady pressure for 30 seconds. Repeat for the other docking bracket.

PROTECTIVE TAPE

NOTE

Protective tape has been provided to prevent the rear accessory docking points (1) from scratching the saddlebag lids.

1. Align the protective tape with the rear accessory docking point screw on the saddlebag lid. Apply the protective tape so that it will slightly roll over the shoulder of the saddlebag lid and be tucked under the lid between the gasket and lip of the lid.
2. Repeat the procedure for the opposite side.

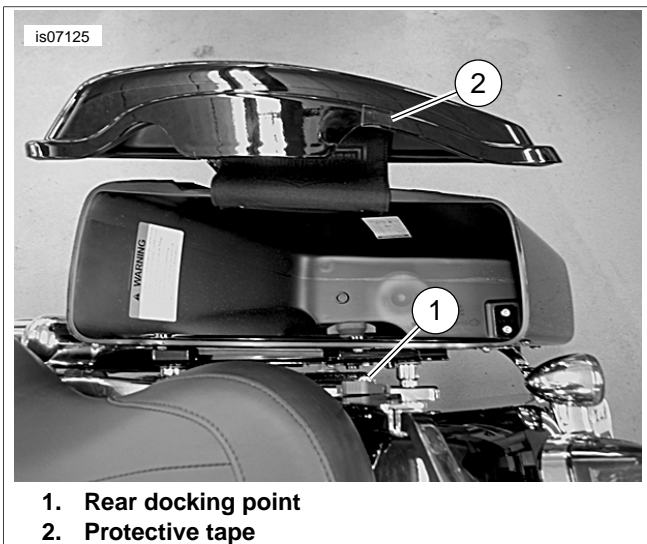


Figure 1. Installing Protective Tape

MAINTENANCE

NOTE

In time docking points may wear, causing the mating luggage rack or sideplates to become loose and rattle. The fit may be tightened using the following procedure.

1. Mark each docking point to indicate the current top position.
2. Remove the docking hardware.
3. Thoroughly remove all existing threadlocking agent from the docking point fastener and mounting hole threads before applying new Loctite 243 - Blue to the screw threads.
4. Rotate the docking points clockwise approximately 45 degrees from the previous position.
5. Tighten the docking hardware to the torque value indicated in the installation procedures.
6. This procedure can be repeated up to three times before replacement of the docking points is recommended.

FINAL ASSEMBLY

1. Connect battery cables, positive cable first, then install the seat.

WARNING

After installing seat, pull upward on seat to be sure it is locked in position. While riding, a loose seat can shift causing loss of control, which could result in death or serious injury. (00070b)



SERVICE PARTS

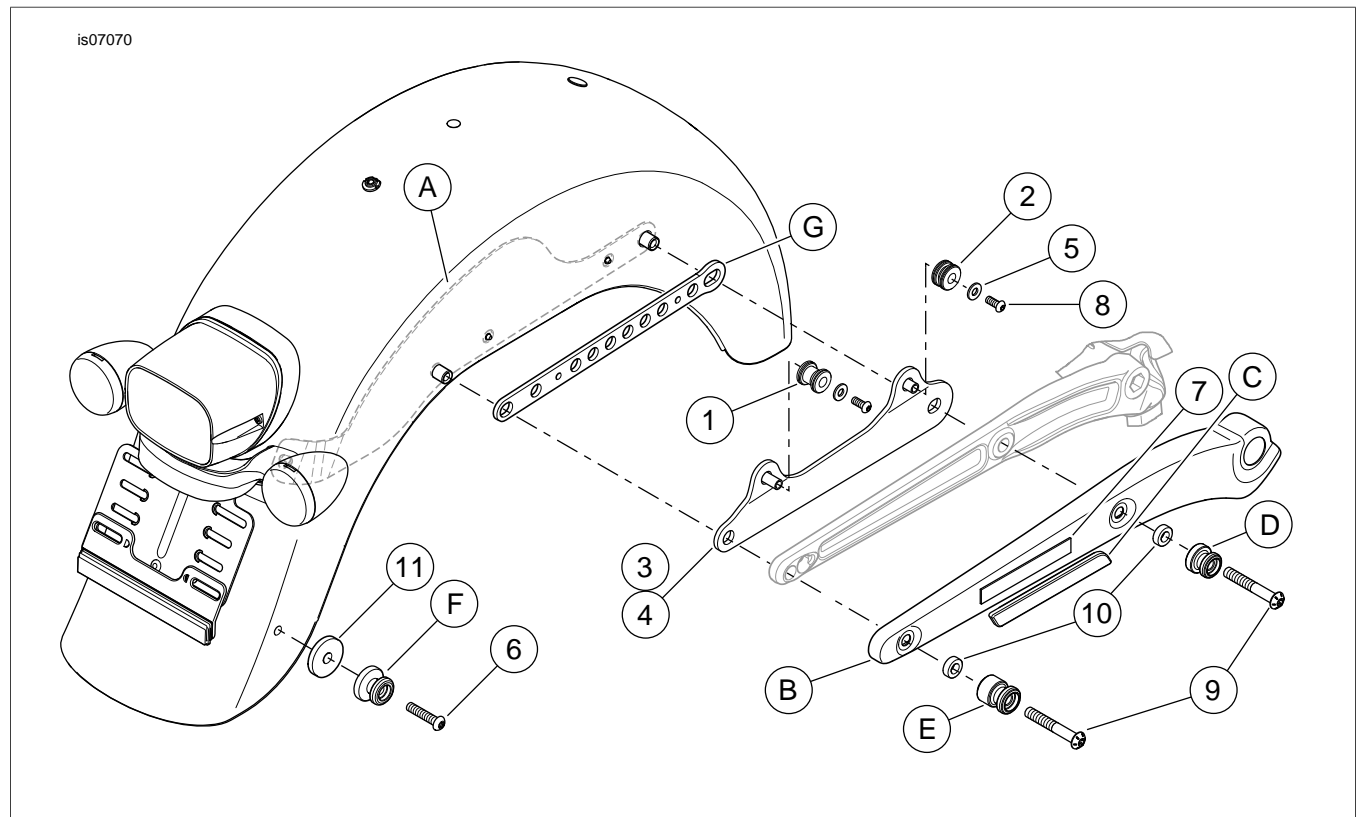


Figure 2. Service Parts: FLD Docking Hardware

Table 1. Service Parts Table

Item	Description (Quantity)	Part Number
1	Docking point, rear (2)	53684-96A
2	Docking point, mini (2)	53967-06
3	Docking bracket, left, chrome (not shown)	Not Sold Separately
4	Docking bracket, right, chrome	Not Sold Separately
5	Plain washer, type A (4)	6339
6	TORX socket button head screw (2)	8329
7	Tape, double sided foam (2)	53791-06
8	Socket button head capscrew, TORX drive (4)	94592-98
9	Button head TORX screw .375-16 x 2.50 (4)	10200045
10	Spacer, special chrome (4)	Not Sold Separately
11	Spacer, special chrome (2)	Not Sold Separately
12	Protective tape (2)	54233-09
Items mentioned in text, but not included in kit:		
A	Fender mounting straps, right and left	
B	Frame rail cover (2)	
C	Reflector (2)	
D	Front saddlebag docking point (2)	
E	Rear saddlebag docking point (2)	
F	Lower saddlebag docking point (2)	
G	Black fender spacer (2), discard	