



# INSTRUCTIONS

-J05322

2011-06-17

## DYNA REDUCED REACH FORWARD CONTROL KIT

### GENERAL

#### Kit Number

50700007, 50700008

#### Models

For model fitment information, see the P&A Retail Catalog or the Parts and Accessories section of [www.harley-davidson.com](http://www.harley-davidson.com) (English only).

#### Additional Parts Required

Separate purchase of LOCTITE® 243 Threadlocker and Sealant - blue (Part No. 99642-97) and Anti-Seize Lubricant (Part No. 98960-97) are required for proper installation of this kit. Both can be purchased from any Harley-Davidson Dealer.

#### ⚠ WARNING

The rider's safety depends upon the correct installation of this kit. Use the appropriate service manual procedures. If the procedure is not within your capabilities or you do not have the correct tools, have a Harley-Davidson dealer perform the installation. Improper installation of this kit could result in death or serious injury. (00333a)

#### NOTE

A service manual for your model motorcycle is required for proper installation of this kit and is available from a Harley-Davidson Dealer.

#### Kit Contents

See Figure 4 and Table 1 and Figure 5 and Table 2.

### INSTALLATION

#### Shifter Assembly

#### ⚠ WARNING

To prevent accidental vehicle start-up, which could cause death or serious injury, disconnect negative (-) battery cable before proceeding. (00048a)

1. Disconnect battery cables, negative (-) cable first.
2. See Figure 4. Disconnect shift linkage from the shifter shaft and lever (4).
3. Remove the left-side rider footrest and bracket assembly. Remove and retain the footrest and fasteners for installation. Discard the remaining hardware.
4. From the kit, press hole plugs (8) into the screw holes on the frame where the stock footrest assembly was mounted.

5. Remove plugs from forward control frame mount (J) and discard.
6. Remove the foot shift lever (A) with shifter peg (D). Save for future use. If the black kit is being installed, transfer shifter peg (D) to the **new** foot shift lever and discard the original.

#### NOTE

See Figure 4. Before removing the transmission shifter lever (H), it is necessary to mark the correct orientation of the lever.

7. See Figure 2. Remove the primary chaincase cover (6) and primary chaincase housing (1). Refer to your service manual for removal procedures.
8. See Figure 1. Draw a mark (4) on the end of the splined shaft (2) aligned with the casting split (3). This will allow the **new** transmission shifter lever to be installed in the same orientation as the old lever.

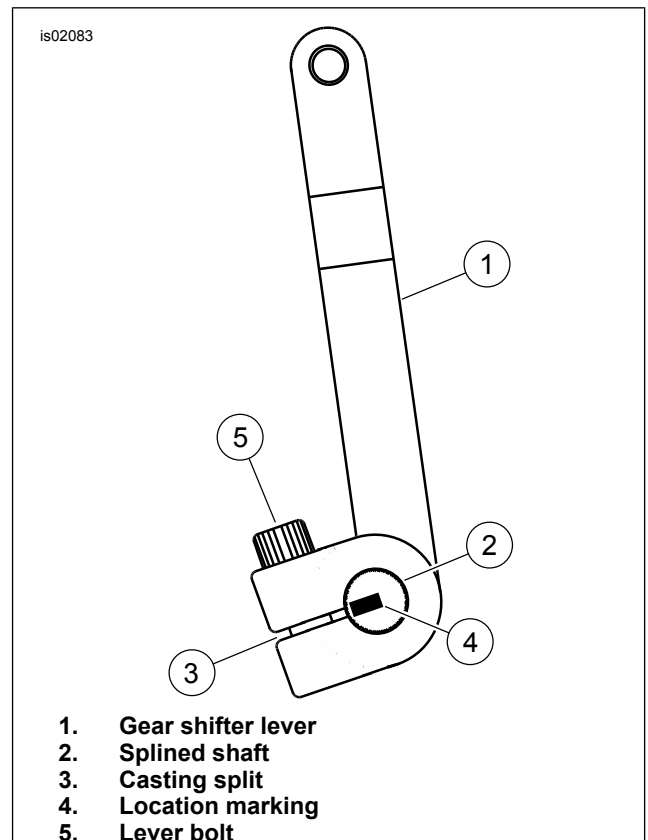


Figure 1. Transmission Shifter Lever Orientation

#### NOTE

See Figure 4. The reduced reach plate (12) is installed between the shifter bracket and frame.

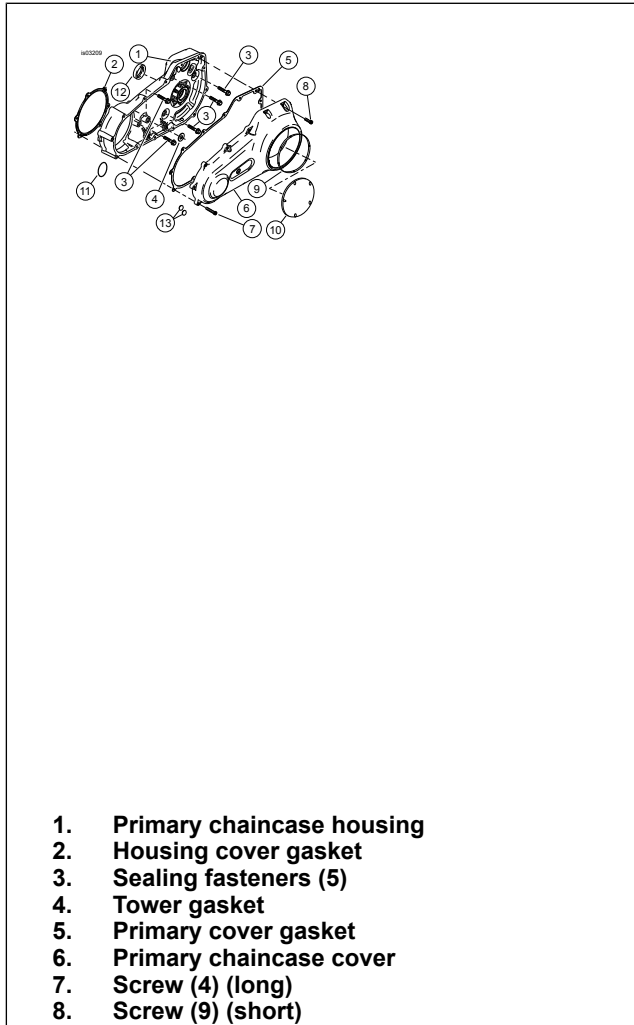
-J05322



Many Harley-Davidson® Parts & Accessories are made of plastics and metals which can be recycled. Please dispose of materials responsibly.

1 / 5

- Loosen lever bolt (5) and remove the old lever. From the kit, install the **new** gear shifter lever ( Figure 4, Item 6) onto the splined shaft in the same orientation as the old shifter lever.



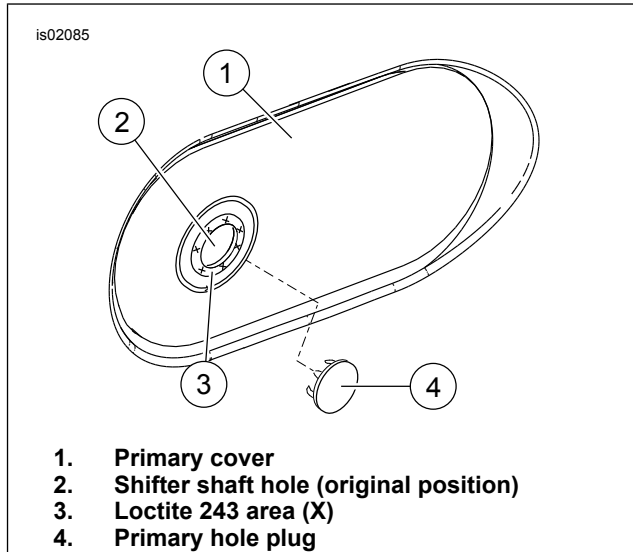
**Figure 2. Primary Chaincase Cover and Housing Components**

- Position the reduced reach plate (12) on the frame where the shifter bracket was mounted with the tapped holes toward the rear and the counter bores facing out. Secure using two screws (10) and tighten to 41–47 N·m (30–35 ft-lbs).
- Install spring washer (5) on the **new** shifter lever shaft (4). Coat the shaft with Loctite Anti-Seize and slide the shaft into the shifter bracket (7). Install the shifter bracket onto the reduced reach plate using two screws (10). Tighten to 41–47 N·m (30–35 ft-lbs).
- Install the left footrest onto the shifter bracket.
- Install **new** shifter rod (1) onto the transmission shifter lever (6) and shifter lever (4). Tighten to 8–10 N·m (70–90 in-lbs).

**NOTE**

After all shifter components are installed, move shifter through entire range of motion and check for interference with other components. Put primary chaincase housing in position and check for proper clearance with shifter linkage components.

- Install foot shift lever and peg assembly on shifter shaft (4) and adjust for rider comfort. Tighten pinch bolt (C) to 24.4–29.8 N·m (18–22 ft-lbs)
- See Figure 2. Using the gaskets and O-rings from the kit, install the primary chaincase housing (1) and cover (6). Refer to your service manual for installation procedures.



**Figure 3. Outer Cover Plug Installation**

- See Figure 3. Clean the area around primary cover hole (2), removing all dirt, oil and grease. Apply Loctite 243 (Harley-Davidson Part No. 99642-97) around opening (3). Insert primary hole plug (4) into opening. Remove any excess adhesive from surface. Allow Loctite to cure for 24 hours before operating vehicle.

**Brake Pedal and Linkage Assembly**

- Remove the right-side rider footrest from the mount clevis. Retain the footrest and hardware for installation.

**NOTE**

Use the flats on the push rod (A) to remove the brake rod from the master cylinder.

- See Figure 5. Loosen the brake rod jam nut (13) at the rear brake master cylinder.
- Rotate the master cylinder push rod to remove the original brake rod.
- Remove and discard the original brake pedal/bracket assembly and brake rod.

**NOTE**

The reduced reach plate (12) is installed between the brake pedal bracket and frame.

- Push hole plugs ( Figure 4, Item 8) into the screw holes on the frame where the stock brake pedal assembly was mounted.
- Position the reduced reach plate on the frame with the tapped hole toward the front and the counter bores facing out. Secure using screw (10) in the lower hole and align the upper hole with the threaded hole in the frame. Tighten to 41–47 N·m (30–35 ft-lbs).

7. Fasten the brake pedal bracket (1) to the frame and reduced reach plate using screws (23 and 10). Tighten the screws to 41–47 N·m (30–35 ft-lbs).
8. Coat the **new** brake pedal pivot shaft (2) with Loctite Anti-Seize.
9. Fasten the new brake pedal pivot shaft (2), brake pedal and footrest mount clevis (5) to the brake pedal bracket (1) using the long Torx screw (6). Tighten the screw to 44–47 N·m (32–35 ft-lbs).
10. Install the jam nut (13) all the way onto the new brake rod (12).

**⚠ WARNING**

**When adjusting brake control rod, never allow more than nine threads to be exposed between control rod and jam nut. If more than nine threads are exposed, brake rod can come apart resulting in loss of rear brake, which could cause death or serious injury. (00306c)**

11. Turn the master cylinder push rod onto the brake rod until about half the threads are used.
12. Connect the brake rod (12) to the brake pedal with clevis pin (8), washer (9) and cotter pin (7).
13. Verify that the water drain hole in the rubber boot (covering the brake rod) is on the bottom of the rubber boot.

14. Turn the push rod on the brake rod until the brake pedal is elevated to an effective rider angle, and using at least half the threads available on the brake rod. Tighten the jam nut against the master cylinder push rod.
15. Fasten the original footrest to the footrest mount clevis (8) using the original fasteners.

**⚠ WARNING**

**Connect positive (+) battery cable first. If positive (+) cable should contact ground with negative (-) cable connected, the resulting sparks can cause a battery explosion, which could result in death or serious injury. (00068a)**

16. Connect the battery cables, positive (+) cable first.

**⚠ WARNING**

**After servicing brakes and before moving motorcycle, pump brakes to build brake system pressure. Insufficient pressure can adversely affect brake performance, which could result in death or serious injury. (00279a)**

**⚠ WARNING**

**Brakes are a critical safety component. Contact a Harley-Davidson dealer for brake repair or replacement. Improperly serviced brakes can adversely affect brake performance, which could result in death or serious injury. (00054a)**

17. Test brakes for proper operation before riding vehicle.

# SERVICE PARTS

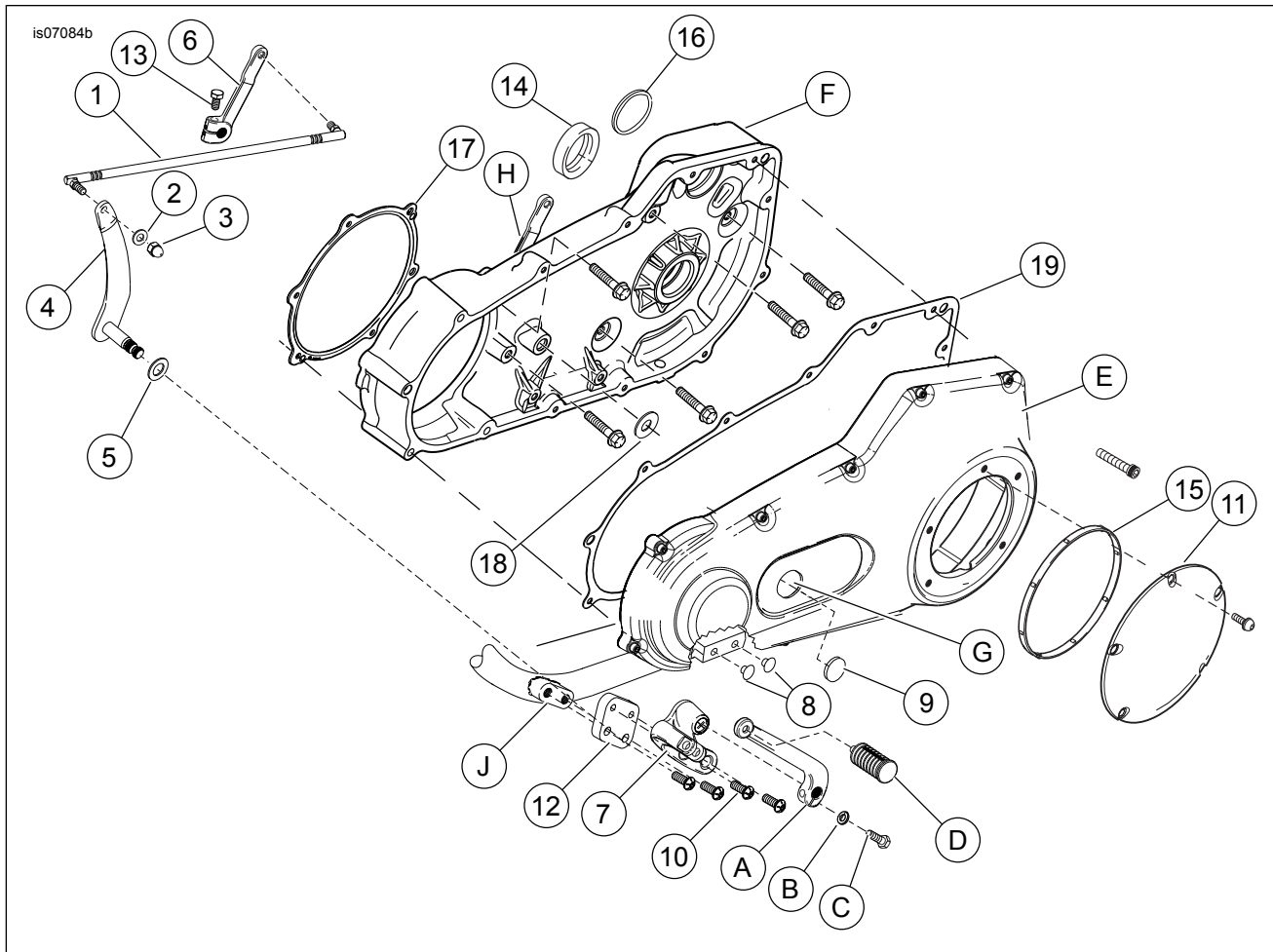


Figure 4. Service Parts: Reduced Reach Forward Foot Control Kit

Table 1. Service Parts Table

| Item   | Description (Quantity)                            | Part Number         |
|--|---|---------------------|
| 1  | Shifter rod, chrome                               | 34887-06            |
|  | Shifter rod, black                                | 33737-09            |
| 2  | Washer, 5/16 x 11/16 x 1/16 in. zinc (Chrome kit) | 6702                |
|  | Washer, 5/16 x 11/16 x 1/16 in. black (Black kit) | 6929                |
| 3  | Acorn nut, 5/16-24 locknut, chrome                | 7736                |
|  | Acorn nut, 5/16-24 locknut, black                 | 8196                |
| 4  | Shifter shaft and lever, chrome                   | 33789-06            |
|  | Shifter shaft and lever, black                    | 33733-09            |
| 5  | Spring washer                                     | 34625-90            |
| 6  | Transmission shifter lever, chrome                | 33883-06            |
|  | Transmission shifter lever, black                 | 33735-09            |
| 7  | Shifter bracket, chrome                           | 33695-03            |
|  | Shifter bracket, black                            | 33649-09            |
| 8  | Hole plug (4)                                     | 740                 |
| 9  | Primary hole plug, chrome                         | 90357-89            |
|  | Primary hole plug, black                          | 6943                |
| 10   | Torx screw, 3/8-16 x 1.0 in. (6)                  | 4059                |
| 11   | Sealing fasteners (5)                             | 786A                |
| 12   | Plate, reduced reach, left                        | Not sold separately |
| 13   | Bolt  | 856A                |
| 14   | Oil seal  | 12052A              |
| 15   | Gasket, clutch cover                              | 25418-06            |
| 16   | Gasket, starter                                   | 27444-00Y           |
| 17   | Gasket, inner primary                             | 34934-06            |
| 18   | Gasket  | 63869-06            |
| 19   | Gasket, outer primary                             | 60547-06            |
| A*   | Shifter lever, black                              | 34501-09            |
| <b>Items mentioned in text, but not included in kit:</b> |   |                     |
| A  | Shifter lever                                     |                     |
| B  | Washer  |                     |

Table 1. Service Parts Table

| Item                                   | Description (Quantity)           | Part Number |
|--|----------------------------------|-------------|
| C                                      | Pinch bolt                       |             |
| D                                      | Shifter peg                      |             |
| E                                      | Primary chaincase cover          |             |
| F                                      | Primary chaincase housing        |             |
| G                                      | Primary cover hole               |             |
| H                                      | Transmission shifter lever (old) |             |
| J                                      | Forward control frame mount      |             |
| Included in kit part no. 50700007 only |                                  |             |

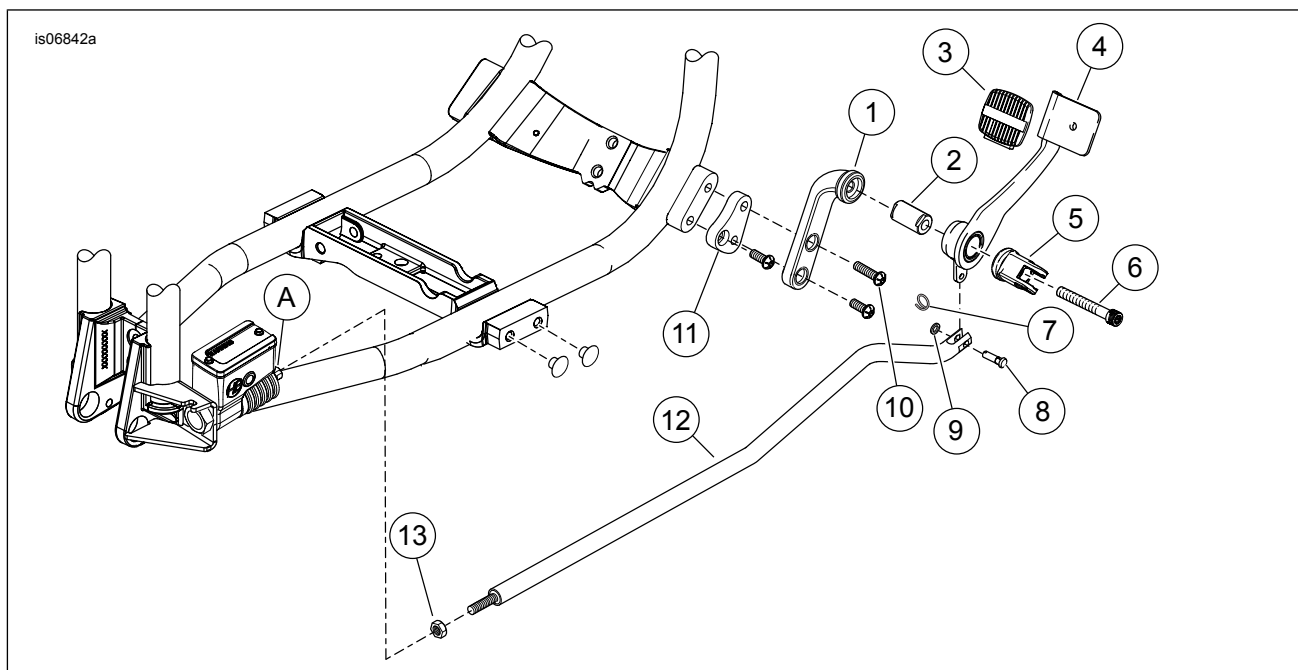


Figure 5. Service Parts: Reduced Reach Forward Controls Kit

Table 2. Service Parts Table

| Item   | Description (Quantity)         | Part Number         |
|--|--------------------------------|---------------------|
| 1  | Brake pedal bracket, chrome    | 33697-03A           |
|  | Brake pedal bracket, black     | 33682-09            |
| 2  | Brake pedal pivot shaft        | Not sold separately |
| 3  | Brake pedal pad                | 42532-06            |
| 4  | Brake pedal, chrome            | 42542-03            |
|  | Brake pedal, black             | 42556-09            |
| 5  | Footrest mount clevis, chrome  | 42664-03A           |
|  | Footrest mount clevis, black   | 42703-09            |
| 6  | Torx screw, 3/8-16 x 2-3/4 in. | 4339A               |
| 7  | Cotter circle                  | 51938-04            |
| 8  | Clevis pin                     | 42460-80B           |
| 9  | Washer, 1/4 x 7/16 x 1/16 in.  | 6099                |
| 10   | Torx screw, 3/8-16 x 1-1/2 in. | Not sold separately |
| 11   | Plate, reduced reach, right    | Not sold separately |
| 12   | Brake rod                      | Not sold separately |
| 13   | Jam nut, 5/16-24               | 7744                |
| <b>Items mentioned in text, but not included in kit:</b> |                                |                     |
| A  | Master cylinder push rod       | Reference only      |