



INSTRUCTIONS

-J04305

REV. 2007-01-15

CRESTED BAR AND SHIELD PASSENGER FOOTBOARD KIT

GENERAL

Kit Number

50377-07

Models

For model fitment information, please see the P&A Retail Catalog or the Parts and Accessories section of www.harley-davidson.com (English only).

WARNING

The rider's safety depends upon the correct installation of this kit. If the procedure is not within your capabilities or you do not have the correct tools, have a Harley-Davidson dealer perform the installation. Improper installation of this kit could result in death or serious injury. (00308a)

Kit Contents

See Figure 2 and Table 1.

REMOVAL

1. See Figure 1. Remove existing passenger footpegs and mounting hardware.
2. Remove chrome swingarm pivot covers, if equipped.
3. Do not remove tool boxes, if equipped.

INSTALLATION

NOTES

To prevent damage to chrome surfaces, avoid contact with abrasive materials (stones, sand, etc.).

Some paint removal from counterbore holes of footboard brackets may be necessary to ease the installation of the pivot pins.

Install Left Footboard Mount and Bracket

1. See Figure 2. Position left footboard mount (1) and insert screw (2) through mount and into footpeg mounting hole.
2. Position semi-circular cutout in mount extending from side of mount around nut of swingarm pivot bolt. Tighten screw (2) to 35-45 ft-lbs (47-61 Nm).
3. Position left footboard bracket (3) on mounting stud so that bolt hole aligns with machined groove in stud.

4. Insert screw (4) through left side in split hub of footboard bracket. Thread into tapped hole (right side) of split hub. Tighten to 10 ft-lbs (13.6 Nm).

Install Right Footboard Bracket

1. See Figure 2. Position right footboard bracket (5) onto muffler support bracket.
2. Secure footboard bracket with screw (6). Tighten to 35-45 ft-lbs (47-61 Nm).

Install Left and Right Footboards

NOTE

The footboards are side specific. Install footboards with Bar and Shield logo toward the front.

1. See Figure 2. Place footboard pad (7, 8) on footboard bottom (9, 10) and thread the pivot pins (11, 12).
2. Tighten pivot pins to 60-68 in-lbs (6.8-9.0 Nm).
3. Place spring (13) into retaining hole in footboard bracket (3, 5). Rest Delrin® ball (14) on top of spring.
4. Position footboard bottom (9, 10) onto footboard bracket in the down position while being careful not to unseat the ball.
5. Tighten pivot pins to 12-15 ft-lbs (16.3-20 Nm).
6. Press down on footboard assembly so holes align.
7. Insert mounting pins (15) in footboard bottom (9, 10) into corresponding holes in footboard pad (7, 8).

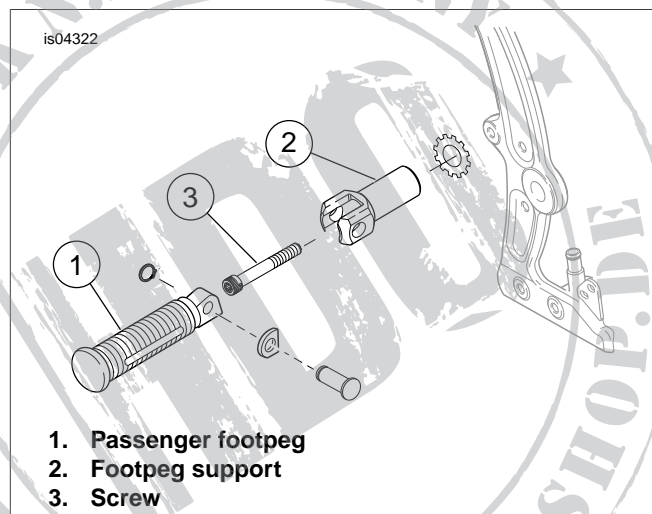


Figure 1. Passenger Footpeg Components

SERVICE PARTS

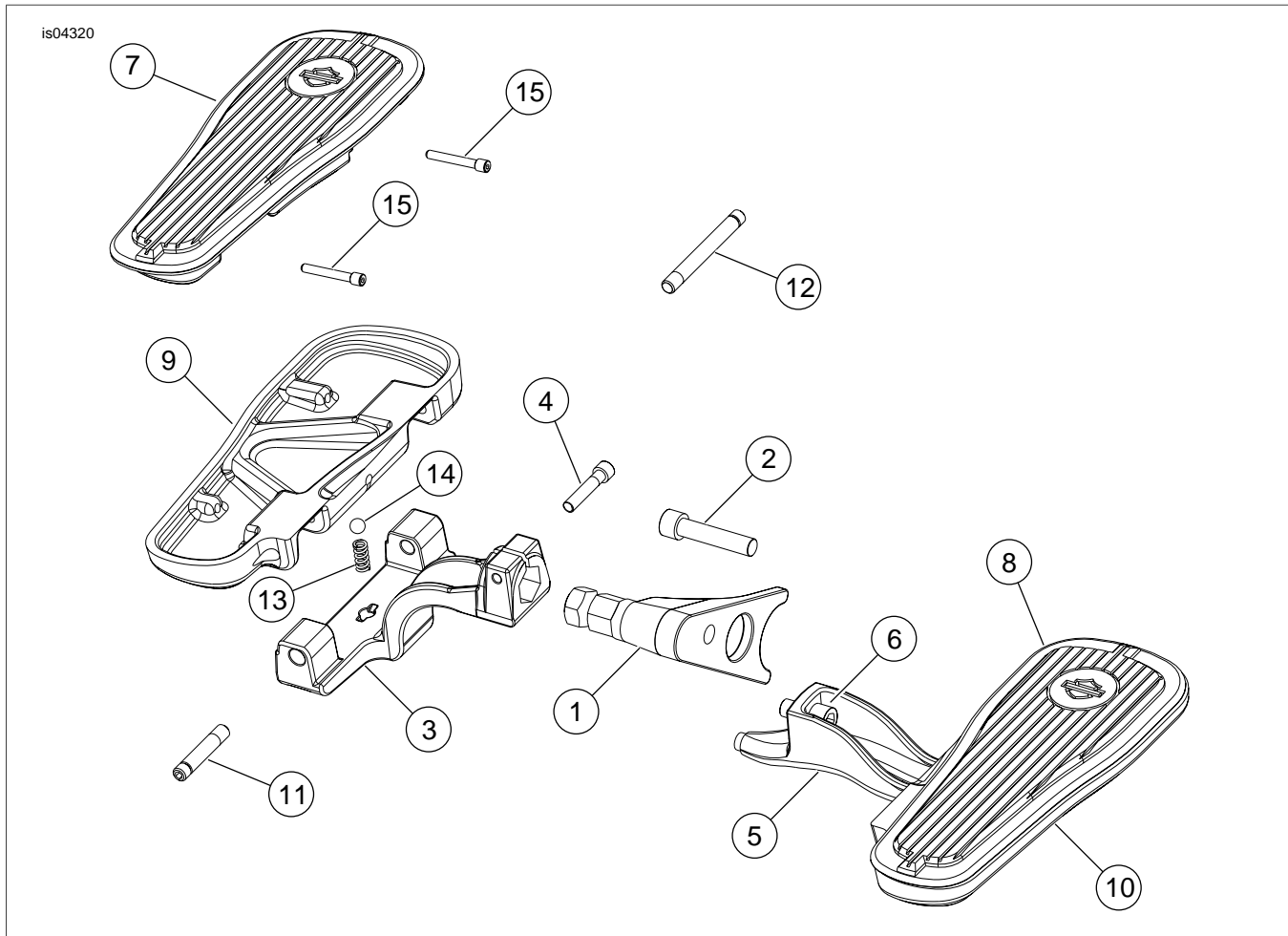


Figure 2. Service Parts: Crested Bar and Shield Passenger Footboard and Mount Kit

Table 1. Service Parts Table

Item	Description (Quantity)	Part Number
1	Mount, left footboard	50483-00
2	Screw, socket head cap	4310
3	Bracket, left footboard	52713-95A
4	Screw, socket head cap	3601
5	Bracket, right footboard	50403-07
6	Screw, socket head cap	2917
7	Footboard pad, left	50391-05
8	Footboard pad, right	50390-05
9	Footboard bottom, left	50398-05
10	Footboard bottom, right	50397-05
11	Pivot pin, short (2)	42719-05
12	Pivot pin, long (2)	Not Sold Separately
13	Spring (2)	33085-74
14	Ball, Delrin® (2)	8861
15	Pin, mounting (4)	Not Sold Separately