



## ENGINE GUARD MOUNT DRIVING LIGHTS

# 5019

### PARTS INCLUDED

- 2 Driving Lights with Pivot Mount
- 2 Engine Guard Clamp Assemblies Including:
  - 2 Clamp Caps-Installed on Clamp
  - 2 3/8"-16 Nylock Hex Nuts-**Under Clamp Cap**
  - 4 #10-24 X 1/2" Socket head Cap Screws
- 1 Wiring Kit Containing:
  - 6 Female Scotch Locks
  - 6 Male Scotch Locks
  - 4 Bullet Connectors
  - 4 Male Bullet Connectors
  - 1 Pin Terminal Connector
  - 1 Contact Receptacle
  - 10 6" Black Cable Ties
  - 2 Dielectric Grease Packs
- 1 Installation Instructions

Please read and understand entire instructions before starting installation.

### THANK YOU FOR CHOOSING KÜRYAKYN!

**IN ORDER TO PROTECT YOU AND OTHERS FROM POSSIBLE INJURY AND/OR PROPERTY DAMAGE OR LOSS, PLEASE PAY CLOSE ATTENTION TO ALL INSTRUCTIONS, WARNINGS, CAUTIONS AND NOTICES REGARDING THE USE AND CARE OF THIS PRODUCT.**

|                |  |
|----------------|--|
| <b>WARNING</b> | <b>THIS INDICATION ALERTS YOU TO THE FACT THAT IGNORING THE CONTENTS DESCRIBED HEREIN CAN RESULT IN POTENTIAL DEATH OR SERIOUS INJURY.</b>             |
| <b>NOTICE</b>  | <b>This indication alerts you to the fact that ignoring the contents described herein may negatively affect product performance and functionality.</b> |
| <b>CAUTION</b> | <b>This indication alerts you to the fact that ignoring the contents described herein can result in potential injury.</b>                              |

|               |   |
|---------------|---|
| <b>NOTICE</b> | <b>IF INSTALLING THIS PRODUCT FOR ANOTHER PARTY, PLEASE MAKE SURE THEY RECEIVE THIS COPY OF THE INSTALLATION INSTRUCTIONS SO THEY ARE AWARE OF THE IMPORTANT INFORMATION CONTAINED IN THEM.</b> |
|---------------|---|

### TOOLS SUGGESTED

Set of Hex and Torx Wrenches, Wire Strippers/Crimpers, Test Light, Phillips Screwdriver

**STRICTLY OBSERVE THE FOLLOWING GUIDELINES IN ORDER TO USE THE PRODUCT PROPERLY AND AVOID POTENTIALLY DANGEROUS ACCIDENTS.**

**STEP 1** Read and understand all steps in the instructions before starting the installation. Park the motorcycle on a hard, level surface and turn off the ignition. Let cool.

### CUSTOMER SERVICE

877.370.3604 (toll free)

### INSTALLATION QUESTIONS

techsupport@kuryakyn.com  
or call 715.247.2983

### LIMITED WARRANTY

Kuryakyn warrants that any Kuryakyn products sold hereunder, shall be free of defects in materials and workmanship for a period of one (1) year from the date of purchase by the consumer excepting the following provisions:

- Kuryakyn shall have no obligation in the event the customer is unable to provide a receipt showing the date the customer purchased the product(s).
  - The product must be properly installed, maintained and operated under normal conditions.
  - Kuryakyn makes no warranty, expressed or implied, with respect to any gold plated products.
  - Kuryakyn shall not be liable for any consequential and incidental damages, including labor and paint, resulting from failure of a Kuryakyn product, failure to deliver, delay in delivery, delivery in nonconforming condition, or for any breach of contract or duty between Kuryakyn and a customer.

• Kuryakyn products are often intended for use in specific applications. Kuryakyn makes no warranty if a Kuryakyn product is used in applications other than intended.

• Kuryakyn electrical products are warranted for one (1) year from the date of purchase by the consumer. L.E.D.'S contained in components of Kuryakyn products will be warranted for defects in materials and workmanship for 3 years from the date of purchase where as all other components shall be warranted for one(1) year. This includes, but is not limited to; control modules, wiring, chrome & other components.

• Kuryakyn makes no warranty of any kind in regard to other manufacturer's products distributed by Kuryakyn. Kuryakyn will pass on all warranties made by the manufacturer and where possible, will expedite the claim on behalf of the customer, but ultimately, responsibility for disposition of the warranty claim lies with the manufacturer.

### ABOUT OUR CATALOG

For purchasing Kuryakyn® products, you can receive a complete catalog free of charge. Send the Proof-of-Purchase below with your address to: Kuryakyn, P.O. Box 339, Somerset, WI 54025. Please indicate either Accessories Catalog for Harley-Davidson® or GL & Metric Cruisers.

Be sure to ask your local dealer about other Kuryakyn® products, the motorcycle parts and accessories designed for riders by riders.

©2005 Kuryakyn USA® All Rights reserved.



**NOTE:** Kuryakyn recommends using one of our Driving Light and Switch/Relay Harnesses, P/N 2202 or P/N 2328, to power the lights to prevent overloading a circuit on the bike. We have included instructions to on how to connect these lights to an unused Accessory switch on Electra Glide and Street Glide models or you may install the black power wires from the driving lights using the female t-tap connectors and connect them to a "keyed" power source. The lights draw approximately 6 amps. **Before connecting the power wires to a circuit check to make sure that the circuit can handle the additional load.**

**WARNING** YOU WILL BE WORKING AROUND THE ENGINE AND EXHAUST SYSTEM DURING INSTALLATION. ENSURE THAT THE ENGINE AND EXHAUST SYSTEM HAVE FULLY COOLED TO PREVENT INJURY.

**WARNING** IT IS THE INSTALLERS RESPONSIBILITY TO ENSURE THAT THE INSTALLATION OF THIS ACCESSORY DOES NOT EXCEED THE MAXIMUM AMPERAGE OF THE CHOSEN CIRCUIT. EXCEEDING THE MAXIMUM ALLOWABLE AMPERAGE MAY LEAD TO CIRCUIT FAILURE WHICH COULD RESULT IN SERIOUS INJURY OR DEATH.

**WARNING** A FACTORY SERVICE MANUAL WILL BE HELPFUL IN PERFORMING THIS INSTALLATION. DO NOT ATTEMPT TO PERFORM THIS INSTALLATION IF YOU ARE NOT CONFIDENT IN YOUR ABILITY TO COMPLETE ALL OF THE STEPS IN THE PROCEDURE; CONSULT A TRAINED TECHNICIAN. IMPROPER INSTALLATION COULD RESULT IN SERIOUS INJURY OR DEATH.

**STEP 2** Remove the two #10-24 X 1/2" socket head cap screws from each clamp.

**STEP 3** Looking into the wire exit location in either side of the rear clamp half, find the tab of the clamp cap. PIC 1 Insert a small screwdriver or pick tool in the hole and gently pry up. PIC 2 (**DO NOT** try to pry up from the outside edge of the clamp cap, you will damage it.) This will push the tab up and release the cover for access to the hex nut.

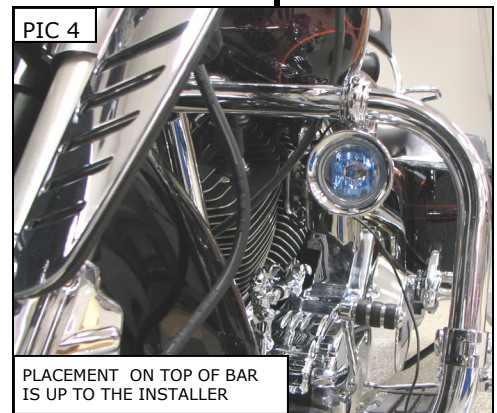
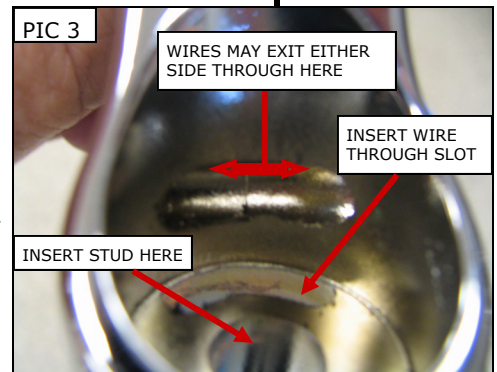
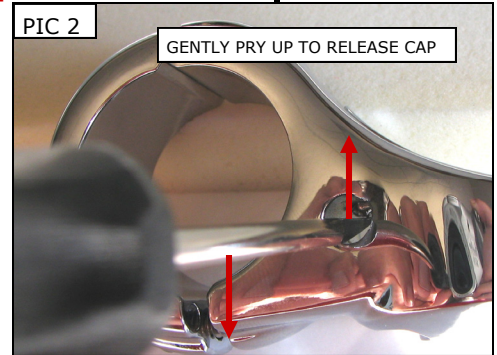
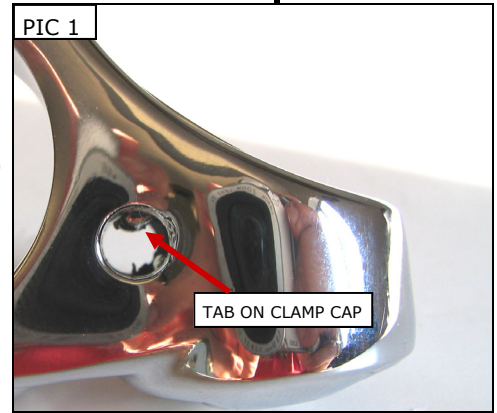
**STEP 4** Determine which side of the clamp you would like the power wire to exit from and route the wire through the clamp. PIC 3

**STEP 5** Place the driving light stud through the mounting clamp and secure it with the provided 3/8"-16 Nylock Hex Nut. Leave finger tight for now.

**STEP 6** The placement of the Driving Lights on top of the engine guard is up to the installer for best lighting pattern. PIC 4 Mount the driving light to the engine guard in the desired location. Make sure the pins on the back clamp go into the holes on the front clamp. PIC 5 Tighten securely. Install the clamp caps in the clamps. PIC 6

**NOTE:** If you need to remove the clamp caps once installed, repeat Step 3. Insert the tool in the open side opposite the wire, to gently pry up on the lock tab.

**NOTICE** Secure all wiring from the newly installed and/or from existing parts, away from any moving parts, pinch points or extreme heat. Kuryakyn WILL NOT issue a warranty on any electrical component that fails due to pinched, crimped, broken, abraded, melted or frayed wires.



**STEP 7** Repeat assembly on the opposite side of the engine guard. Make sure wire is not pinched and can move freely. PIC 6

**WARNING** TURN THE FORK LOCK TO LOCK TO CHECK FOR CLEARANCE BETWEEN THE LIGHTS AND ANY OTHER COMPONENT ON THE MOTORCYCLE. INSUFFICIENT CLEARANCE MAY CAUSE LOSS OF CONTROL RESULTING IN SERIOUS INJURY OR DEATH.

**CAUTION** Avoid potential electrical shock! Disconnect the battery before starting this procedure.

**FOR '97 and LATER ELECTRA GLIDE AND STREET GLIDE MODELS, ALL OTHER MODELS PROCEED TO STEP 17**

**STEP 8** Remove the outer fairing and windscreen as outlined in the service manual for your bike. Remove the seat and disconnect the battery.

**STEP 9** Locate the black wiring connector that has the accessory wires in it. This is usually located on the throttle side of the inner fairing. PIC 7

**STEP 10** Using the ORANGE wire that is second in from the end (#2 pin terminal), install one of the included Female T-Tap connectors to this wire. PIC 8

**STEP 11** Take the end of one of the BLACK power wires from one of the Driving Lights and crimp on one of the included Male Spade connectors. Connect this wire to the Female T-Tap installed on the ORANGE wire in STEP 10. PIC 9-Page 4 This wire is powered when the Accessory switch is turned on.

**NOTICE** Kuryakyn recommends the use of dielectric grease on electrical connections.

**STEP 12** Install one of the included Female T-Tap connectors to the BLACK power wire, from STEP 11, approximately two inches from the connection into the Female T-Tap on the ORANGE wire from STEP 11. This will be the power for the other light.

**STEP 13** Crimp a Male Spade connector to the end of the other Driving Light BLACK power wire. Connect this to the Female T-Tap installed in STEP 12.

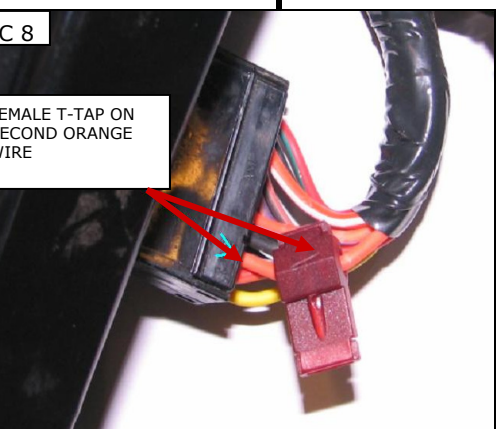
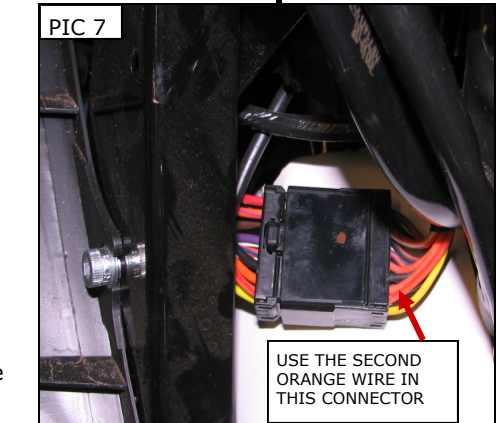
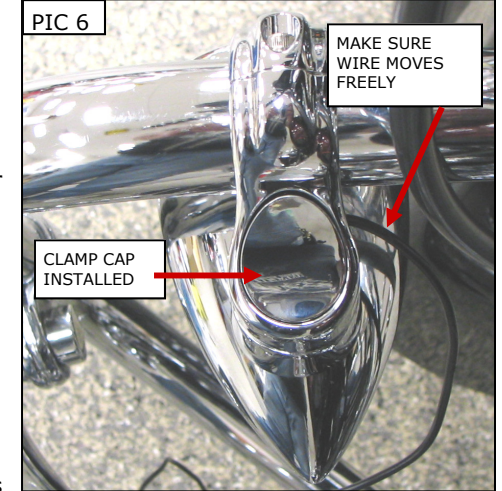
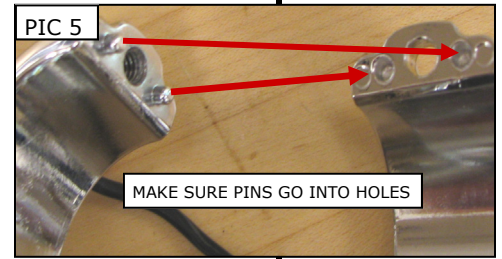
**STEP 14** Once all connections are connected, reconnect the battery, turn the key to the "ON" position and check to ensure the lights work properly.

**WARNING** ENSURE PROPER LIGHT OPERATION BEFORE RIDING THE MOTORCYCLE. VISIBILITY IS A MAJOR CONCERN FOR MOTORCYCLISTS. A LIGHTING MALFUNCTION COULD RESULT IN DEATH OR SERIOUS INJURY.

**STEP 15** If lights do not work, go over the wire connections and check all plugs to see if they are plugged-in correctly. You may also have to use a test light again to check if the spade/T-Tap connectors are in the proper locations.

**STEP 16** Reinstall the outer fairing and windscreen as per the service manual. Replace the seat.

**WARNING** AFTER INSTALLING THE SEAT, PULL UP ON IT TO ENSURE IT IS LOCKED INTO PLACE. A LOOSE SEAT CAN SHIFT AND CAUSE LOSS OF CONTROL RESULTING IN SERIOUS INJURY OR DEATH.



-cont.-

**NOTICE**

It is the installer's responsibility to ensure that all of the fasteners (including pre-assembled) are tightened before operation of the motorcycle. Kuryakyn will not provide warranty coverage on products or components lost due to improper installation or lack of maintenance. Periodic inspection and maintenance are required on all fasteners.

**FOR UNIVERSAL WIRING ON OTHER MODELS**

**STEP 17**

Using a test light or wiring schematic, with the key in the "ON" position, locate a "keyed" (has power with the key "ON", loses power with the key "OFF") 12-volt power wire to power the driving lights. Once you have located a keyed 12-volt power source, turn the key to the "OFF" position and disconnect the battery.



**Avoid potential electrical shock! Disconnect the battery before starting this procedure.**

**NOTICE**

Kuryakyn recommends the use of dielectric grease on electrical connections.

**STEP 18**

Once you have located a keyed 12-volt power source, take the two female T-Tap connectors and place them on the desired power wire. PIC 10

**STEP 19**

Take the black power wires and cut them to desired length, strip the ends and place a male Spade Connector on it and crimp. PIC 11

**STEP 20**

Place a small amount of dielectric grease on the female T-Tap connectors and insert the male spade connectors the female T-Tap connectors installed on the keyed power wire. These driving lights are self-grounding so you will not need to hook up any negative leads.

**STEP 21**

Once all connections are connected, turn the key to the "ON" position and check to ensure the lights work properly.



**ENSURE PROPER LIGHT OPERATION BEFORE RIDING THE MOTORCYCLE. VISIBILITY IS A MAJOR CONCERN FOR MOTORCYCLISTS. A LIGHTING MALFUNCTION COULD RESULT IN DEATH OR SERIOUS INJURY.**

**STEP 22**

If lights do not work, go over the wire connections and check all plugs to see if they are plugged-in correctly. You may also have to use a test light again check if the spade/T-Tap connectors are in the proper locations.

**STEP 23**

When you are satisfied with all the wiring, you can use the supplied cable ties and secure the wires out of harms way.

**NOTICE**

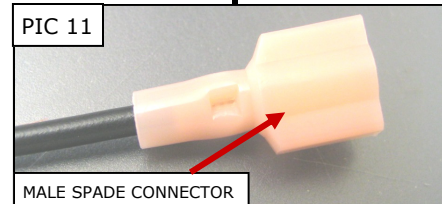
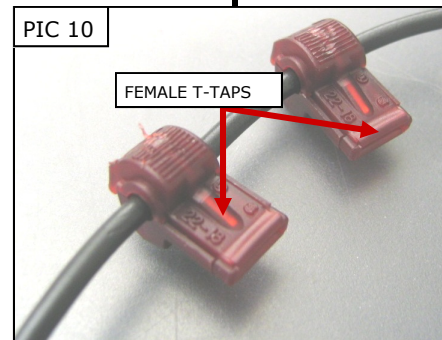
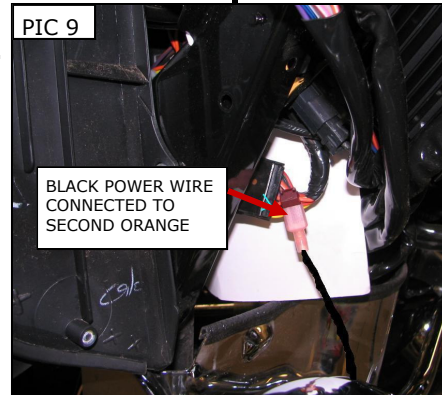
Secure all wiring from the newly installed and/or from existing parts, away from any moving parts, pinch points or extreme heat. Kuryakyn WILL NOT issue a warranty on any electrical component that fails due to pinched, crimped, broken, abraded, melted or frayed wires.

**STEP 24**

To aim the driving lights simply loosen the bottom 3/8"-16 Nylon Chrome Nut and point to the desired location. Retighten the 3/8"-16 Nylock Chrome Nut and repeat the same process for the opposite side.



**IT IS THE INSTALLERS RESPONSIBILITY TO ADJUST THE NEW DRIVING LIGHTS TO THE PATTERN RECOMMENDED IN THE SERVICE MANUAL FOR THE HEADLIGHT LOW BEAM. FAILURE TO PROPERLY ADJUST THE LIGHT PATTERN MAY DISTRACT ONCOMING DRIVERS RESULTING IN SERIOUS INJURY OR DEATH.**



**NOTICE**

It is the installer's responsibility to ensure that all of the fasteners (including pre-assembled) are tightened before operation of the motorcycle. Küryakyn will not provide warranty coverage on products or components lost due to improper installation or lack of maintenance. Periodic inspection and maintenance are required on all fasteners.

**REPLACING THE LIGHT BULB**

**STEP 1** As shown in PIC 12, remove the Button Head Cap Screw located at the bottom of the light housing.

**STEP 2** Remove the light bezel by twisting the bezel counter clockwise and pulling the bezel outward.

**STEP 3** Remove the rubber inner seal from the chrome light housing. The glass light housing should now be free.

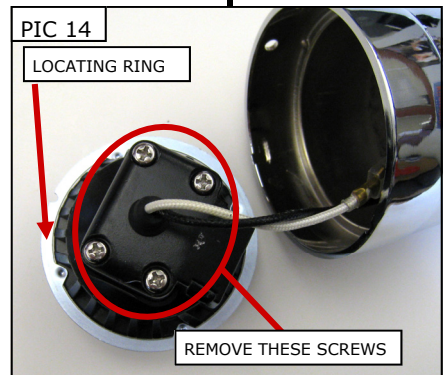
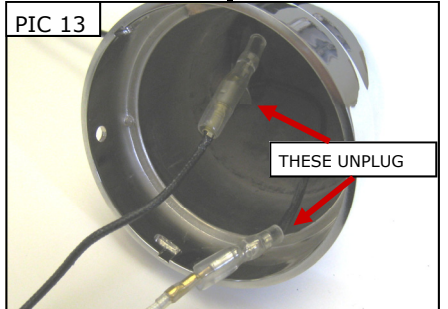
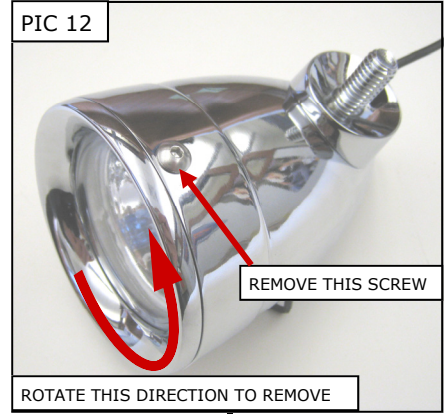
**NOTE:** Please note the orientation of the locating ring. This will greatly help when reassembling the lights. PIC 14.

**STEP 4** Pull the glass housing out away from the chrome housing and disconnect the wires. PIC 13

**STEP 5** As shown in PIC 14, remove the 4 screws to gain access to the light bulb. Pull the light bulb from the mount with the white wire attached.

**STEP 6** Take the new light and insert the white wire through the mount from the front side. (The wire should fit through the rubber boot on the backside of the mount). **Do not handle the glass portion of the new bulb with your bare hands. Oil from your fingers will stay on the bulb and create a hot spot, shortening the life of the bulb. If you do touch the bulb, clean it with an ammonia based cleaner, such as window cleaner or with alcohol before installation.**

**STEP 7** Reassemble the glass housing and the chrome housing in the reverse order they were disassembled.



**NOTICE**

It is the installer's responsibility to ensure that all of the fasteners (including pre-assembled) are tightened before operation of the motorcycle. Küryakyn will not provide warranty coverage on products or components lost due to improper installation or lack of maintenance. Periodic inspection and maintenance are required on all fasteners.