



INSTRUCTIONS

-J04738

REV. 2009-03-16

HEEL RAISER FOOTPEG KIT

GENERAL

Kit Number

50178-09

Models

For model fitment information, see the P&A Retail Catalog or the Parts and Accessories section of www.harley-davidson.com (English only).

Kit Contents

See Figure 3 and Table 1.

WARNING

The rider's safety depends upon the correct installation of this kit. If the procedure is not within your capabilities or you do not have the correct tools, have a Harley-Davidson dealer perform the installation. Improper installation of this kit could result in death or serious injury. (00308a)

INSTALLATION

1. Remove the locknuts and screws that hold the existing footpegs in place. If the motorcycle is equipped with a pin and retaining ring, remove them and retain for future use. Save all hardware for installation of the new footpegs.
2. Remove the existing footpegs and the spring washers. Save the spring washers for installation.

NOTE

See Figure 1. When performing the next step, verify that the spring washer is positioned inside of the footpeg support with the square edge (2) towards the inside of the support.

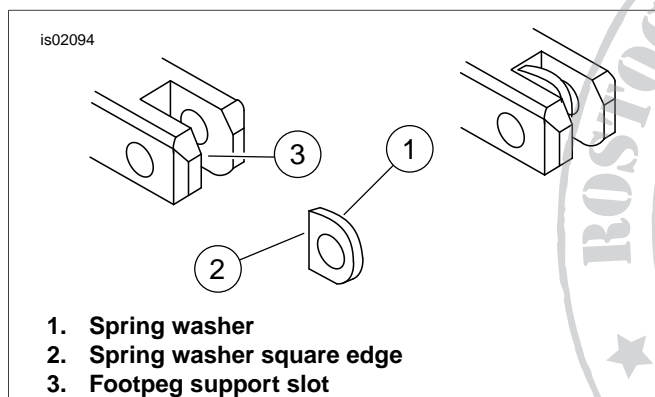


Figure 1. Footpeg Spring Washer Installation

3. See Figure 1. Install the new footpegs in the same manner as the old footpegs were installed. Insert a spring washer (1) and the mount end of the footpeg inside the slots (3) of the footpeg supports.

4. Secure each footpeg and spring washer to the footpeg support with the screw and locknuts or pin and retaining rings removed earlier. Tighten the locknuts to 19 ft-lb (26 Nm).

WARNING

Footrests must fold up and toward rear of motorcycle if struck. Failure to set footrests to fold up and back could result in death or serious injury. (00366a)

WARNING

Position footpegs so rider can operate foot controls without interference. Failure to have full access to foot controls can cause loss of control, which could result in death or serious injury. (00313a)

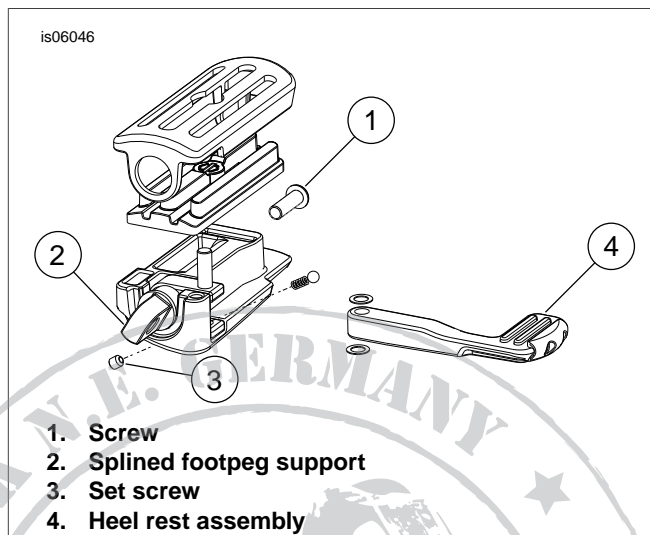
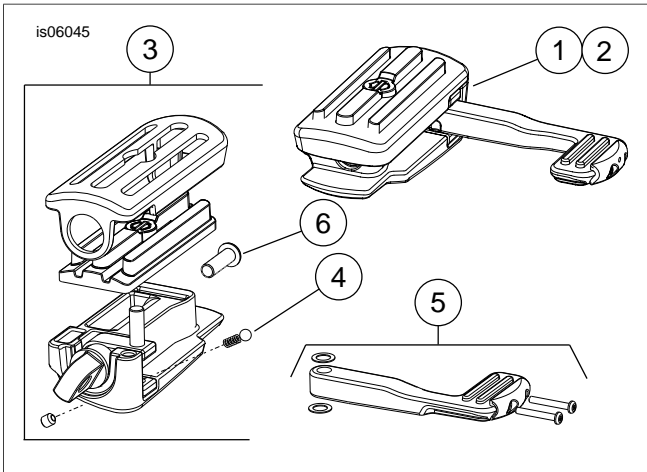


Figure 2. Footpeg Adjustments

5. See Figure 2. To adjust angle of footpeg and heel rest remove screw (1) from end of footpeg. Pull splined footpeg out to disengage the splined support and rotate to desired location and push footpeg back in to re-engage splined support.
6. Tighten screw (1) to 21 ft-lb (28.5 Nm).
7. The tension on heel rest can be adjusted by tightening or loosening the set screw (3) on opposite side of the heel rest.

SERVICE PARTS

Table 1. Service Parts Table



Item	Description (Quantity)	Part Number
1	Footpeg with heel rest, right	Not Sold Separately
2	Footpeg with heel rest, left	Not Sold Separately
3	Footpeg assembly	Not Sold Separately
4	Ball, detent	8819
5	Heel rest assembly	Not Sold Separately

Figure 3. Service Parts: Heel Raiser Footpeg Kit

