



INSTRUCTIONS

-J03494

REV. 2005-03-14

DYNA CHROME PASSENGER FOOTPEG MOUNTS

GENERAL

Kit Number

49249-06

Models

This kit fits all 2006 and later Dyna model motorcycles.

Additional Parts Required

FXDI and FXDBI models require the separate purchase of a footpeg kit, hex cap screw, hex lock nut, spring clip and two self tapping screws. The two self tapping screws will be used to secure the right side passenger footpeg support. Contact a Harley-Davidson dealer for additional information.

WARNING

The rider's safety depends upon the correct installation of this kit. If the procedure is not within your capabilities or you do not have the correct tools, have a Harley-Davidson dealer perform the installation. Improper installation of this kit could result in death or serious injury. (00308a)

NOTE

A Service Manual for your model motorcycle is available from a Harley-Davidson Dealer.

Kit Contents

See Figure 1 and Table 1.

INSTALLATION

1. Remove the front belt guard button head screw and washer. Retain for future use.
2. Loosen the rear belt guard button head screw. Rotate belt guard up and away from front position.

NOTE

If your model motorcycle is not equipped with passenger footpegs, proceed to step 3. If your model motorcycle is equipped with passenger footpegs, proceed to step 4.

3. Remove beltguard mounting bracket and retain screws for future use. Remove rubber plugs from right side passenger footpeg support mounting holes.
4. On the left side of motorcycle, remove screw, nut, spring washer and rubber footpeg from footpeg support. Retain screw, nut, spring washer and footpeg for future use. Repeat for right side.
5. On the left side of motorcycle, remove passenger footpeg support. Repeat for right side. Retain fasteners for future use.
6. See Figure 1. From the kit and on the left side of motorcycle, install chrome passenger footpeg support (1) using saved fasteners (3). Tighten fasteners to 25-35 ft-lbs (34-47.4 Nm). Repeat for right side chrome passenger footpeg support (2) and fasteners (3).
7. On the left side of motorcycle, install rubber footpeg, screw, spring washer and nut onto footpeg support. Tighten nut to 7-9 ft-lbs (9.5-12.2 Nm). Repeat for right side.
8. Lower belt guard into position and install screw and washer saved earlier. Tighten screw to 10-15 ft-lbs (13.5-20.3 Nm).
9. Tighten rear belt guard screw to 10-15 ft-lbs (13.5-20.3 Nm).

SERVICE PARTS

See Figure 1 and Table 1.

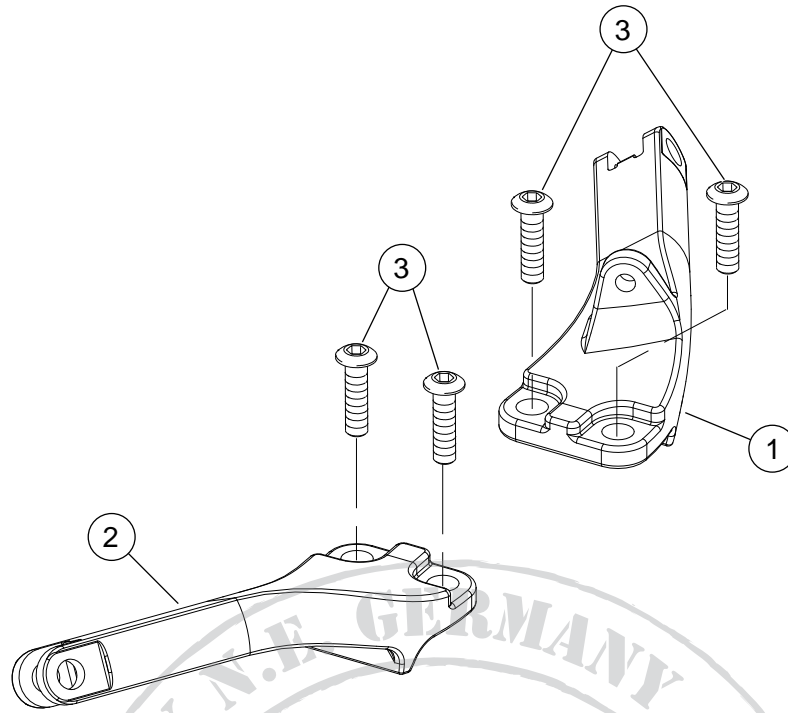


Figure 1. Passenger Support Bracket

Table 1. Service Parts Table

Item	Description (Quantity)	Part Number
1	Passenger footpeg support, left	49251-06
2	Passenger footpeg support, right	49250-06
3	Screw (4)	Reference only