



# INSTRUCTIONS

-J01530

REV. 2007-10-15

## SWINGARM AXLE COVER KITS

### GENERAL

#### Kit Number

47596-91B, 47615-95B

#### Models

For model fitment information, please see the P&A Retail Catalog or the Parts and Accessories section of [www.harley-davidson.com](http://www.harley-davidson.com) (English only).

#### Additional Parts Required

This instruction sheet references Service Manual information. A Service Manual for your model motorcycle is required for this installation and is available from a Harley-Davidson Dealer.

### WARNING

**The rider's safety depends upon the correct installation of this kit. Use the appropriate service manual procedures. If the procedure is not within your capabilities or you do not have the correct tools, have a Harley-Davidson dealer perform the installation. Improper installation of this kit could result in death or serious injury. (00333a)**

#### Kit Contents

See Figure 3 and Table 1.

### INSTALLATION

#### Install Extra Spacers for Shotgun Exhaust (If Equipped)

##### NOTE

*The rear muffler on FLSTF and FLSTN models or any Softail model equipped with a shotgun exhaust system does not need to be removed for this installation. However, additional spacers will need to be added between muffler support and rear muffler bracket to give proper clearance between muffler and cover.*

1. Loosen rear exhaust pipe at port. Remove bolt that attaches rear muffler bracket to rear muffler support.
2. Locate 5/16 in. spacers included with kit and install 5/16 in. spacers between muffler support and rear muffler bracket. Reinstall muffler support bolt. Re-tighten bolts loosened at port in Step 1.

#### Install Mounting Brackets - All Models

##### NOTE

*It is not necessary to remove rear wheel for this installation. On older models, removal of the rear muffler may be required.*

1. Remove rear muffler from right side of vehicle (except for FLSTF), if needed.

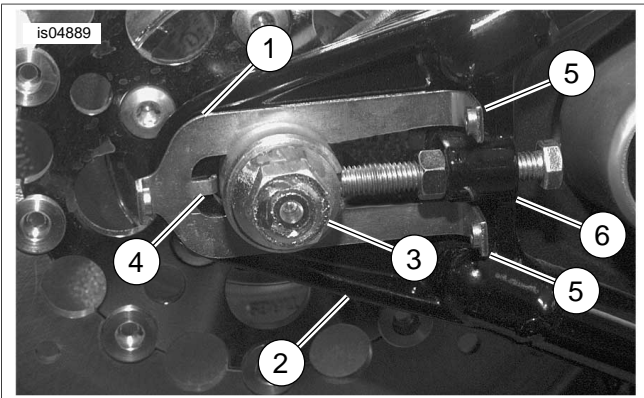
2. Block vehicle under frame so all weight is off rear wheel, and so tire is slightly raised off the floor following instructions in the appropriate Service Manual.
3. Disassemble axle assembly by removing cotter pin or spring clip, axle nut, lockwasher, washer and spacer. Discard cotter pin or spring clip. Set everything else aside for later use.
4. Slide rear axle from hub to provide sufficient clearance for mounting bracket, but do not remove rear axle or rear wheel.
5. See Figure 1. Position one mounting bracket (1) on right swingarm (2), as shown. Move bracket toward rear of swingarm so tab (4) is touching the rear edge of axle slot in swingarm. Position the front mounting tabs (5) so axle adjuster (6) is centered between them. While holding bracket in place, slide axle (3) back into position.
6. Position second mounting bracket on left side of vehicle and check that axle has been slid into place.
7. Complete axle bracket installation by reinstalling spacer, washer (for model year 2000 models replace stock washer with washer provided in kit) and lockwasher and nut removed in Step 3. Tighten axle nut to 60-65 ft-lbs (81-88 Nm). Install spring clip included with kit, if applicable.

### WARNING

**Check wheel bearing end play after tightening axle nut to specified torque. Excessive end play can adversely affect stability and handling. Insufficient end play can cause bearing seizure. Either condition can cause loss of control, which could result in death or serious injury. (00285a)**

8. Check wheel bearing end play following the instructions in the appropriate Service Manual.
9. Verify belt drive tension following the instructions in the appropriate Service Manual.





1. Mounting bracket
2. Swingarm
3. Axle
4. Tab
5. Front mounting tabs
6. Axle adjuster

**Figure 1. Install Mounting Brackets**

### Install Swingarm Axle Covers

#### NOTES

*Kit contains a right and a left cover. Shallow cover must be installed on right side of vehicle and deep cover must be installed on left side of vehicle for proper fit.*

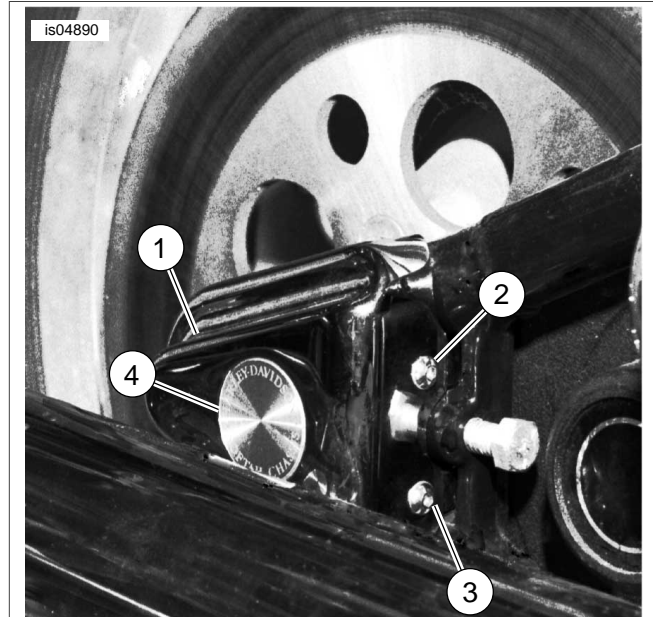
*Be careful not to scratch the black cover during installation (if applicable).*

1. See Figure 2. Place right cover (1) over mounting bracket tabs on right side of vehicle. While holding cover in place, insert one screw (2) and washer (3) included with kit into each of three holes in cover and bracket. Tighten securely with a hex wrench.
2. Repeat this procedure for left cover on left side of vehicle.

#### NOTE

*The nameplate (4) adhesive is strong. Once in place on covers, nameplates cannot be easily removed.*

3. Clean surface of cover with alcohol for maximum adhesion. Peel paper off back of nameplates (4) to expose adhesive. Position on covers (1) and press firmly into place.
4. Reinstall muffler following instructions in the appropriate Service Manual. Remove vehicle from blocks.
5. Test ride vehicle for proper operation.



1. Swingarm axle cover (right side shown)
2. Screw
3. Washer
4. Nameplate

**Figure 2. Install Swingarm Axle Cover**



## SERVICE PARTS

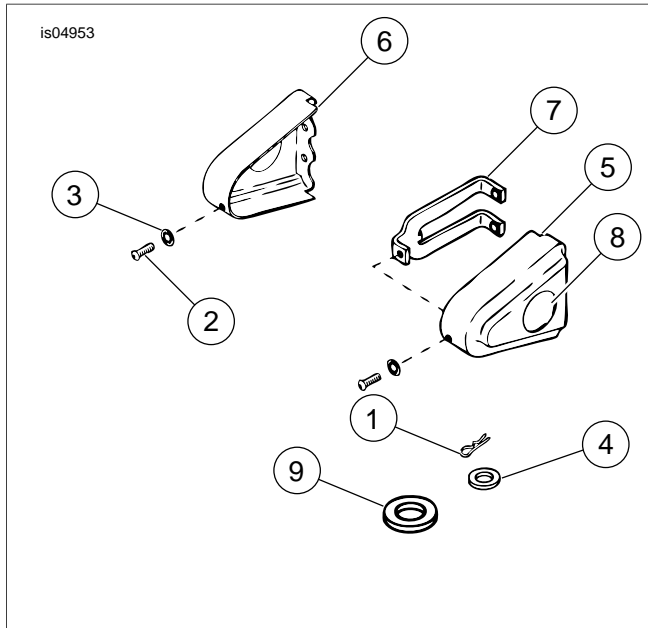


Figure 3. Service Parts: Swingarm Axle Cover Kit

Table 1. Service Parts

Item	Description (Quantity)	Part Number
1	Spring clip	510
2	Screw, hex (6)	2719
3	Washer (6)	6065
4	Washer (2)	6109
5	Cover, right chrome	47601-91
	Cover, right black	47621-95
6	Cover, left chrome	47602-91
	Cover, left black	47622-95
7	Mounting bracket (2)	47603-91B
8	Nameplate, chrome	47604-91
	Nameplate, black	47654-95
9	Washer	6653A

