



INSTRUCTIONS

-J02643

REV. 2007-11-01

BLACK ENGINE GUARD KIT

GENERAL

Kit Number

46549-03

Models

For model fitment information, please see the P&A Retail Catalog or the Parts and Accessories section of www.harley-davidson.com (English only).

Additional Parts Required

⚠ WARNING

The rider's safety depends upon the correct installation of this kit. Use the appropriate service manual procedures. If the procedure is not within your capabilities or you do not have the correct tools, have a Harley-Davidson dealer perform the installation. Improper installation of this kit could result in death or serious injury. (00333a)

NOTE

This instruction sheet references Service Manual information. A Service Manual for your model motorcycle is required for this installation and is available from a Harley-Davidson Dealer.

Kit Contents

Table 1. Kit Contents

Description (Quantity)	Part Number
Engine guard (black)	46558-03
Screw, hex socket head 5/16-18 x 1.0 inch	2708A
Washer, flat 5/16	6702
Screw, pan head TORX®, 3/18-16 x 7/8 inch (2)	3678
Locknut, flanged hex 3/8-16 (2)	7601

REMOVAL

NOTE

This Instruction Sheet covers several different Harley-Davidson models and years. Be sure to locate and follow the procedures that apply to the motorcycle receiving the new guard.

For Models without Lower Fairings

1. Proceed to **For All Models** section.

For Model FLHTCUI (Ultra Classic Electra Glide) with Factory-Installed Lower Fairings

1. Remove the lower fairings following the instructions in the appropriate Service Manual.

2. When the lower fairings have been removed, proceed to **For All Models** section.

For Models FLHR/I (Road King), FLHT (Electra Glide Standard) or FLHTC/I (Electra Glide Classic) with Harley-Davidson Genuine Motor Accessory Lower Fairings

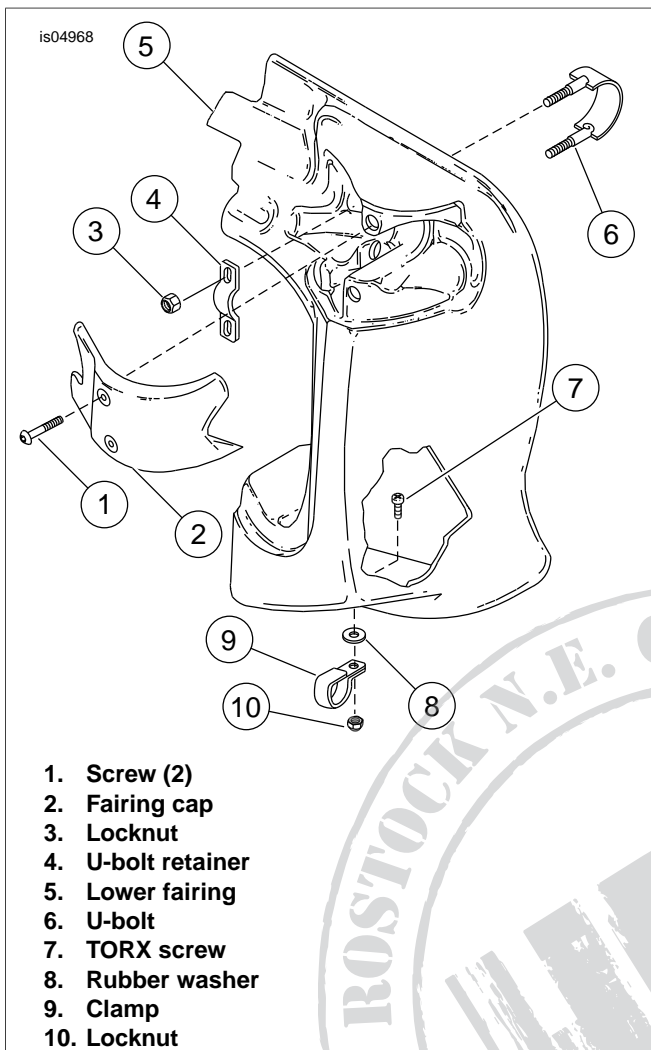
1. See Figure 1. Remove the two black screws (1) that attach the fairing cap (2) to the lower fairing (5). Remove the cap. Set the parts aside for re-installation.
2. Remove the screw (7), rubber washer (8) and locknut (10) and the clamp (9) that attaches the bottom of the lower fairing to the engine guard and set aside.
3. Remove the two locknuts (3), U-bolt (6) and U-bolt retainer (4).
4. Remove the lower fairing by sliding it out from behind the engine guard.
5. Repeat Steps 1 through 4 for the opposite side.
6. Proceed to **For All Models** section.

For Model FLTR/I (Road Glide) with Harley-Davidson Genuine Motor Accessory Lower Fairings

⚠ WARNING

Disconnect negative (-) battery cable first. If positive (+) cable should contact ground with negative (-) cable connected, the resulting sparks can cause a battery explosion, which could result in death or serious injury. (00049a)

1. Disconnect the battery, negative (-) battery cable first, following the instructions in the appropriate Service Manual.
2. Remove the seat following the instructions in the appropriate Service Manual.
3. Remove the cable strap holding the clutch cable to the engine guard.
4. See Figure 2. Remove the TORX screw (8), rubber washer (9) and locknut (11) and the clamp (10) that attaches the bottom of the lower fairing (4) to the engine guard and set aside.



1. Screw (2)
2. Fairing cap
3. Locknut
4. U-bolt retainer
5. Lower fairing
6. U-bolt
7. TORX screw
8. Rubber washer
9. Clamp
10. Locknut

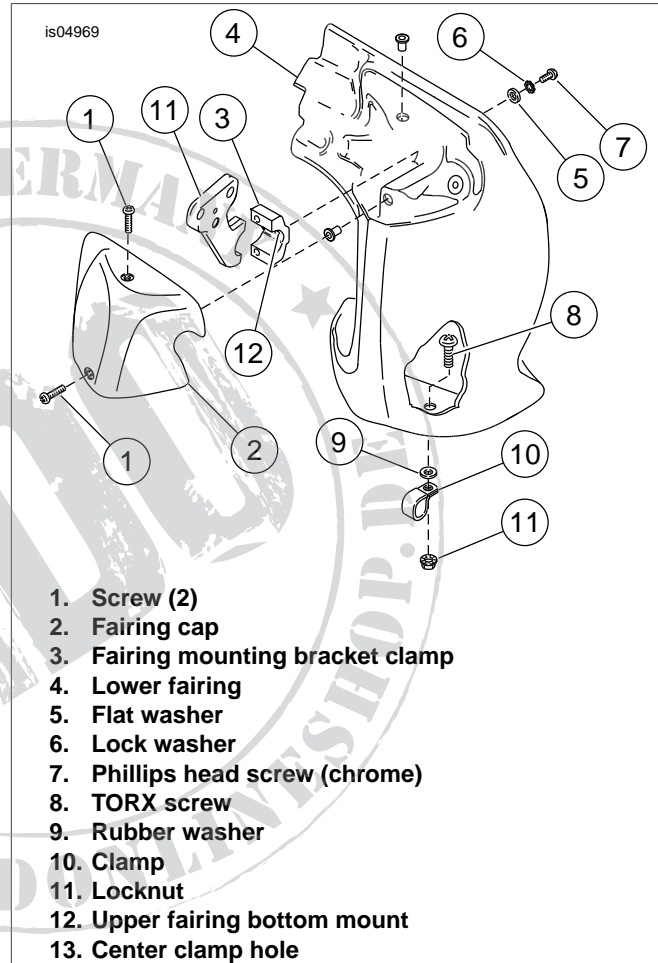
Figure 1. FLHR/I or FLHT/C/I Accessory Lower Fairing

5. Remove the two black screws (1) that attach the fairing cap (2) to the lower fairing. Remove the cap. Set the parts aside for re-installation.
6. Repeat Steps 1 through 5 for the opposite side.
7. Remove the chrome screw (7), lockwasher (6) and flat washer (5) from the clamp holding the top of the lower fairing to the bottom upper fairing mounting clamp (3).
8. Remove the large clamp (3) from the engine guard.

9. Remove the lower fairing from the motorcycle by sliding it out from behind the engine guard.
10. Repeat Steps 1 through 9 for the opposite side.
11. Proceed to **For All Models** section.

All Models

1. See Figure 3. Remove and discard the two screws (4) and locknuts (5) that attach the bottom of the stock engine guard (1) to the motorcycle frame.
2. Remove and discard the hex socket screw (2) and washer (3) holding the top of the guard. Remove the engine guard from the frame, taking care not to scratch the finish on the bike.



1. Screw (2)
2. Fairing cap
3. Fairing mounting bracket clamp
4. Lower fairing
5. Flat washer
6. Lock washer
7. Phillips head screw (chrome)
8. TORX screw
9. Rubber washer
10. Clamp
11. Locknut
12. Upper fairing bottom mount
13. Center clamp hole

Figure 2. FLTR/I Accessory Lower Fairing

INSTALLATION

1. Hold the engine guard in position, and loosely fasten the top of the guard with the new hex socket screw and flat washer from the kit.
2. Install the bottom brackets to the motorcycle frame with the two new TORX screws and locknuts.
3. Tighten all three screws to 15-20 ft-lbs (20.3-27.1 Nm).

For Model FLHTCUI (Ultra Classic Electra Glide) with Factory-Installed Lower Fairings

1. Install the lower fairings following the instructions in the appropriate Service Manual.

For Models FLHR/I (Road King), FLHT (Electra Glide Standard) or FLHTC/I (Electra Glide Classic) with Harley-Davidson Genuine Motor Accessory Lower Fairings

1. Carefully place one lower fairing in position from behind the engine guard.
2. See Figure 1. Install the lower fairing to the top of the new engine guard with the U-bolt (6) from the back, through the holes at the top of the fairing. Install the retainer (4) in position on the U-bolt and secure to the engine guard with the two locknuts (3). Do not tighten the locknuts at this time.
3. Attach the bottom of the fairing to the engine guard with the clamp (9) removed earlier. Install the clamp around the engine guard in the direction shown, with the tabs toward the rear of the vehicle and the flat side of the clamp against the rear of the fairing. Insert the screw (7) through the lower fairing, rubber washer (8) and clamp (9). Secure the assembly with the locknut (10). Tighten to 12 ft-lbs (16.3 Nm).

4. Tighten the locknuts (3) to 6 ft-lbs (8.1 Nm).
5. Attach the fairing cap (2) to the fairing with the black screws (1) removed earlier, and tighten securely.
6. Repeat Steps 1 through 5 for the opposite side of vehicle.

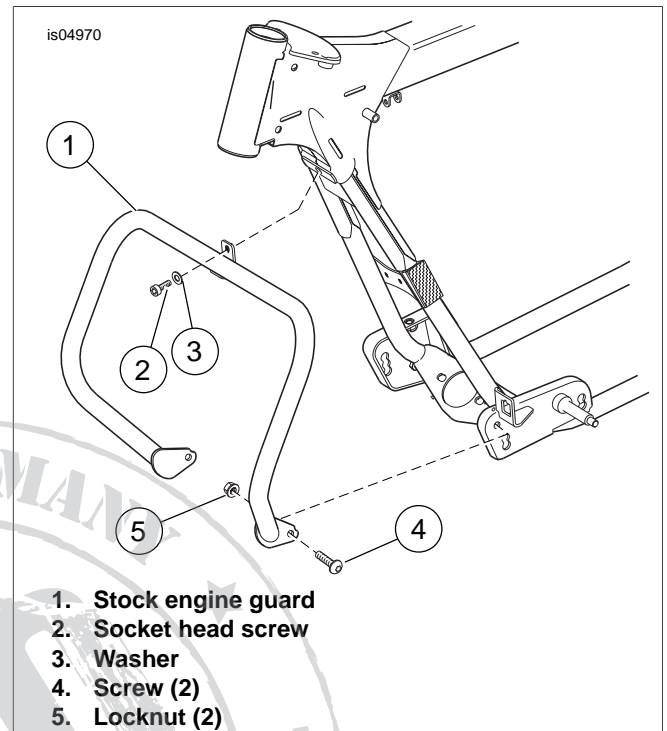


Figure 3. Install Engine Guard