



INSTRUCTIONS

-J01988

REV. 2006-04-19

FINNED HEADBOLT COVER KIT

GENERAL

Kit Number

43857-00, 43859-00, 43840-01, and 43841-01

Models

Kit Numbers 43857-00 and 43859-00 are designed to fit all 1999 and later Twin Cam 88 Model motorcycles equipped with EFI (Electronic Fuel Injection) and 2000 and later FXSTD models.

Kit Numbers 43840-01 and 43841-01 are designed to fit all 1999 to 2006 carbureted Twin Cam 88 Model motorcycles.

Kit Contents

See Figure 2 and Table 1.

INSTALLATION

NOTE

Let engine cool down completely before installing this kit.

Install Front Cover

NOTE

The front and rear head bolt covers are different. The front headbolt cover has "front" cast on the inside surface; the rear headbolt cover has "rear" cast on the inside surface.

1. Disconnect spark plug boot from front spark plug.
2. See Service Parts Illustration. Install mounts (3) to head bolts using setscrews and tighten securely with 3/32 inch hex key wrench.
3. Place the headbolt cover (1) marked "front" on the head over spark plug and mounts (installed in Step 2). Insert capscrew (4) through top of cover, align with threaded hole in top of cover mount and tighten securely with 5/32 inch hex key wrench. Repeat for remaining cover screw.

NOTE

On Dyna and Softail Models, perform Step 4 prior to installing the front spark plug boot. For all other models, proceed to Step 5.

4. Dyna and Softail Models:

- Cut and remove the plastic tie wrap retaining the front cylinder spark plug wire to the horn support bracket. (Clear the tie wrap/retainer completely out of the holes in the horn support bracket).
- See Figure 1. Install the shield onto the front cylinder spark plug wire. Route plug wire with shield under horn support

bracket, then assemble cable straps over plug wire, lacing end of cable strap through horn support bracket, but do not pull tight at this time. Position shield so it protects wire in area of horn support bracket.

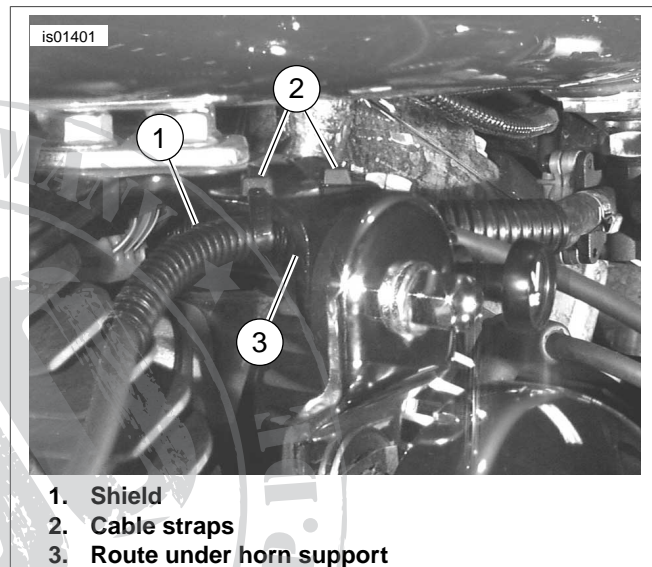


Figure 1. Conduit and front Plug Wire Routing (Dyna/Softail)

5. Connect the front spark plug wire boot to plug and align boot.
6. Pull cable straps tight and snip off excess.

Install Rear Cover

1. Disconnect spark plug boot from rear spark plug.
2. Install mounts (3) to head bolts using setscrews and tighten securely with 3/32 inch hex key wrench.
3. Place the headbolt cover (2) marked "rear" on the head over spark plug and mounts (installed in Step 2). Insert capscrew (4) through top of cover, align with threaded hole in top of cover mount and tighten securely with 5/32 inch hex key wrench. Repeat for remaining cover screw.
4. Connect the rear spark plug wire boot to the plug.

SERVICE PARTS

See Figure 2 and Table 1.

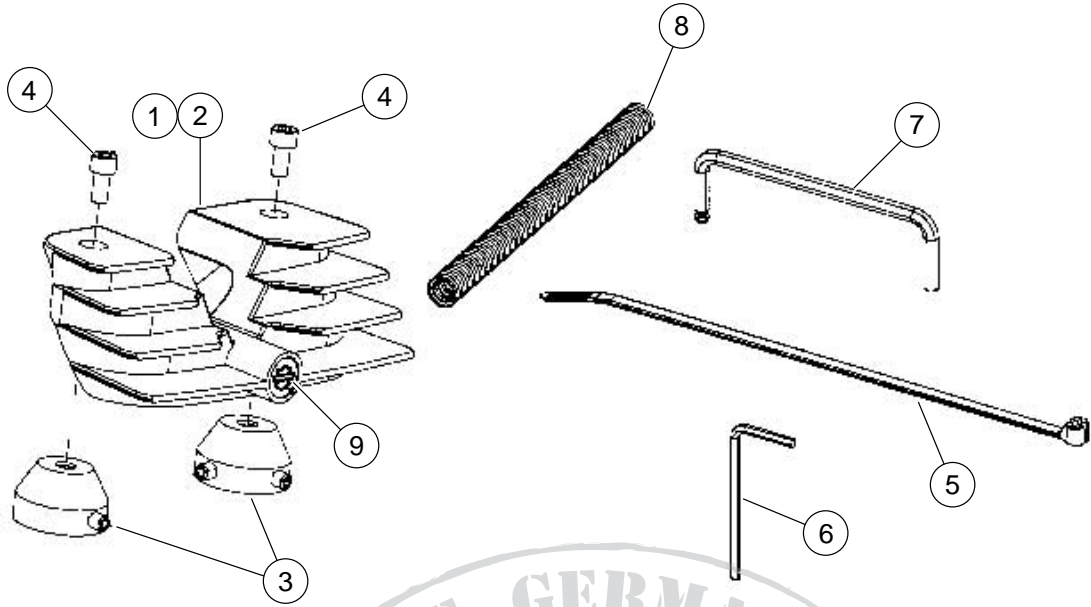


Figure 2. Service parts: Finned Headbolt Cover Kit

Table 1. Service Parts Table

Item	Description (Quantity)	Part Number	Item	Description (Quantity)	Part Number
1	Cover, headbolts front	Not sold	6	Wrench, hex key (3/32 inch)	Not sold
2	Cover, headbolts rear	Not sold	7	Wrench, hex key (5/32 inch)	Not sold
3	Assembly, mounts (4)	43874-00A	8	Shield, split flex (Dyna/Softail only)	63641-00
4	Cap screw, socket head, 10-32 x 3/8 inch (4)	Not sold	9	Logo, bar and shield (2)	Not Sold
5	Cable strap (2) (Dyna/Softail only)	10006			