



INSTRUCTIONS

-J01218

REV. 4-15-98

Kit Number 43834-98

CHROME BRAKE BLEEDER SCREW COVER

General

This kit fits all 1984 and later model motorcycles.

Installation

1. Place chrome cover over the bleeder fitting and rubber dust cap. The cutout in the cover should correspond with tab on the dust cap.

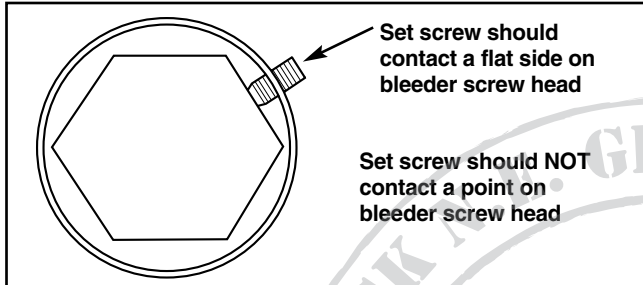


Figure 1. Set screw should contact a flat side



Figure 2. Hold down bleeder valve cover.

2. See Figures 1 and 2. Push the chrome cover down firmly, compressing the rubber cap so the cover meets the brake caliper. Tighten set screw with a 5/64" allen wrench. Insure set screw is tightened up against a flat section on the bleeder screw head.



INSTRUCTIONS

-J01218

REV. 4-15-98

Kit Number 43834-98

CHROME BRAKE BLEEDER SCREW COVER

General

This kit fits all 1984 and later model motorcycles.

Installation

1. Place chrome cover over the bleeder fitting and rubber dust cap. The cutout in the cover should correspond with tab on the dust cap.

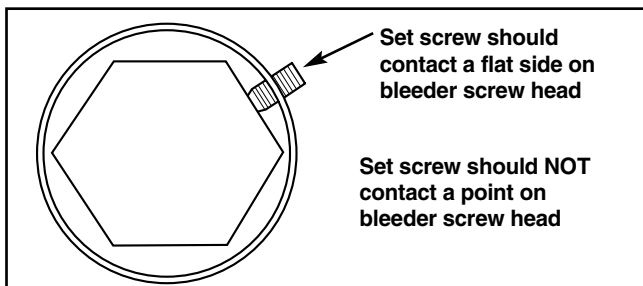


Figure 1. Set screw should contact a flat side



Figure 2. Hold down bleeder valve cover.

2. See Figures 1 and 2. Push the chrome cover down firmly, compressing the rubber cap so the cover meets the brake caliper. Tighten set screw with a 5/64" allen wrench. Insure set screw is tightened up against a flat section on the bleeder screw head.