



INSTRUCTIONS

-J01671

REV. 2007-05-15

SLOTTED CUSTOM FOOTPEG

GENERAL

Kit Number

43280-01

Models

This kit is designed for use on Harley-Davidson "male mount" style footpeg supports.

Kit Contents

Table 1. Kit 43280-01 (Chrome and Rubber)

Kit Service Parts	Part Number
LH footpeg assembly	43282-01
RH footpeg assembly	43281-01
LH rubber pad	43286-01
RH rubber pad	43285-01
Screw, hex socket buttonhead	94409-03
Screw, hex socket buttonhead	94381-92T

Additional Parts Required

NOTE

A Service Manual for your model motorcycle is available from a Harley-Davidson Dealer.

INSTALLATION

- See Figure 1. Remove locknuts (1) and screws (2) that hold existing footpegs in place. Save hardware for installation of new footpegs.
- Remove existing footpegs along with spring washers (3). Save spring washers for installation of new footpegs.
- Install new footpegs in the same manner as old footpegs were installed:
 - Place a spring washer (3), along with the mount end of the footpeg, inside the slots of the footpeg supports (4).
 - Make sure the spring washer is positioned inside the footpeg support with the square edge toward the inside of the support.
 - Secure each footpeg and spring washer with a screw (2) and locknut (1).
 - Tighten locknuts to 19 ft-lbs (26 Nm).

WARNING

Footrests must fold up and toward rear of motorcycle if struck. Failure to set footrests to fold up and back could result in death or serious injury. (00366a)

- For each footpeg, remove the screw (5) and rubber pad (6). Loosen the adjusting screw (7) until the footpeg (8) rotates. Position the footpeg (8) as desired, then tighten the adjusting screw to 19 ft-lbs (26 Nm). Place the rubber pad (6) on the footpeg and tighten the screw (5).

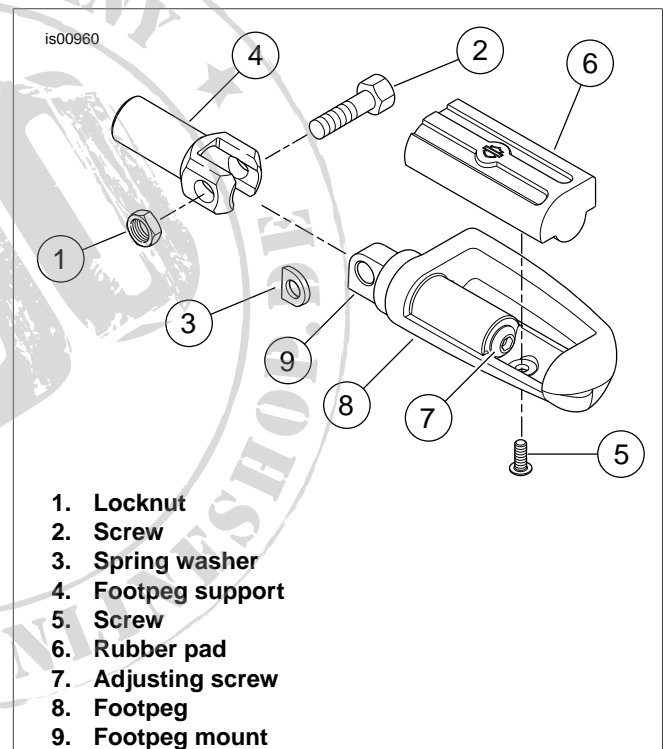


Figure 1. Custom Footpeg Installation