



INSTRUCTIONS

-J03090

REV. 09-10-03

Kit Number 42710-04, 42711-04

SKULL BRAKE PEDAL PAD KITS

General

Kit number 42710-04 is designed for installation on

- 1984 and later FX Softail model motorcycles (except FXSTDSE).
- 1993 and later FXDWG model motorcycles.

Kit number 42711-04 is designed for installation on

- 1980 and later Touring model motorcycles.
- 1986 and later FL Softail model motorcycles.

See Parts Illustration for kit contents.

NOTE

A Service Manual for your motorcycle is available from any Harley-Davidson Dealer.

Installation

1. Remove previously installed brake pedal cover from motorcycle.
2. Position new brake pedal chrome cover (1) over brake pedal pad (2).

Large Brake Pedal

3. Align assembled brake pad (items 1, 2, and 5) from kit to brake pedal and insert and tighten screw (4) through the washer (3), and into the chrome cover (1).
4. Tighten screw to 19 ft-lbs (26 Nm).

Small Brake Pedal

5. Align and install new cover and pad. Insert screw (4) through the washer (3), brake pedal and into brake pedal pad (2).
6. Insert the screw (4) and washer (3) into the chrome cover.
7. Tighten screw to 33 in-lbs (2.5 Nm).

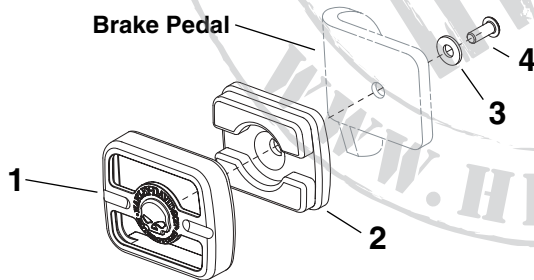


Service Parts

Part Number 42710-04, 42711-04 | Date 9/03

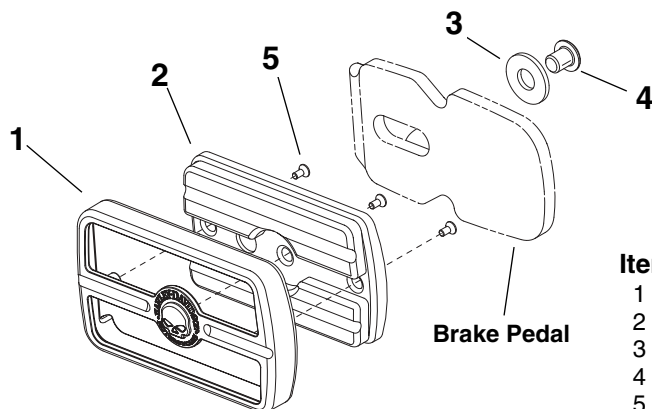
Skull Brake Pedal Pad Kit

i05524a



SMALL - Brake Pedal Pad

Item	Description/Qty	Part Number
1	Chrome cover,brake pedal	42713-04
2	Tread, Pad, brake pedal	42714-04
3	Washer, flat, offset	6716
4	Screw, hex socket, button head	3026



LARGE - Brake Pedal Pad

Item	Description/Qty	Part Number
1	Chrome cover, brake pedal	42715-04
2	Tread, Pad, brake pedal	42716-04
3	Washer, flat, offset	6333
4	Screw, hex socket, button-head	3340
5	Screw, flat head (3)	4277