



# INSTRUCTIONS

-J01718

2015-03-23

## BILLET-STYLE REAR BRAKE LEVER KITS

### GENERAL

#### Kit Number

42666-03, 46873-09, 41600003

#### Models

For model fitment information, see the P&A Retail Catalog or the Parts and Accessories section of [www.harley-davidson.com](http://www.harley-davidson.com) (English only).

#### ▲ WARNING

**The rider's safety depends upon the correct installation of this kit. Use the appropriate service manual procedures. If the procedure is not within your capabilities or you do not have the correct tools, have a Harley-Davidson dealer perform the installation. Improper installation of this kit could result in death or serious injury. (00333a)**

#### ▲ WARNING

**Brakes are a critical safety component. Contact a Harley-Davidson dealer for brake repair or replacement. Improperly serviced brakes can adversely affect brake performance, which could result in death or serious injury. (00054a)**

#### Kit Contents

See Figure 2 and Table 1.

#### REMOVAL

1. See Figure 1. Remove cotter pin (12) and washer (11) from clevis pin (2). If necessary, use a pliers to remove cotter pin. Discard cotter pin.
2. Remove and save footrest bolt, spring washer and footrest.
3. Remove clevis pin (2) from the push rod (1). Thoroughly clean and examine clevis pin assembly for wear. Replace if necessary.
4. Remove brake lever mounting fastener (3) and footrest mounting clevis (4) from bracket mount (8). Save all hardware for assembly.
5. Remove and save the brake pedal pad (9) and nut (10), if equipped. Discard brake lever (5). For 2006 and later models, also discard the OE brake pedal pad.
6. Thoroughly clean the lever mounting shaft (6) of grease and dirt.

#### NOTE

*It is not necessary to remove fasteners (7) and mounting bracket (8).*

### INSTALLATION

#### NOTE

*Bushing(s) are press-fit into the brake lever and under normal circumstances should remain in the lever.*

1. See Figure 2. Install billet-style brake lever (2) onto shaft.
2. See Figure 1. Align the brake lever shaft and footrest mounting clevis (4) and secure to bracket mount (8) with fastener (3). Tighten fastener to 43–47 N·m (32–35 ft-lbs).
3. Align clevis holes and insert clevis pin (2) (removed earlier). If clevis pin is a press-fit, tap it in gently while supporting the mating clevis of the master cylinder.
4. Install washer (11) as shown and insert new cotter pin (item 1, Figure 2) to secure clevis pin (2).
5. **For 2003-2005 Models:** Install brake pad (9) to brake lever with nut (10). Tighten securely. **For 2006 and Later Models:** Install new brake pad (9) of your choice.
6. Install footrest with spring washer and secure to mount using fastener.

#### ▲ WARNING

**After repairing the brake system, test brakes at low speed. If brakes are not operating properly, testing at high speeds can cause loss of control, which could result in death or serious injury. (00289a)**

7. Check brake for proper operation and clearance through full travel.



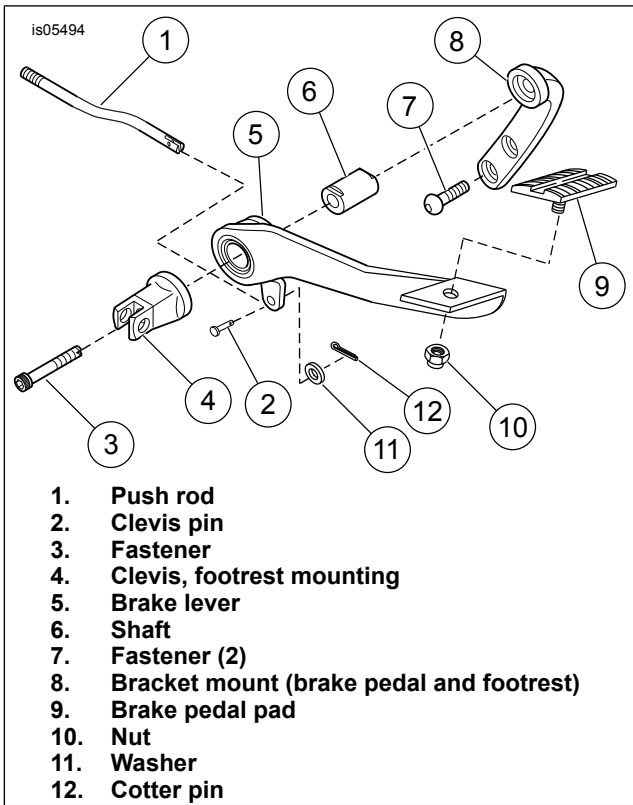


Figure 1. Stock Brake Lever (2003-2005 Models Shown)

## SERVICE PARTS

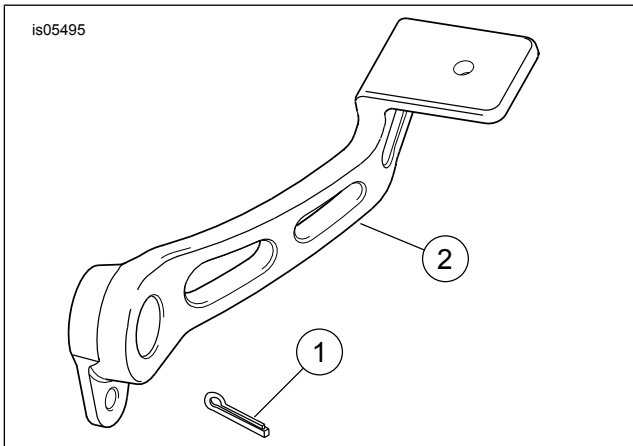


Figure 2. Service Parts: Billet-Style Rear Brake Lever

Table 1. Service Parts: Billet-Style Rear Brake Lever

Item	Description (Quantity)	Part Number
1	Cotter pin	515
2	Billet-style brake lever	Not Sold Separately