



INSTALLATION

TECH-CONNECT POUCH

4127

PARTS INCLUDED

- 1 Tech-Connect Pouch Assembly with Rubber Strap
- 1 Thick Foam Spacer
- 1 Thin Foam Spacer
- 1 Installation Instructions

Please read and understand entire instructions before starting installation.

THANK YOU FOR CHOOSING KÜRYAKYN!

IN ORDER TO PROTECT YOU AND OTHERS FROM POSSIBLE INJURY AND/OR PROPERTY DAMAGE OR LOSS, PLEASE PAY CLOSE ATTENTION TO ALL INSTRUCTIONS, WARNINGS, CAUTIONS AND NOTICES REGARDING THE USE AND CARE OF THIS PRODUCT.

WARNING	THIS INDICATION ALERTS YOU TO THE FACT THAT IGNORING THE CONTENTS DESCRIBED HEREIN CAN RESULT IN POTENTIAL DEATH OR SERIOUS INJURY.
NOTICE	This indication alerts you to the fact that ignoring the contents described herein may negatively affect product performance and functionality.
CAUTION	This indication alerts you to the fact that ignoring the contents described herein can result in potential injury or material damage.

NOTICE

IF INSTALLING THIS PRODUCT FOR ANOTHER PARTY, PLEASE MAKE SURE THEY RECEIVE THIS COPY OF THE INSTALLATION INSTRUCTIONS SO THEY ARE AWARE OF THE IMPORTANT INFORMATION CONTAINED IN THEM.

STRICTLY OBSERVE THE FOLLOWING GUIDELINES IN ORDER TO USE THE PRODUCT PROPERLY AND AVOID POTENTIALLY DANGEROUS ACCIDENTS.

STEP 1 Read and understand all steps in the instructions before starting the installation. Park the motorcycle on a hard, level surface and turn off the ignition.

CAUTION Ensure that the installation of this product does not interfere with the proper operation of the motorcycle before riding.

STEP 2 Test fit the pouch to the handlebars to decide the location where it will not interfere with any component on the motorcycle.

CUSTOMER SERVICE

877.370.3604 (toll free)

INSTALLATION QUESTIONS

techsupport@kuryakyn.com
or call 715.247.2983

LIMITED WARRANTY

Küryakyn warrants that any Küryakyn products sold hereunder, shall be free of defects in materials and workmanship for a period of one (1) year from the date of purchase by the consumer excepting the following provisions:

- Küryakyn shall have no obligation in the event the customer is unable to provide a receipt showing the date the customer purchased the product(s).
 - The product must be properly installed, maintained and operated under normal conditions.
 - Küryakyn makes no warranty, expressed or implied, with respect to any gold plated products.
 - Küryakyn shall not be liable for any consequential and incidental damages, including labor and paint, resulting from failure of a Küryakyn product, failure to deliver, delay in delivery, delivery in nonconforming condition, or for any breach of contract or duty between Küryakyn and a customer.
- Küryakyn products are often intended for use in specific applications. Küryakyn makes no warranty if a Küryakyn product is used in applications other than intended.
- Küryakyn electrical products are warranted for one (1) year from the date of purchase by the consumer. L.E.D.'S contained in components of Küryakyn products will be warranted for defects in materials and workmanship for 3 years from the date of purchase where as all other components shall be warranted for one(1) year. This includes, but is not limited to; control modules, wiring, chrome & other components.
- Küryakyn makes no warranty of any kind in regard to other manufacturer's products distributed by Küryakyn. Küryakyn will pass on all warranties made by the manufacturer and where possible, will expedite the claim on behalf of the customer, but ultimately, responsibility for disposition of the warranty claim lies with the manufacturer.

ABOUT OUR CATALOG

For purchasing Küryakyn® products, you can receive a complete catalog free of charge. Send the Proof-of-Purchase below with your address to: Küryakyn, P.O. Box 339, Somerset, WI 54025. Please indicate either Accessories Catalog for Harley-Davidson® or GL & Metric Cruisers.

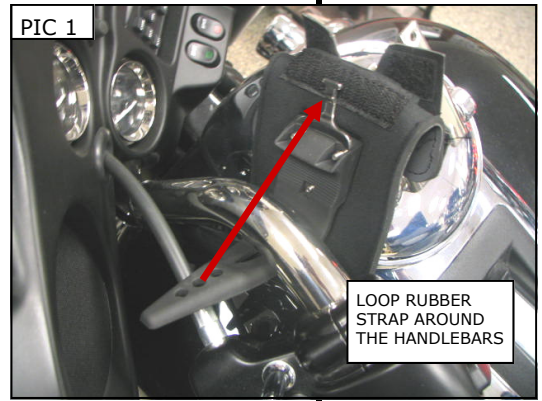
Be sure to ask your local dealer about other Küryakyn® products, the motorcycle parts and accessories designed for riders by riders.

©2005 Küryakyn USA® All Rights reserved.



kuryakyn.com

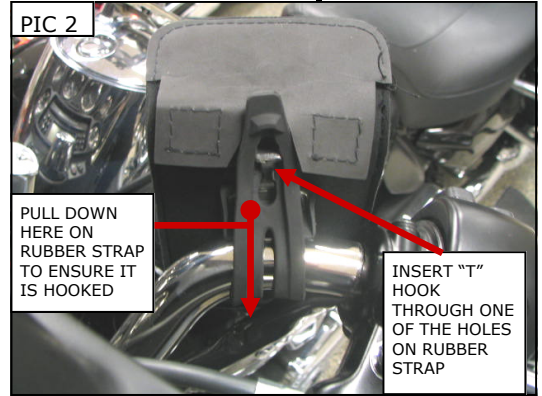
STEP 3 Install the pouch by wrapping the rubber strap around the handlebar and hooking one of the holes in the rubber strap over the "T" hook. PIC 1 and PIC 2 Pull the rubber strap to ensure the "T" hook is seated. PIC 2



NOTICE Protect the clear window from damage, tools may scratch the window surface.

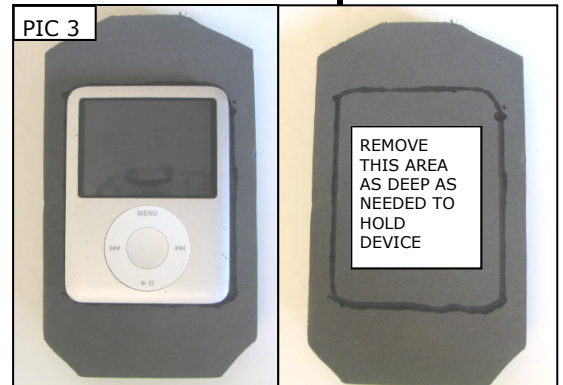
STEP 4 Turn the handlebars lock to lock to check for clearance.

WARNING ENSURE THAT THERE IS CLEARANCE AT ALL POINTS WHEN THE HANDLEBARS ARE TURNED. INSUFFICIENT CLEARANCE MAY CAUSE DAMAGE TO THE MOTORCYCLE OR CAN CAUSE LOSS OF CONTROL THAT COULD RESULT IN SEVERE INJURY OR DEATH.



STEP 5 The foam inserts included fit inside the pouch and can be cut-to-fit to secure smaller GPS units as well as other small electronics or accessories. PIC 3 The thin pad will provide a cushion layer between the back plastic mount inside the bag and any uncased mobile device.

NOTICE Küryakyn is not responsible for items that may be stolen or damaged in relation to the use of this product.



NOTICE Ensure that the Mobile Device is secure in the Tech-Connect Pouch. Küryakyn is not responsible for any Device that is damaged from use in this Pouch or from the Pouch not being properly secured to the motorcycle.

NOTICE This Pouch is not waterproof. Remove the Mobile Device and stow during inclement weather. Küryakyn will not be responsible for any Mobile Device damaged when using this pouch.

NOTICE Motorcycling can be done in a harsh environment. Make sure your Mobile Device is appropriate for this application.

WARNING DO NOT ATTEMPT TO OPERATE OR REMOVE THE MOBILE DEVICE FROM THE POUCH WHILE OPERATING THE MOTORCYCLE.