



INSTRUCTIONS

-J03475

REV. 09-10-2004

Kit Numbers 38752-04

CABLE SIDECOVER RELEASE KIT FOR SCREAMIN' EAGLE 6-SPEED TRANSMISSION

General

This kit is designed to fit motorcycles equipped with Screamin Eagle 6-speed transmissions.

WARNING

The rider's safety depends upon the correct installation of this kit. Use the appropriate Service Manual procedures. If the procedure is not within your capabilities or you do not have the correct tools, have a Harley-Davidson dealer perform the installation. Improper installation of this kit could result in death or serious injury. (00333a)

NOTE

A Service Manual for your model motorcycle is available from any Harley-Davidson Dealer.

WARNING

To prevent accidental vehicle start-up, which could cause death or serious injury, disconnect battery cables (negative (-) cable first) before proceeding. (00307a)

1. Disconnect battery cables, negative (-) cable first.

WARNING

Wear safety glasses or goggles when removing or installing retaining rings. Retaining rings can slip from the pliers and could be propelled with enough force to cause serious eye injury. (00312a)

Clutch Release Cover Assembly

1. Install clutch cable fitting into clutch release cover. Do not tighten cable fitting at this time.

NOTE

Replace cable fitting O-ring if damaged or deformed.

NOTE

Stock 5-Speed Side Cover is shown for illustration purposes only in Figure 1.

2. See Figure 1. Place outer ramp (1) in clutch release cover (2) recess with tang (3) in cover slot.
3. Apply a multi-purpose grease to the three balls (4) and outer ramp sockets (5). Place a ball in each of three outer ramp sockets.
4. Hold coupling (6) with button facing outboard. Place cable end in recess of coupling. With ball sockets facing outboard, place hook of inner ramp (7) on button of coupling. Holding inner ramp and coupling together, turn the assembly over.
5. Place inner ramp (ball socket side down) over balls in outer ramp sockets.

WARNING

Wear safety glasses or goggles when removing or installing retaining rings. Retaining rings can slip from the pliers and could be propelled with enough force to cause serious eye injury. (00312a)

6. Install the retaining ring so that the opening is above and to the right of the outer ramp tang slot in the clutch release cover.

NOTE

Obtain the Screamin' Eagle 6-Speed Side Cover Gasket (H-D Part Number 35148-03) supplied with the 6-Speed Transmission or Gear Set Kit. This gasket is also sold separately.

7. See Service Parts List.
 - a. Apply transmission lubricant or SYN3 to both ends of the center clutch pushrod (10) and install center pushrod into the mainshaft.

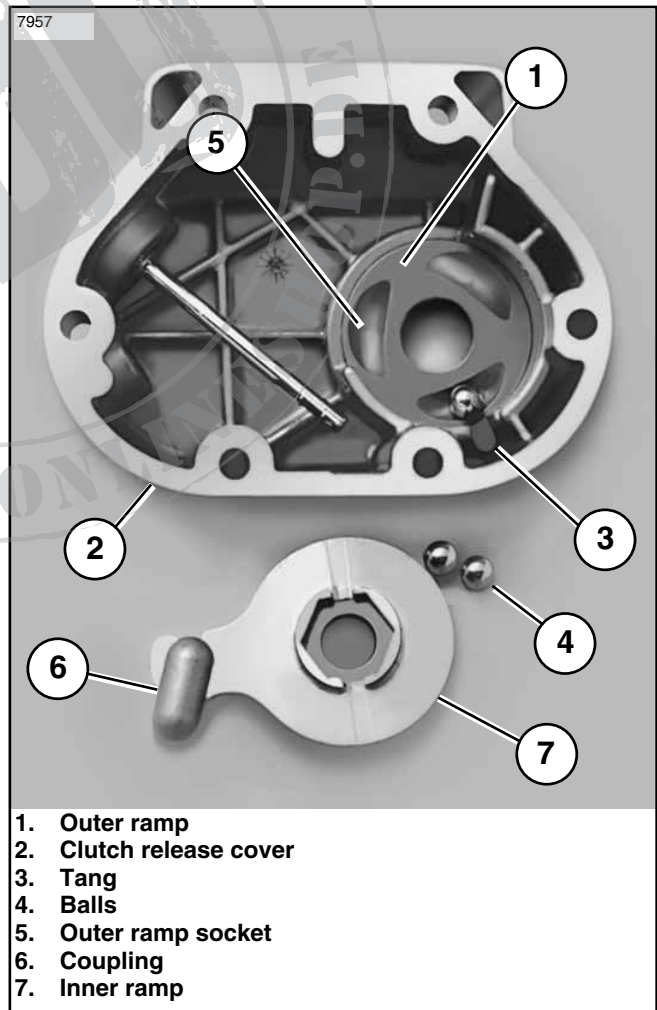


Figure 1. Install Outer Ramp and Balls

- b. Assemble the right clutch pushrod (9) by placing one pushrod thrust washer (6) over the small end of the right pushrod. Apply transmission lubricant or SYN3 to pushrod bearing (7) and install on small end of the right pushrod. Install the next pushrod thrust washer (6) on the small end of the right pushrod. Gently install the pushrod retaining ring (8) into the right pushrod groove. Ensure that the retaining ring is fully seated in the groove.
 - c. Install the right pushrod assembly into the main shaft after the center pushrod.
8. Hang a **new** gasket on the dowels.

NOTE

Obtain two 2-1/4 in. (57mm) long screws (H-D Part Number 4717A) and four 1-1/2 in. (38mm) long screws (H-D Part Number 4718A). These items are supplied with the 6-Speed Transmission or Gear Set and are also sold separately.

9. Holding clutch release cover in position, install six socket head screws. Tighten screws to 84-132 in-lbs (9.5-14.9 Nm).
10. Tighten clutch cable fitting to 36-60 in-lbs (4-7 Nm).
11. Check the O-ring on the transmission lubricant drain plug for tears, cuts or general deterioration. Replace as necessary. Install the transmission lubricant drain plug and tighten to 14-21 ft-lbs (19-28 Nm).

CAUTION

Do not overtighten filler or drain plugs. Overtightening plugs may cause leaks.

12. Obtain the Transmission filler plug/dipstick (H-D Part Number 37075-87) and O-ring (H-D Part Number 11132) supplied with 6-Speed Transmission or Gear Set. Install O-ring on dipstick.
13. Fill the transmission with 20-24 oz. (590-710 ml) of transmission lubricant or until the lubricant level on the dipstick of the filler plug is at the **FULL** mark with the motorcycle in a level, upright position and the filler plug resting on the threads.
14. Install the transmission filler plug/dipstick in the clutch release cover. Tighten the plug to 25-75 in-lbs (2.8-8.5 Nm).
15. Adjust the clutch cable. See CLUTCH, ADJUSTMENT in your service manual.
16. Install the exhaust system. See EXHAUST SYSTEM INSTALLATION in your service manual.
17. Refer to your Exhaust System in your Service Manual and follow the instructions given to install the complete exhaust with heat shields.

⚠ WARNING

Connect positive (+) battery cable first. If positive (+) cable should contact ground with negative (-) cable connected, the resulting sparks can cause a battery explosion, which could result in death or serious injury. (00068a)

⚠ WARNING

After installing seat, pull upward on front of seat to be sure it is in locked position. While riding, a loose seat can shift causing loss of control, which could result in death or serious injury. (00070a)

18. Refer to your Service Manual, and follow instructions given to reconnect the battery cables, positive cable first and install the seat.
19. See your Service Manual TRANSMISSION LUBRICANT and replace the transmission fluid after the first 500 miles. Refer to your Service Manual and follow the instructions for the proper service interval thereafter.



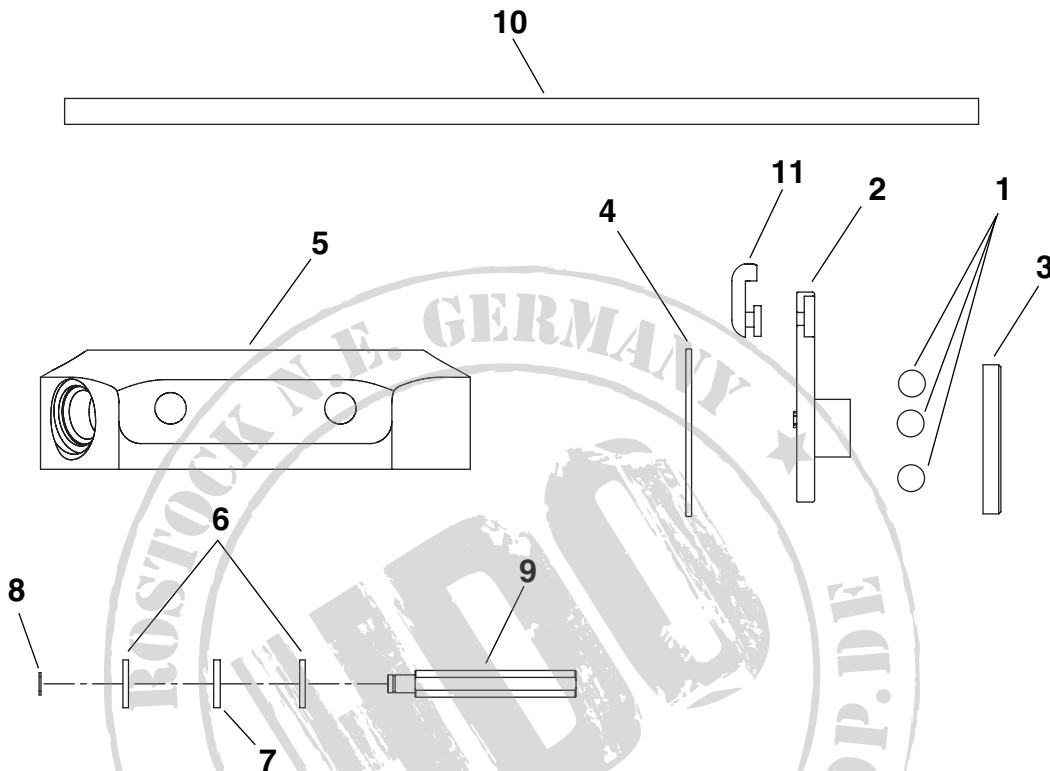
Service Parts

Part No. 38752-04

Date 9/04

Cable Sidecover Release Kit for Screamin' Eagle 6-Speed Transmissions

i06752



Item	Description	Part No.
1	Ramp ball bearing (3)	8873
2	Outer ramp	25605-00
3	Inner ramp	25604-00
4	Ramp retaining ring	10998
5	Chrome clutch release cover	35157-03
6	Pushrod thrust washer (2)	37313-80
7	Pushrod bearing	37312-75
8	Pushrod retaining ring	11096
9	Clutch pushrod, right	35149-03
10	Clutch pushrod, center	37088-85
11	Clutch cable coupler	34920-86A