



INSTRUCTIONS

-J04304

REV. 2007-04-11

FOLDING HEEL SHIFTER KIT

GENERAL

Kit Number

33876-07

Models

For model fitment information, please see the P&A Retail Catalog or the Parts and Accessories section of www.harley-davidson.com (English only).

Additional Parts and Supplies Required

Loctite® 243 (Blue) Threadlocker and Sealant (H-D Part Number 99642-97) is required for the proper installation of this kit.

Proper installation of this kit also requires the re-attachment of the shifter peg. If replacement of the original equipment (O.E.) shifter peg is needed, refer to the Parts Catalog for your year and model vehicle.

See the P&A Retail Catalog or the Parts and Accessories section of www.harley-davidson.com (English only) for a selection of Genuine Motor Accessory shifter pegs that are available. These can be easily installed at the same time as this kit.

Kit Contents

See Figure 1 and Table 1.

INSTALLATION

NOTE

Before removing the original heel shifter lever (if so equipped), note the angular position. You may wish to install the new lever at the same position and angle.

*Remove the shifter peg from the original heel shift lever for re-attachment to the **new** heel shift lever if not being replaced.*

1. Remove the original heel shift lever or shifter shaft cover. Retain the socket head screw that secures the shift lever to the splined shifter shaft.

NOTE

*The original equipment heel shift lever may have the socket head screw installed from the top or bottom, depending on your model motorcycle. Install the new heel shift lever so the mounting screw installs **from the bottom**.*

2. See Figure 1. Obtain the **new** heel shifter assembly (1) from the kit. Position the lever so the screw hole counter-bore is at the bottom. Position the shift lever to the desired angle, and slide the lever onto the splined shifter shaft.
3. Align the screw hole with the notch on the shaft. Apply a few drops of Loctite Blue to the threads of the screw removed in Step 1, and insert the screw into the counter-bored hole. Tighten the screw to 24-26 ft-lbs (32-35 Nm).
4. Install the shifter peg onto the new shift lever. If using the original peg, place a few drops of Loctite Blue onto the screw threads prior to installation. Tighten the shifter peg securely.
5. Check for proper operation and clearance.

NOTE

*The Heel Shifter in this Kit is fully assembled (except for the shifter peg). If service is required and the TORX® screw (5) needs to be removed, replace the screw with a **new** TORX screw, and tighten to 36 **in-lbs** (4.0 Nm).*

SERVICE PARTS

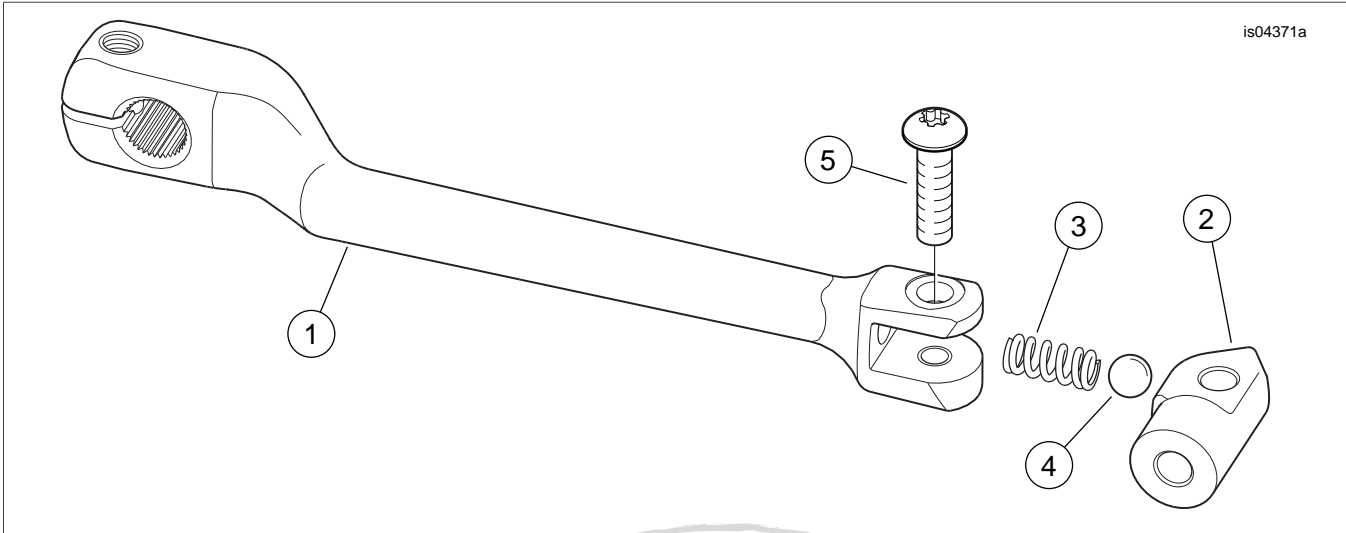


Figure 1. Service Parts, Folding Heel Shifter Kit

Table 1. Service Parts Table

Item	Description (Quantity)	Part Number
1	Lever, heel shifter	Not sold separately
2	Pivot, heel shifter lever	33897-07
3	Spring	33085-74
4	Ball	8861
5	Screw, button head TORX®, 1/4-20 x 7/8 in. long, (Chrome)	4691