



# INSTRUCTIONS

-J04100

REV. 2006-04-20

## CHROME FOOTBOARD MOUNTING BRACKET KIT

### GENERAL

#### Kit Number

33698-07

#### Models

This kit fits 2007 FLSTF, FLSTC, FLSTN and FLSTSC model motorcycles.

#### Additional Parts Required

Proper installation of this kit requires Loctite® 243 (Blue), Harley Davidson Part Number 99642-99.

Ask your Harley-Davidson Dealer about the selection of Operator Footboards, Brake Levers and Brake Pedal Pads that are also available for these models. These items can be easily installed at the same time as this kit.

### WARNING

The rider's safety depends upon the correct installation of this kit. Use the appropriate service manual procedures. If the procedure is not within your capabilities or you do not have the correct tools, have a Harley-Davidson dealer perform the installation. Improper installation of this kit could result in death or serious injury. (00333a)

#### NOTE

This instruction sheet references Service Manual information. A Service Manual for your model motorcycle is required for this installation and is available from a Harley-Davidson Dealer.

New break lever cotter pin is not supplied with this kit.

#### Kit Contents

See Figure 5 and Table 1.

### INSTALLATION

#### Left Side

### WARNING

Block vehicle under frame such that vehicle will not fall when jiffy stand is removed. Failure to properly block vehicle could result in death or serious injury. (00462b)

1. Block the motorcycle under the frame so that it is upright and level, with the weight off of the jiffy stand.
2. See Figure 1. Remove the two bolts (10) and nuts (11) fastening the footboard (12) to the footboard mounting bracket (1). Save the hardware for later installation. Save the footboard unless being replaced.

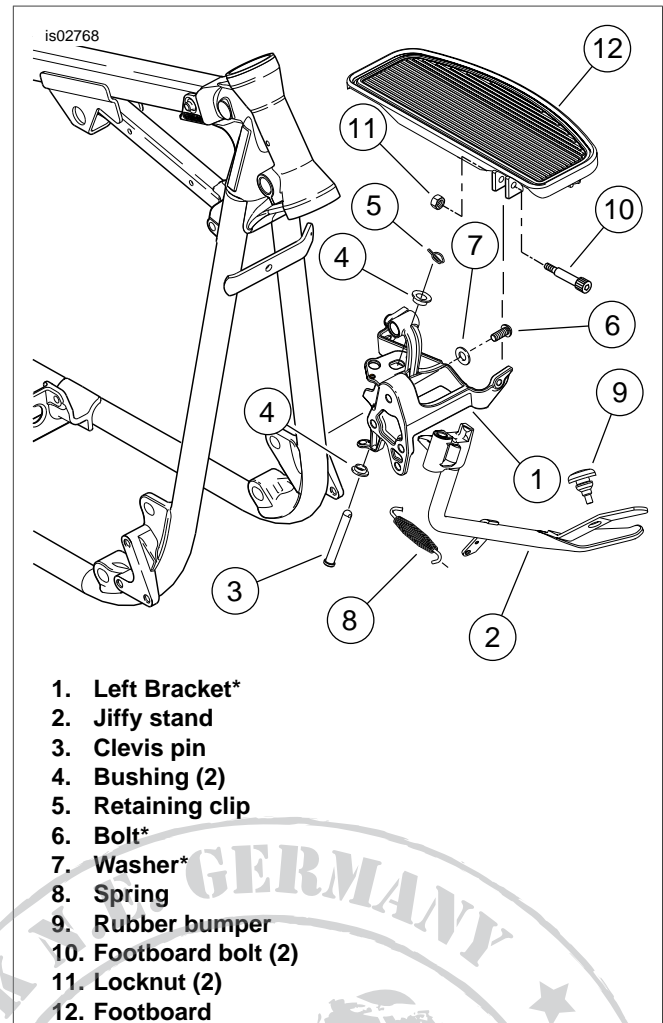


Figure 1. Left Side Footboard Mounting Bracket and Jiffy Stand Components

#### NOTE

In above illustration items with Asterisk\* are in kit. Other items shown for reference only.

3. Move the jiffy stand (2) to the retracted (up) position.
4. Remove the retaining clip (5) and bushing (4) from top of pivot pin (3). Pull out pivot pin and lower bushing (4). Retain the hardware for reinstallation.
5. Detach the spring (8) from the jiffy stand (2) and the footboard bracket (1). Slide the jiffy stand out of the bracket.
6. Clean and inspect the jiffy stand assembly for worn or damaged parts. If parts replacement is necessary, refer to the Jiffy Stand section of your Service Manual for replacement procedures.

7. Remove and discard the three screws (6) and washers (7) from the footboard/jiffy stand mounting bracket. Discard the existing bracket
8. See the Service Manual and follow the instructions to detach the shifter linkage.
9. See Figure 5. Obtain the new left side chrome bracket (2), and three chrome screws (3) and washers (4) from the kit.
10. Place the chrome washers over the screw threads. Apply LOCTITE® 243 (Blue) to the threads, and install the new bracket assembly to the motorcycle frame. Tighten the screws to 40 ft-lbs (54.2 Nm).

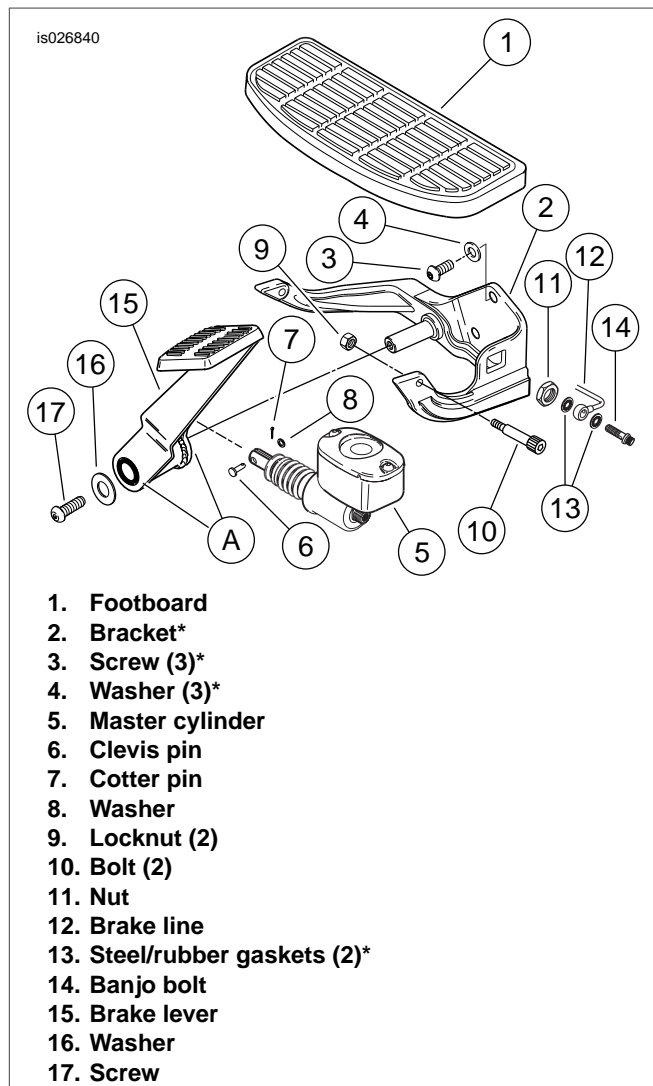
### **⚠ WARNING**

**If leg stop is incorrectly installed, excessive wear can allow vehicle to fall when rested on jiffy stand, which could result in death or serious injury. (00479b)**

11. See Figure 1. Insert the jiffy stand shaft into the hole in the bracket. Holding the jiffy stand at the full forward (down) position, install the pivot pin (3) and bushing (4) from under the bracket and through the jiffy stand. Install the upper bushing (4) and retaining clip (5).
12. Attach the spring (8) to the bracket and jiffy stand. When properly installed, the hook on the spring side connected to the bracket will face upward.
13. Verify that rubber bumper (9) is in place on prong of jiffy stand. Without the bumper, the stand will make hard contact with the primary drive cover when retracted, which may result in damage to the cover.
14. Extend and retract the jiffy stand leg several times to verify proper operation. The stand should swing freely to the fully extended and fully retracted positions.
15. Refer to applicable Service Manual and re-attach the shifter linkage.
16. See Figure 1. Install the footboard to the mounting bracket using the two bolts (10) and nuts (11) saved earlier. Tighten the hardware to 25-30 ft-lbs (34-41 Nm).

### **Right Side**

1. See Figure 2. Remove the two bolts (10) and nuts (9) fastening the footboard (1) to the right-side footboard mounting bracket (2). Save the hardware for later installation. Save the footboard unless being replaced.



**Figure 2. Right Side Footboard Mounting Bracket and Brake Lever Components**

### **NOTE**

*In above illustration items with Asterisk\* are in kit. Other items shown for reference only.*

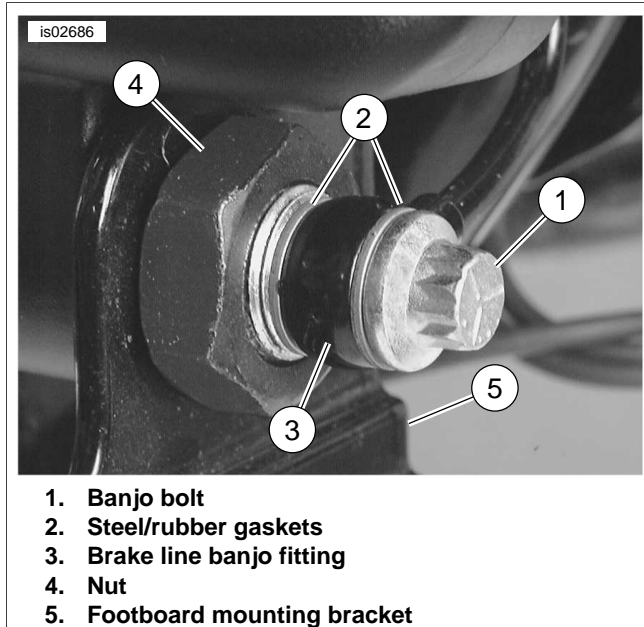
2. Remove the screw (17) and washer (16) securing the rear brake lever (15) to the shaft on the right side mounting bracket. Be careful not to lose the "O"-rings. Save the screw and washer for later installation.
3. Remove the banjo bolt (14) and two steel/rubber gaskets (13) to disconnect the brake line (12) from the master cylinder. Discard the gaskets.

### **CAUTION**

**Avoid leakage. Be sure gaskets, banjo bolt(s) and brake line are clean and undamaged before assembly. (00323a)**

4. Remove the nut (11) to free the master cylinder reservoir assembly from the mounting bracket and remove. Save the nut for later installation.
5. Slide the rear brake lever assembly and master cylinder off of the shaft, and save unless being replaced.

6. Remove the three screws (3) and washers (4) from the mounting bracket. Discard the bracket, screws and washers.
7. See Figure 5. Obtain the new right side chrome bracket (1), and three chrome screws (3) and washers (4) from the kit.
8. Place the chrome washers over the screw threads. Apply LOCTITE® 243 (Blue) to the threads, and install the new bracket assembly to the motorcycle frame. Tighten the screws to 30-40 ft-lbs (41-54 Nm).
9. See Figure 2. Obtain the brake lever (15) and make sure the "O"-rings remain in position. Slide the brake lever onto the mounting bracket shaft. Install the screw (17) and washer (16), and tighten to 12-16 ft-lbs (16-22 Nm).



**Figure 3. Rear Brake Reservoir Mount**

10. See Figure 3. Fit the collar of the master cylinder cartridge body into the hole of the new right-side footboard mounting bracket (5). Apply LOCTITE® 243 (Blue) to the threads of the nut (4). Install the nut on the cartridge body until finger tight. Tighten to 30-40 ft-lbs (41-54 Nm).

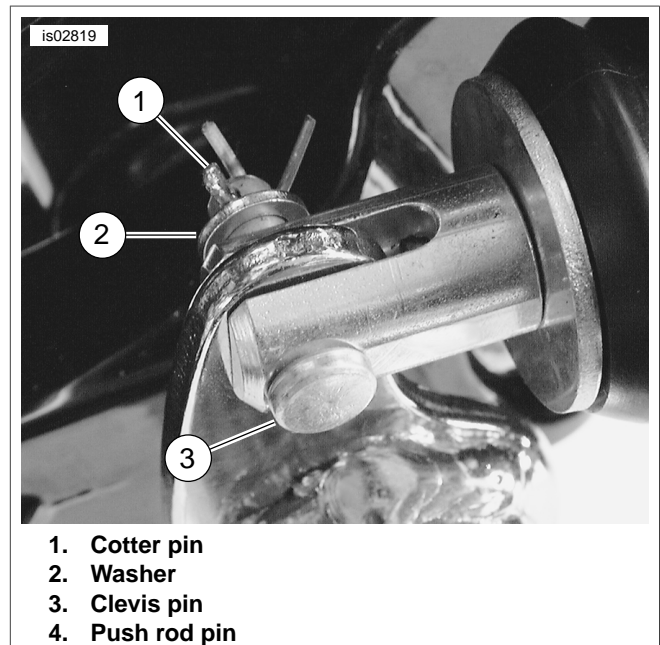
#### **⚠ WARNING**

**Replace brake line gaskets. Re-using original gaskets can cause brake failure and loss of vehicle control, which could result in death or serious injury. (00318a)**

#### **CAUTION**

**Avoid leakage. Be sure gaskets, banjo bolt(s), brake line and master cylinder bore are clean and undamaged before assembly. (00322a)**

11. Lubricate the two new steel/rubber gaskets (2) from the kit with the appropriate brake fluid for your year and model of motorcycle. See your Owner's Manual for the proper brake fluid specification. Position a gasket on each side of the brake line banjo fitting (3). Insert the banjo bolt (1) through the gaskets and fitting. Tighten to 17-22 ft-lbs (23-30 Nm).



**Figure 4. Rear Brake Control: Rear Mount**

12. See Figure 4. Install master cylinder assembly on brake pedal. Install washer (2) and new catter pin (1) on clevis pin (3).
13. Lubricate the brake lever fitting with Wheel Bearing Grease (Part Number 99856-92) until a small amount of grease is visible around the edges of the brake lever.

#### **NOTE**

*The rear brake is nonadjustable. When brake system components are properly assembled, brake pedal is correctly adjusted.*

14. See Figure 2. Install the footboard to the mounting bracket using the two screws (3) and nuts (4) saved earlier. Tighten the hardware to 25-30 ft-lbs (34-41 Nm).

#### **⚠ CAUTION**

**Direct contact of D.O.T. 4 brake fluid with eyes can cause irritation. Avoid eye contact. In case of eye contact flush with large amounts of water and get medical attention. Swallowing large amounts of D.O.T. 4 brake fluid can cause digestive discomfort. If swallowed, obtain medical attention. Use in well ventilated area. KEEP OUT OF REACH OF CHILDREN. (00240a)**

15. Make sure that the rear brake master cylinder is in a level position. Remove the master cylinder cover.
16. Bleed the brakes. See BLEEDING HYDRAULIC BRAKES in the Service Manual.

#### **⚠ WARNING**

**After servicing brakes and before moving motorcycle, pump brakes to build brake system pressure. Insufficient pressure can adversely affect brake performance, which could result in death or serious injury. (00279a)**

17. Install the gasket and cover to the master cylinder. Tighten the cover screws to 6-8 in-lbs (0.7-0.9 Nm).

**⚠ WARNING**

The jiffy stand locks when placed in the full forward (down) position with vehicle weight on it. If the jiffy stand is not in the full forward (down) position with vehicle weight on it, the vehicle can fall over which could result in death or serious injury. (00006a)

- 18. Move the jiffy stand to the full forward (down) position. Carefully remove the support from beneath the motorcycle frame and rest the motorcycle on the jiffy stand.
- 19. Make sure the jiffy stand operates correctly prior to riding the motorcycle.

**⚠ WARNING**

After repairing the brake system, test brakes at low speed. If brakes are not operating properly, testing at high speeds can cause loss of control, which could result in death or serious injury. (00289a)

- 20. Turn the Ignition/Light Key Switch to IGNITION. Pump the rear brake foot pedal to verify proper operation of the brake lamp.

**SERVICE PARTS**

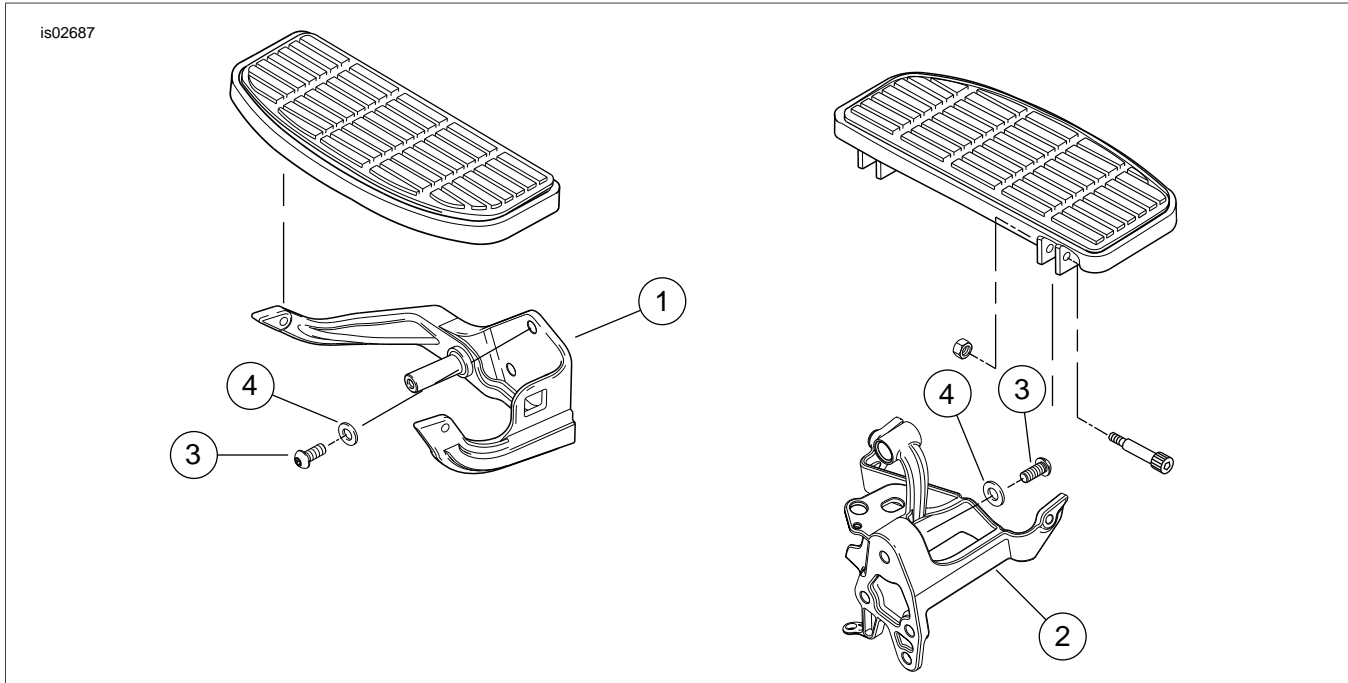


Figure 5. Chrome Footboard Mounting Bracket Kit

Table 1. Service Parts: Chrome Footboard Mounting Bracket Kit

Item	Description (Quantity)	Part Number
1	Bracket, floorboard mounting (right), chrome	33688-03A
2	Bracket, floorboard mounting (left), chrome	33670-07
3	Screw, chrome (6)	94605-98
4	Washer, chrome (6)	Not Sold Separately
5	Steel/rubber gasket (2) (not shown)	41731-01

