



INSTRUCTIONS

-J02607

2014-11-05

HEEL/TOE SHIFT LEVER KITS

GENERAL

Kit Number

34023-08, 34535-00B, 34558-05A, 34045-10, 33600076

Models

For model fitment information, see the P&A Retail Catalog or the Parts and Accessories section of www.harley-davidson.com (English only).

Tools and Supplies Required

Loctite[®] 243 (Blue) Threadlocker and Sealant (H-D Part Number 99642-97) is required for the proper installation of this kit.

Kit Contents

See Figure 1 and Table 1.

INSTALLATION

NOTE

The shift levers in these kits have opposite counterbored screw holes. When the toe and heel levers are positioned correctly, the socket head cap screws are installed from the bottom of both levers.

NOTE

Original equipment shift levers are installed from the top or bottom, depending on the model motorcycle.

1. Before removing the original shift levers, note the orientation. You may want to replace them at the same position and angle.
2. See Figure 1. Remove the original equipment shifter pegs (A) and retain for installation of the new levers if desired. Remove the socket head screws (3) that clamp the shift levers onto the splined shifter shaft. Remove the original equipment shift levers.
3. First, position the toe shifter lever (1) so the counterbored screw hole is at the bottom. Slide the toe shifter lever onto the splined shifter shaft. Position to the desired angle, aligning the screw hole with the notch on the shaft.
4. Install the heel shift lever (2) with the counterbore at the bottom.
5. Add a few drops of Loctite 243 (blue) to the socket head screws (3), and insert the screws into the counterbored holes. Tighten to 32–35 N·m (24–26 ft-lbs).
6. Install the shifter pegs onto the new shift levers. If using the original pegs, place a few drops of Loctite 243 (blue) onto the screw threads before installation. Tighten the shifter peg screws.
7. Check for proper operation and clearance.



SERVICE PARTS

is02122a

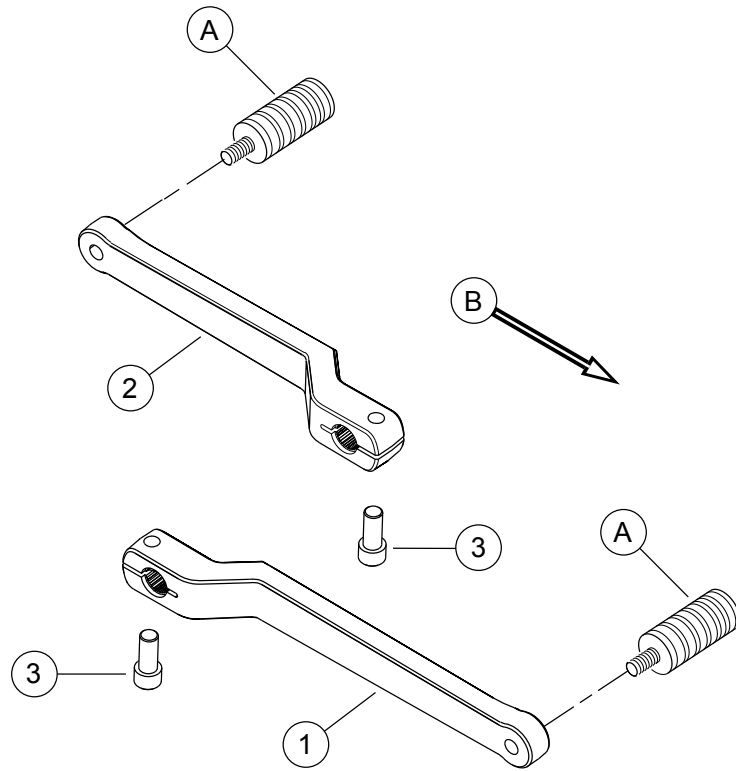


Figure 1. Service Parts: Shift Lever Kit (Generic Shown)

Table 1. Service Parts Table

Kit	Item	Description (Quantity)	Part Number
Kit 34023-08 Billet (black)	1	Toe shift lever (black)	Not sold separately
	2	Heel shift lever (black)	Not sold separately
	3	Hex socket head cap screw (2)	94332-91T
Kit 34535-00B Billet (chrome)	1	Toe shift lever (chrome)	Not sold separately
	2	Heel shift lever (chrome)	Not sold separately
	3	Hex socket head cap screw (2)	94332-91T
Kit 34558-05A Buckshot	1	Toe shift lever	33742-05A
	2	Heel shift lever	33747-07
	3	Hex socket head cap screw (2)	94332-91T
Kit 34045-10 Edge cut	1	Toe shift lever	Not sold separately
	2	Heel shift lever	Not sold separately
	3	Hex socket head cap screw (2)	94332-91T
Kit 33600076 Airflow	1	Toe shift lever	33600060
	2	Heel shift lever	33600061
	3	Hex socket head cap screw (2)	3275
Items mentioned in text, but not included in kit:			
	A	Shifter peg (2)	
	B	Front of motorcycle	