



# INSTRUCTIONS

-J03920

REV. 2006-07-07

## CYLINDER BASE COVER KIT

### GENERAL

#### Kit Number

32077-07, 32042-07

#### Models

For the most up-to-date model fitment information, please see the product label or [www.harley-davidson.com](http://www.harley-davidson.com).

### WARNING

The rider's safety depends upon the correct installation of this kit. Use the appropriate service manual procedures. If the procedure is not within your capabilities or you do not have the correct tools, have a Harley-Davidson dealer perform the installation. Improper installation of this kit could result in death or serious injury. (00333a)

#### NOTE

This instruction sheet references Service Manual information. A Service Manual for your model motorcycle is required for installation and is available from a Harley-Davidson Dealer.

#### Kit Contents

See Figure 2 and Table 1.

There are no Service Parts available with this kit.

### INSTALLATION

1. See Figure 1. Disassemble shifter linkage assembly (1). Refer to the applicable Service Manual for the proper disassembly procedure.
2. Remove the 5/16 inch crankcase screw (2) centered between the cylinders as shown. Discard screw.
3. See Figure 2. Obtain the cylinder base cover spacer (2) and 5/16-18 socket head cap screw (4) from kit.
4. Insert the screw into the counterbored side of spacer.
5. Loosely install the screw into the engine case. Rotate the spacer so that the 1/4-20 tapped hole is at the 6 o'clock position.
6. Obtain the cylinder base cover (1) from kit.

7. Temporarily position the cover and align the cylinder base cover hole with the spacer hole. If necessary, rotate the spacer slightly to achieve the best cover fit along the primary.
8. Remove the cover and grasp the sides of the spacer with an open end wrench to maintain its position. Tighten screw to 15-19 ft-lbs (Nm).
9. Obtain rubber caps (3) from kit.
10. Install rubber caps over remaining engine case hex flange screws that will be hidden by the installed cylinder base cover.
11. Install the cylinder base cover using 1/4-20 x 3/8 inch button head cap screw (5). Tighten to 80-100 in-lbs (9.0-11.0 Nm).
12. See Figure 1. Reassemble the shifter linkage assembly (1). Refer to the applicable Service Manual for the proper assembly procedure.

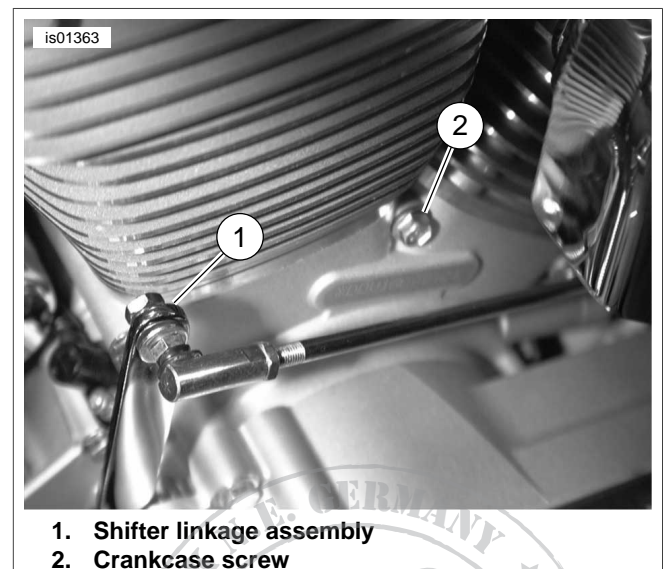
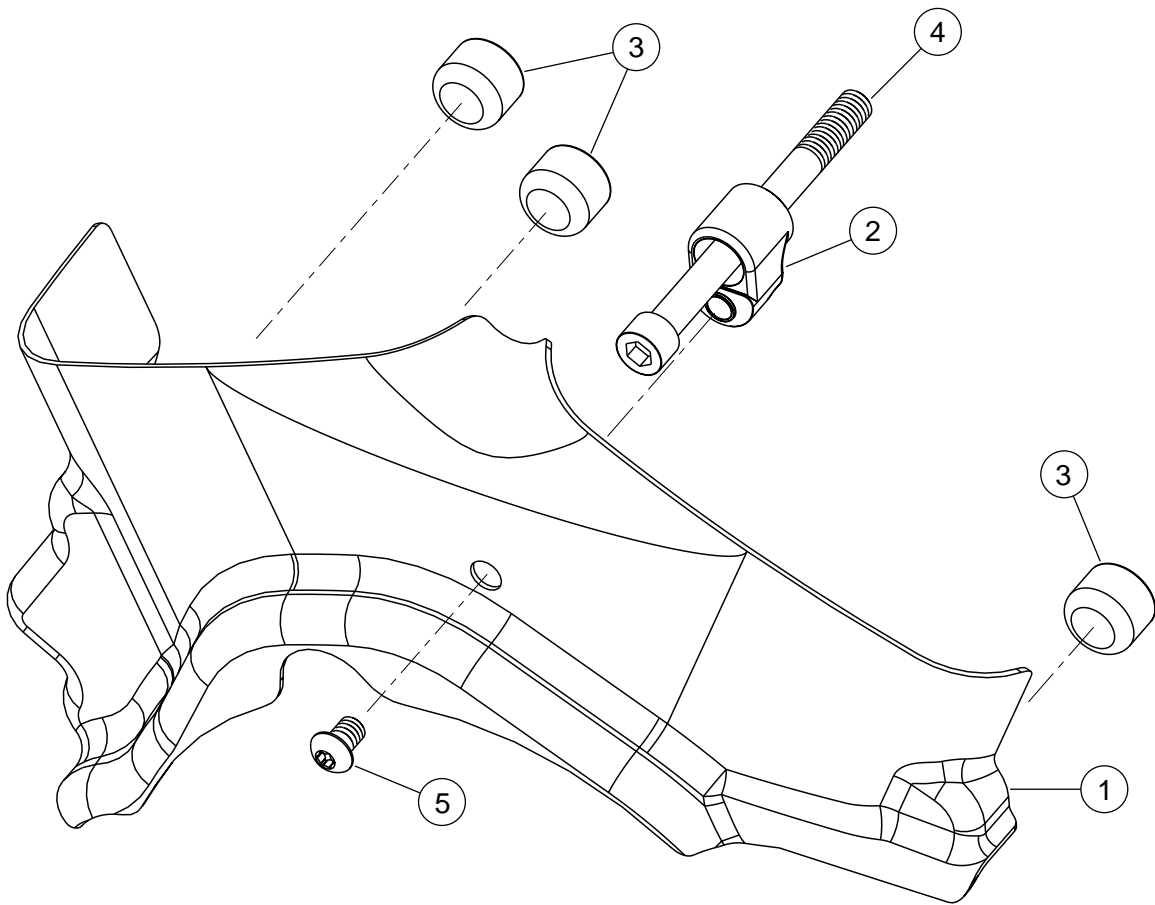


Figure 1. Disassemble shifter linkage and remove crankcase screw

# SERVICE PARTS

is02963



**Figure 2. Service Parts: Cylinder Base Cover Kit**

**Table 1. Service Parts Table**

Item	Description (Quantity)	Part Number
1	Cylinder base cover	Not Sold Separately
2	Spacer, cylinder base cover	Not Sold Separately
3	Cap, rubber (3)	Not Sold Separately
4	Screw, hex socket head cap, 5/16-18 x 3-1/2 inch	Not Sold Separately
5	Screw, button head Torx, 1/4-20 x 3/8 inch	Not Sold Separately

