



# INSTRUCTIONS

-J04280

REV. 2009-06-04

## HIGH PERFORMANCE 1.4KW STARTER

### GENERAL

#### Kit Number

31619-06A (Black), 31621-06A (Chrome)

#### Models

This kit fits 2006 and later Dyna, and 2007 and later Softail and Touring model motorcycles.

#### Service Manual Required

#### WARNING

The rider's safety depends upon the correct installation of this kit. Use the appropriate service manual procedures. If the procedure is not within your capabilities or you do not have the correct tools, have a Harley-Davidson dealer perform the installation. Improper installation of this kit could result in death or serious injury. (00333a)

#### NOTE

This instruction sheet refers to service manual information. A service manual for this year/model motorcycle is required for this installation and is available from a Harley-Davidson dealer.

#### Kit Contents

See Figure 1, Table 1 and Table 2.

### PREPARATION

#### NOTE

Remove and replace the starter when the engine is cool.

#### WARNING

To prevent accidental vehicle start-up, which could cause death or serious injury, disconnect battery cables (negative (-) cable first) before proceeding. (00307a)

#### WARNING

Disconnect negative (-) battery cable first. If positive (+) cable should contact ground with negative (-) cable connected, the resulting sparks can cause a battery explosion, which could result in death or serious injury. (00049a)

#### NOTE

**AFTER disconnecting the negative (-) battery cable, disconnect the positive (+) battery cable and main fuse power wire at the starter.**

1. Refer to the service manual and follow the instructions given to remove the seat and disconnect the battery cables, negative (-) cable first. Retain all seat mounting hardware.
2. Remove the currently installed starter per the instructions in the service manual.

### INSTALLATION

1. Follow the instructions in the service manual to install the new starter using the hardware removed earlier.

#### NOTE

Verify that the ignition key switch is in the OFF position **before** attaching the battery cables.

2. Apply a light coat of Harley-Davidson electrical contact lubricant (H-D Part No. 99861-02), petroleum jelly or corrosion retardant material to the battery terminals. Refer to the service manual and follow the instructions given to attach the battery cables (positive cable first).

#### WARNING

Connect positive (+) battery cable first. If positive (+) cable should contact ground with negative (-) cable connected, the resulting sparks can cause a battery explosion, which could result in death or serious injury. (00068a)

#### WARNING

After installing seat, pull upward on seat to be sure it is locked in position. While riding, a loose seat can shift causing loss of control, which could result in death or serious injury. (00070b)

3. Refer to the service manual, and follow instructions to install the seat.

# SERVICE PARTS

is06201

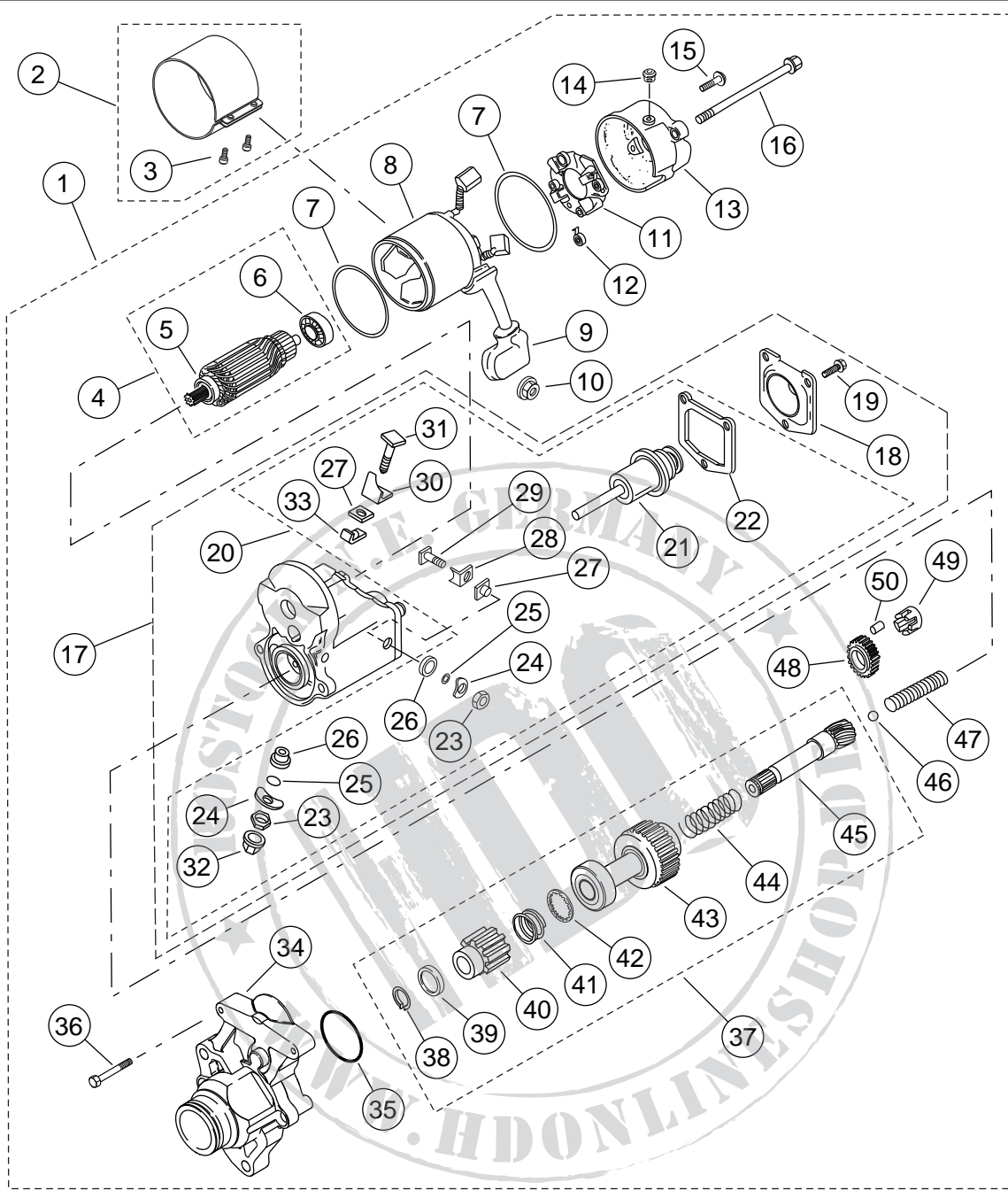


Figure 1. Service Parts, High Performance 1.4 kW Starter

Table 1. High Performance 1.4 kW Starter Kits

Kit	Item	Description (Quantity)	Part Number
31619-06A, 1.4 kW Starter (Black)	1	Starter, 1.4 kW (See Table 2 for serviced parts)	Not sold separately
31621-06A, 1.4 kW Starter (Chrome)	1	Starter, 1.4 kW (See Table 2 for serviced parts)	Not sold separately
	2	Cover, starter yoke (chrome)	Not sold separately
	3	• Screw, M4-0.7 x 0.394 in. (10 mm) long (2)	Not sold separately

## SERVICE PARTS

Table 2. Service Parts, High Performance 1.4 kW Starter

Item	Description (Quantity)	Part Number
4	Armature assembly, 1.4 kW starter (includes items 5 and 6)	Not sold separately
5	• Ball bearing	8871
6	• Ball bearing	8883
7	O-ring, starter yoke (2)	31695-90
8	Starter yoke (field coil)	Not sold separately
9	Terminal cap, rubber	31643-06
10	Flange nut	3403
11	Holder assembly, starter brush (includes item 12)	31542-06
12	• Spring, starter brush (4)	Not sold separately
13	End frame, starter	31508-06
14	Drain vent	31660-90
15	Screw (2)	929A
16	Through bolt, unfinished (2), for black starter 31619-06A Through bolt, chrome (2), for chrome starter 31621-06A	Not sold separately 3624
17	Starter solenoid assembly (includes items 18 through 20)	31631-06
18	• Solenoid cover	31688-90
19	• Bolt, with washer (3)	31689-90
20	• Starter repair kit (includes items 21 through 33)	31604-06
21	• Plunger subassembly	Not sold separately
22	• Gasket	Not sold separately
23	• Jam nut (2)	Not sold separately
24	• Wave washer (2)	Not sold separately
25	• O-ring (2)	Not sold separately
26	• Bushing, round (2)	Not sold separately
27	• Bushing, square (2)	Not sold separately
28	• Contact plate	Not sold separately
29	• Bolt, "B" terminal	Not sold separately
30	• Contact plate	Not sold separately
31	• Bolt, "M" terminal	Not sold separately
32	• Nut	Not sold separately
33	• Washer	Not sold separately
34	Starter housing	Not sold separately
35	O-ring	10957
36	Bolt, starter (2)	928
37	Clutch subassembly, starter (includes items 38 through 45)	31633-07
38	• Snap ring	31328-91
39	• Pinion stop nut	Not sold separately
40	• Starter pinion gear	31345-06
41	• Spring, compression coil	Not sold separately
42	• Snap retainer	Not sold separately
43	• Clutch, starter motor (includes ball bearing, not sold separately)	31681-07
44	• Spring, starter solenoid	31692-90
45	• Shaft	Not sold separately
46	Ball	8879

**Table 2. Service Parts, High Performance 1.4 kW Starter**

<b>Item</b>	<b>Description (Quantity)</b>	<b>Part Number</b>
47	Starter solenoid return spring	31641-06
48	Idler gear	31525-90
49	Idler retainer	31530-90
50	Clutch roller (5)	9077

