



# INSTRUCTIONS

-J03942

REV. 2008-08-25

## SCREAMIN EAGLE STAGE 1 KIT FOR EFI MODELS

### GENERAL

#### Kit Number

29782-07

#### Models

For model fitment information, see the P&A Retail Catalog or the Parts and Accessories section of [www.harley-davidson.com](http://www.harley-davidson.com)

#### Additional Parts Required

Proper installation of this kit requires the use of Digital Technician® at a Harley-Davidson dealer.

#### ⚠ WARNING

The rider's safety depends upon the correct installation of this kit. Use the appropriate service manual procedures. If the procedure is not within your capabilities or you do not have the correct tools, have a Harley-Davidson dealer perform the installation. Improper installation of this kit could result in death or serious injury. (00333a)

#### NOTE

This instruction sheet references service manual information. A service manual for your model motorcycle is required for this installation and is available from a Harley-Davidson dealer.

#### Kit Contents

See Figure 1 and Table 1.

#### NOTES

Installation of this kit by an authorized Harley-Davidson dealer will not impact your limited vehicle warranty.

This Stage 1 kit is intended for High Performance applications only. This engine related performance part is legal for sale or use in California on pollution controlled motor vehicles. Engine related performance parts are intended for the experienced rider only.

The Product Information Label contained in this kit is a requirement of the California Air Resource Board (CARB) emission regulation. Place the label on the right side of the frame directly beneath the VIN sticker. This label is not required outside the state of California.

Product Identification labels are required for 2007 models, but are not required for 2008 models.

The air cleaner contained in this kit is designed to perform with this kit only. Any other combination of components is not confirmed to be legal for street use.

### REMOVAL

#### ⚠ WARNING

When servicing the fuel system, do not smoke or allow open flame or sparks in the vicinity. Gasoline is extremely flammable and highly explosive, which could result in death or serious injury. (00330a)

#### NOTE

Loosen backing plate-to-carburetor screws a few turns at a time, while pulling backing plate away from carburetor, to prevent screws from engaging threads in backing plate inserts. If screws engage insert threads, the inserts may accidentally be pulled out of backing plate.

1. Remove seat according to the instructions in the service manual.

#### ⚠ WARNING

To prevent accidental vehicle start-up, which could cause death or serious injury, disconnect battery cables (negative (-) cable first) before proceeding. (00307a)

#### ⚠ WARNING

Disconnect negative (-) battery cable first. If positive (+) cable should contact ground with negative (-) cable connected, the resulting sparks can cause a battery explosion, which could result in death or serious injury. (00049a)

2. Disconnect battery cables, negative (-) cable first.
3. Remove existing air cleaner assembly. Save air cleaner cover and breather screws, but discard remaining components. Refer to the service manual.

### INSTALLATION

#### Install Air Cleaner

#### CAUTION

Install air filter before running engine. Failure to do so can draw debris into the engine and could result in engine damage. (00207a)

## ⚠ WARNING

The element in this kit is specifically designed for use with the OE (original equipment) cover. Using this kit with an air cleaner cover other than the OE cover could lead to failure of the element faceplate. The kit may be used in conjunction with other H-D accessory covers provided the appropriate adapter recommended in those kits is used. If the element faceplate fails the cover could detach possibly distracting the rider which could result in death or serious injury. (00400b)

### NOTE

When servicing the air cleaner, apply Loctite 243 (Blue) to threads of all fasteners.

1. See Figure 1. Install three screws (1) fully into backplate inserts.
2. Peel backing paper off gasket (2) and apply to carburetor side of backplate. Make sure gasket holes are lined up with backplate holes.
3. Install backplate (3) to carburetor.
  - a. Align three 1/4-20 screw holes in carburetor with matching holes in backplate.
  - b. Carefully thread three screws (1) with backplate (3) into carburetor.
  - c. Tighten screws 36-60 **in-lbs** (4.1-6.8 Nm).
4. Install attaching parts to cylinder heads.
  - a. Remove O-rings from stock breather screws (A).
  - b. Apply Loctite® 243 (Blue) to threads of screws.
  - c. Insert screws into threaded holes in front and rear cylinder head. Tighten to 10-20 ft-lbs (13.6-27.1 Nm).
  - d. Press breather hoses (4) over breather screws (A) and position outlet into guides and carburetor opening.

### Install Air Cleaner Element and Cover

1. See Figure 1. Install filter element (5) to backplate.
  - a. Secure filter element using four screws (6).
  - b. Apply Loctite 243 (Blue) and tighten screws to 55-60 **in-lbs** (74.6-81.3 Nm).
2. Place air cleaner insert (7) on stock air cleaner cover (B) and install flat head screws (8).
3. Slide spacers (9) onto flat head screws (8), then install retaining rings (10) onto screw threads to secure spacers in place.
4. Position adapter cover (11) inside air cleaner cover.
5. Attach cover assembly to filter using the two flat head screws (8).
6. Tighten screws to 36-60 **in-lbs** (4.1-6.8 Nm).

## Final Assembly

## ⚠ WARNING

Connect positive (+) battery cable first. If positive (+) cable should contact ground with negative (-) cable connected, the resulting sparks can cause a battery explosion, which could result in death or serious injury. (00068a)

1. Connect battery cables, positive (+) cable first.
2. Install seat according to the instructions in the service manual.

## ⚠ WARNING

After installing seat, pull upward on seat to be sure it is locked in position. While riding, a loose seat can shift causing loss of control, which could result in death or serious injury. (00070b)

## CAUTION

You must recalibrate the ECM when installing this kit. Failure to properly recalibrate the ECM can result in severe engine damage. (00399b)

Download the new ECM calibration using the Digital Technician at a Harley-Davidson dealer. Applies to models equipped with EFI only.

## MAINTENANCE

### Air Cleaner Element Maintenance

#### NOTES

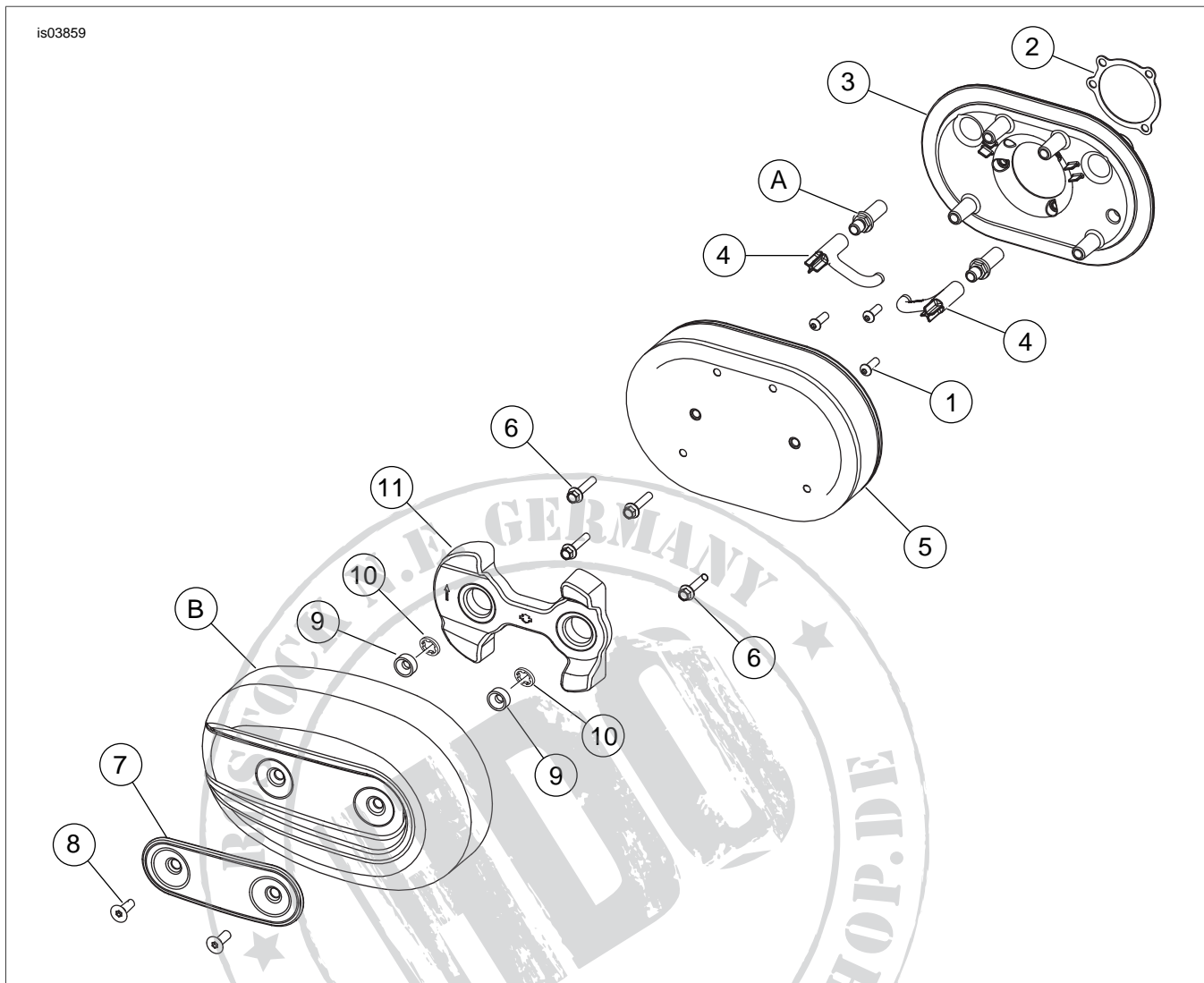
*This is a dry air filter. Do not apply oil to the filter element.*

*Do not dry with compressed air.*

1. See Figure 1. Remove air cleaner cover (B) and inspect the filter element (5) every 5000 mi (8000 km), or more often under dusty conditions.
2. Remove filter element from air cleaner assembly.
3. Clean filter element as follows:
  - a. *Spray Element:* Tap element and brush with a soft bristle brush. Spray element with Air Filter Cleaner (99883-88T).
  - Immerse Element:* Immerse element in an upright position (on its end) in a pan containing a shallow amount (3/4 the depth of filter pleats) of Air Filter Cleaner (99883-88T) or soapy water. Carefully "roll" the element within the solution along its perimeter until the entire outer surface of the filter pleats has been soaked. *Do not let dirty solution run to inside of filter.*
  - b. Set element aside for ten minutes to dissolve dirt.
  - c. From the inside out, rinse the filter element with cold water.
  - d. Shake off excess water and air dry.
4. Install air cleaner element and cover.

# SERVICE PARTS

is03859



**Figure 1. Service Parts: Screamin' Eagle Stage 1 Kit for EFI Models**

**Table 1. Service Parts: Screamin' Eagle Stage 1 Kit for EFI Models**

Item	Description (Quantity)	Part Number
1	Screw, button head 1/4-20 x 3/4 inch (3)	864A
2	Gasket, carburetor inlet	29268-03Y
3	Backplate	29048-07
4	Hose, breather (2)	63520-04
5	Element, filter	29044-04B
6	Screw, hex flange 1/4-20 x 1-1/4 inch (4)	3643
7	Insert, air cleaner	29051-04
8	Screw, flat head chrome 5/16-18 x 7/8 inch (2)	2818
9	Spacer (2)	31507-04A
10	Retaining ring (2)	62894-04
11	Adapter, cover	29047-04
12	Product information label (not shown)	Not Sold Separately
13	Loctite 243 (Blue), 0.5 ml packet (not shown)	Not Sold Separately

**Table 1. Service Parts: Screamin' Eagle Stage 1 Kit for EFI Models**

Item	Description (Quantity)	Part Number
<b>Original equipment mentioned in text, but not included in kit:</b>		
A	Breather screw	
B	Air cleaner cover	
Note: Loctite (Item 13) is only available in 6 ml tube, (99642-97).		

