



INSTRUCTIONS

-J01978

2008-12-03

BILLET AIR CLEANER COVER KIT

GENERAL

Kit Number

29745-00, 29745-00A, 29506-09

Models

For model fitment information, see the P&A Retail Catalog or the Parts and Accessories section of www.harley-davidson.com (English only).

Additional Parts Required

See Figure 1.

Kit 29745-00 will not fit with later style backplates (2).

Kits 29745-00A and 29506-09 can be used with either earlier style (1) or later style (2) backplates.

▲ WARNING

The rider's safety depends upon the correct installation of this kit. If the procedure is not within your capabilities or you do not have the correct tools, have a Harley-Davidson dealer perform the installation. Improper installation of this kit could result in death or serious injury. (00308a)

Kit Contents

See Figure 4 and Table 1.

Additional Parts Required

See Figure 2. If the Screamin' Eagle® High Flow Air Cleaner Kit came with one-piece mounting studs (1), they must be replaced with new two-piece studs (2). These studs are available from a Harley-Davidson dealer.

Separate purchase of LOCTITE® 243 Threadlocker and Sealant - Blue (99642-97) is required for proper installation of this kit. LOCTITE can be purchased from any Harley-Davidson Dealer.

Proper installation of this kit will also require the separate purchase of Billet Air Cleaner Medallion kits. See the P&A Retail Catalog or the Parts and Accessories section of www.harley-davidson.com.

These items are available separately from any Harley-Davidson dealer. Also available are the following Billet Air Cleaner Side Insert kits, which can be installed in place of the brushed aluminum side inserts provided in this kit:

- Black finish (97005-02)
- Plain (for color matching) (97002-02)

INSTALLATION

NOTE

Installation of this air cleaner cover requires the use of two-piece mounting studs. Failure to use two-piece studs can

result in air cleaner assembly coming loose and loss of vehicle control, which could result in death or serious injury.

1. Remove and discard the existing air cleaner cover screw and cover.

▲ WARNING

Installation of air cleaner cover requires the use of two-piece mounting studs. Failure to use two-piece studs can cause air cleaner assembly to come loose and distract the rider, which can lead to loss of control and could result in death or serious injury. (00594b)

NOTE

See Figure 1. Earlier style backplates (1) have two small mounting ears, which fit into shallow grooves (Figure 4, item C) in the air cleaner cover from either kit. Later style backplates (2) have two larger mounting bosses (Figure 4, item B), which fit into notches found only in the cover from Kit 29745-00A.

2. See Figure 2. If the Screamin' Eagle High Flow Air Cleaner came with one-piece studs, remove the filter element and studs. Replace with new two-piece studs (29447-99A), purchased separately.
3. **For Twin Cam Engines:** Apply a few drops of Loctite 243 to the threads of the the air cleaner cover screw (2) and install the screw through the hole in the air cleaner cover (1), and secure the cover to the air cleaner. Tighten the screw to 4–7 N·m (3–5 ft-lbs).
4. **For Evolution Engines:** Apply a few drops of Loctite 243 to the threads of the the air cleaner cover screw (2) and install the screw through the center hole in the air cleaner cover (1). Install the spacer (3) between the cover and air cleaner, and secure the cover to the air cleaner. Tighten the screw to 4–7 N·m (3–5 ft-lbs).
5. Install the air cleaner center medallion (A) as described in the instructions provided with that kit.
6. Use isopropyl alcohol to thoroughly clean the surfaces of the wing areas of the new air cleaner cover where the side inserts (4 and 5) will be installed, and the top surface of the cover where the label (6) will be affixed. Allow the cleaned areas to dry thoroughly.
7. Facing the air cleaner cover from the right side of the vehicle, remove the adhesive backing from the left side insert (4) and carefully position it to the air cleaner cover. Apply pressure to the insert for one minute.

NOTE

Apply the warning label so the top is toward the motorcycle.

-J01978



Many Harley-Davidson® Parts & Accessories are made of plastics and metals which can be recycled. Please dispose of materials responsibly.

1 / 2

8. Repeat Step 6 with the right side insert (5).
9. Remove the adhesive backing from the warning label (6) and apply to the top surface of the installed air cleaner cover.

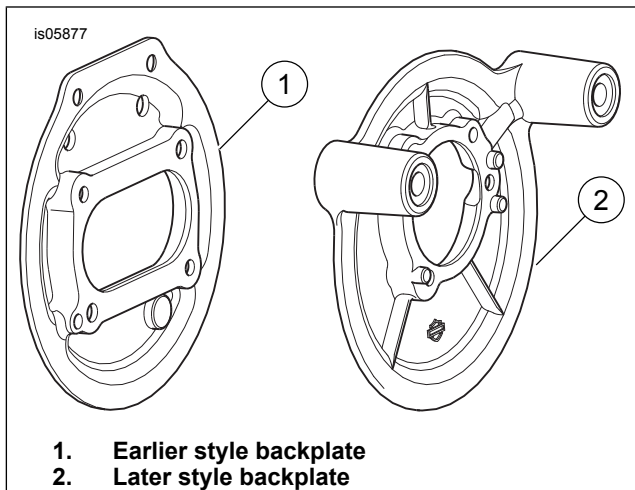


Figure 1. Air Cleaner Backplate Identification

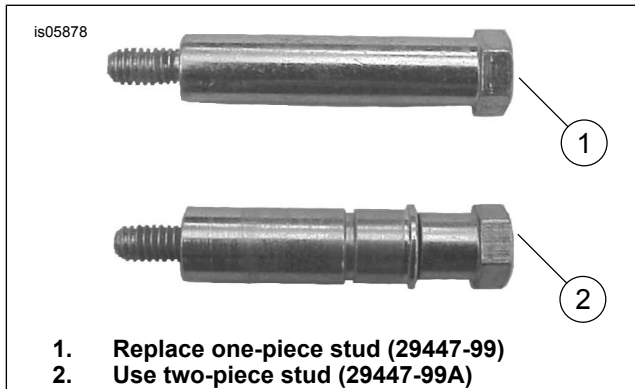


Figure 2. Use Two-Piece Studs

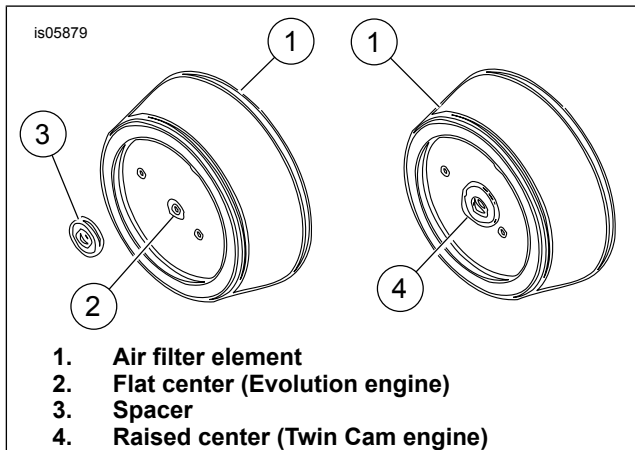


Figure 3. High-Flow Air Filter Elements

SERVICE PARTS

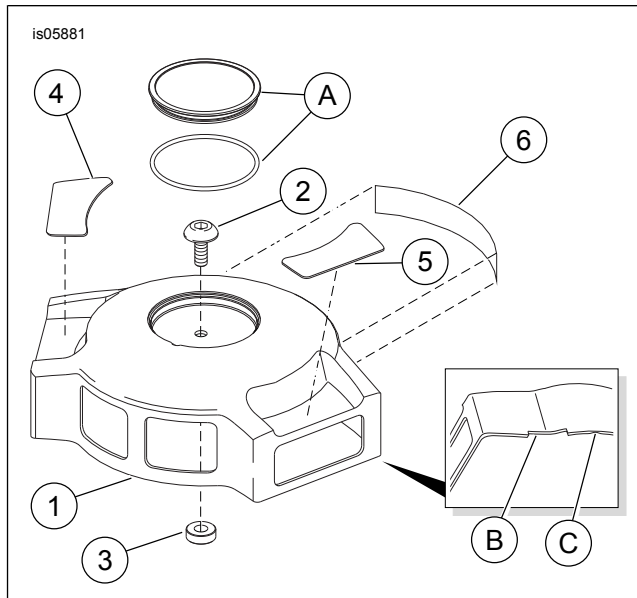


Figure 4. Service Parts: Billet Air Cleaner Cover Kit

Table 1. Service Parts

Item	Description (Quantity)	Part Number
1	Cover air cleaner	Not Sold Separately
2	Screw, hex socket	29283-93
3	Spacer (for Evolution engines)	52103-31
4	Insert, brushed aluminum (left)	99696-00
	Insert, gloss black (left)	97006-02
5	Insert, brushed aluminum (right)	99697-00
	Insert, gloss black (right)	97007-02
6	Label, personal safety warning (for kits 29745-00, 29745-00A)	29127-95A
	Label, personal safety warning (for kit 29506-09)	29404-01A
Items mentioned in text, but not included in kit.		
A	Billet Air Cleaner Medallion Kit (purchased separately)	
B	Notch (2) for later backplate (Kit 29745-00A cover only)	
C	Groove (2) for earlier backplate	