



INSTRUCTIONS

-J05942

2014-06-13

SCREAMIN' EAGLE AIR CLEANER KIT

GENERAL

Kit Numbers

29400197

Models

For model fitment information, See the P&A Retail Catalog or the Parts and Accessories section of www.harley-davidson.com (English only).

Installation Requirements

▲ WARNING

The rider's safety depends upon the correct installation of this kit. Use the appropriate service manual procedures. If the procedure is not within your capabilities or you do not have the correct tools, have a Harley-Davidson dealer perform the installation. Improper installation of this kit could result in death or serious injury. (00333a)

This instruction sheet references service manual information. A service manual for your model motorcycle is required for this installation. One is available from a Harley-Davidson dealer.

Kit Contents

See Figure 2 and Table 1.

NOTE

The kit is intended for High Performance applications only. Engine related performance parts are intended for **THE EXPERIENCED RIDER ONLY**.

NOTE

Installation of this kit by an authorized Harley-Davidson dealer will not impact your limited vehicle warranty.

The kit is intended for High Performance applications only. This engine-related performance part is legal for sale or use in California on pollution controlled motor vehicles.

The Product Information Label contained in this kit is a requirement of the California Air Resource Board (CARB) emission regulations.

Place the label on the right side of the frame directly beneath the VIN sticker. This label is not required outside the state of California.

REMOVAL

▲ WARNING

To prevent accidental vehicle start-up, which could cause death or serious injury, remove main fuse before proceeding. (00251b)

1. See the service manual. Remove main fuse.

2. See Figure 1. See the service manual. Remove original equipment (OE) air cleaner components including backplate (7). Discard filter element (6).
3. Carefully remove and discard the original air cleaner cover insert from air cleaner cover (2). Remove any residual adhesive on the cover with mineral spirits.
4. To verify surface cleanliness, clean the insert area with a mixture of 50-70% isopropyl alcohol and 30-50% distilled water. Allow to dry completely.

INSTALLATION

Install Air Cleaner

1. See Figure 2. Install original backplate (F) and screw retainer plate (5).
 - a. Secure screw retainer plate and OE backplate to throttle body with OE screws (E).
 - b. Secure screw retainer plate and OE backplate to engine crankcase with OE screws (E).
 - c. Tighten to 5–7 N·m (45–62 in-lbs).

NOTE

Verify seal washers (G) are in good condition. Replace parts if necessary.

- d. Bend tabs of retainer over screw heads.
2. Install filter.
 - a. Assemble plate (4), filter element (3) and retainer (2).
 - b. Install assembly onto backplate studs.
 - c. Secure with original bracket (D) and nuts (C). Tighten to 6–8 N·m (54–70 in-lbs).
 3. Install cover (B) using original screw (A). Tighten to 6–8 N·m (54–70 in-lbs).
 4. Peel liner from adhesive backing of air cleaner cover insert (1). Position insert over air cleaner cover (B) without touching adhesive on cover surface. Line up insert with recess in air cleaner cover and orient as desired.

NOTE

Allow at least 24 hours after applying the insert before exposing the area to vigorous washing, strong water spray or extreme weather. The adhesive bond will increase to maximum strength after about 72 hours at normal room temperatures

5. Press air cleaner cover insert firmly against the cover all around, and hold pressure for 30 seconds. After releasing pressure, avoid direct contact with the insert for about 20 minutes.
6. Install main fuse. Refer to the service manual.

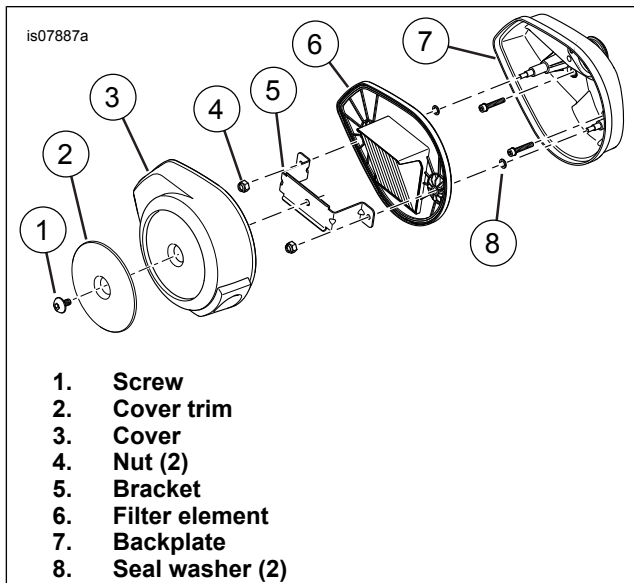


Figure 1. Original Air Cleaner

Air Filter Element Maintenance

NOTE

- The use of cleaning, drying or oiling methods or products other than those shown will damage the filter and void the manufacturer's warranty
- K&N® Air filter Cleaner is available from a Harley-Davidson dealer, either alone 0.95 L (1 qt) sprayer bottle (Part No. 99883-88T) or a 0.35 L (12 fl oz) sprayer bottle as part of the Filter Care Service Kit (Part No. 99850-92T).
- K&N Air Filter Oil is also available from a Harley-Davidson dealer, either alone 347 g (12.25 oz) aerosol can (Part No. 99882-88T) or a 184 g (6.5 oz) aerosol can as part of the Filter Care Service Kit.
- **DO NOT OVER-OIL THE AIR FILTER.** Over-oiling may interfere with the proper performance of the engine and/or certain engine components. If oil is still draining or dripping from the filter media 20 minutes after oiling, clean and oil the filter element again.

1. Inspect the air filter element every 8,000 km (5000 mi) or more often under dusty conditions.
2. To clean the element:
 - a. Remove air cleaner cover.
 - b. Remove air filter retainer and element.
 - c. Tap the element to dislodge any loose dirt. Gently brush with a soft bristle brush.
 - d. Spray air filter cleaner liberally onto the cotton filter media and let soak for ten minutes OR roll and soak the cotton filter media in a shallow pan of air filter cleaner. Remove immediately, and let soak for ten minutes.
 - e. Rinse off the filter media (flowing from the **clean** side to the dirty side), with low-pressure tap water.
 - f. After rinsing, shake off all excess water, and let the filter media air dry. **DO NOT** use compressed air or a heat gun to speed drying.

NOTE

See Figure 2. Verify seal washers (G) are in place and in good condition.

- g. After the filter media is **completely** dry, EITHER spray air filter oil along each pleat, once only, holding the spray nozzle approximately 76 mm (3 in) away from the media, OR carefully use a squeeze bottle to deposit oil along each pleat, once only. **Let the oil absorb into the filter media for 20 minutes before proceeding.** After 20 minutes, inspect the filter media. Carefully apply oil to any remaining visible white spots on the filter media. Allow to absorb.
3. See Figure 2. Install filter and retainer. Install with original bracket (D) and nuts (C). Tighten to 6–8 N·m (54–70 in-lbs).
4. Install cover and cover trim. Tighten to 6–8 N·m (54–70 in-lbs).

Service Parts

291965

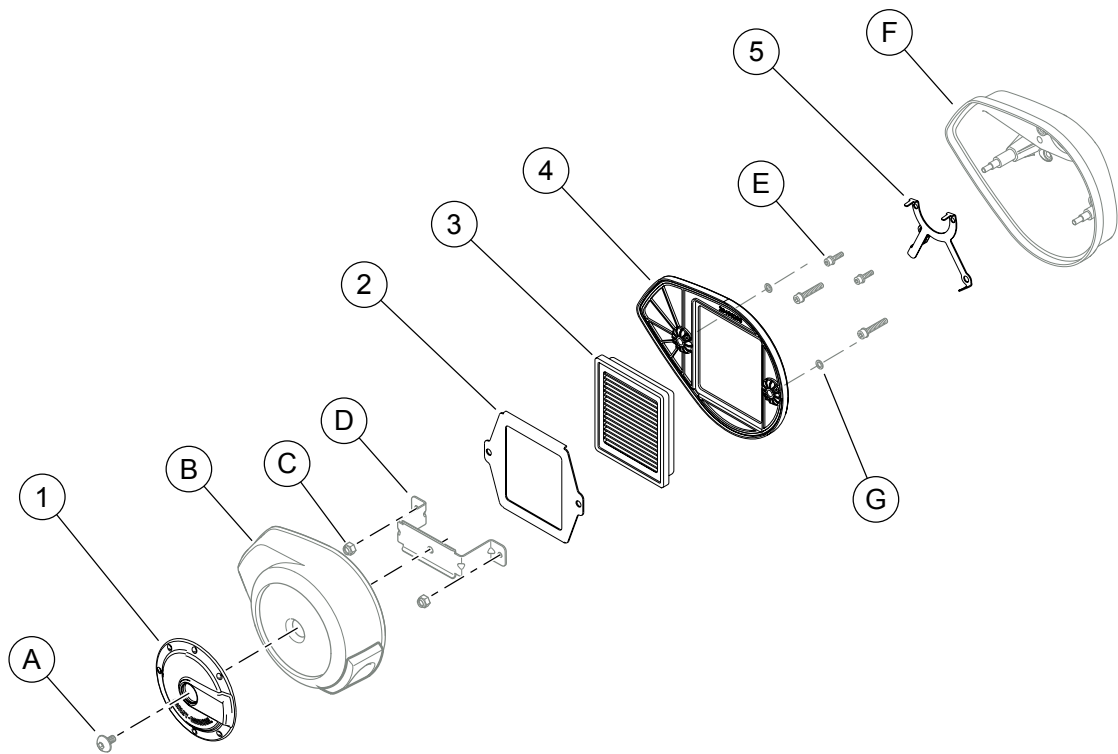


Figure 2. Service Parts: Screamin' Eagle Air Cleaner Kit

Table 1. Kit Contents

Item	Description (Quantity)	Part Number	Item	Description (Quantity)
1	Cover trim	61300364		Items mentioned but not included in kit
2	Retainer	not serviced separately	A	Screw
3	Filter element	29400209	B	Cover, air cleaner
4	Plate	not serviced separately	C	Nut (2)
5	Retainer plate	60900019	D	Bracket
			E	Screws, backplate (2 short; 2 long)
			F	Backplate
			G	Seal washers