



INSTRUCTIONS

-J05628

2012-06-04

SCREAMIN' EAGLE PERFORMANCE 64MM EFI INTAKE MANIFOLD

GENERAL

Kit Number

27300052

Models

For model fitment information, see the P&A Retail Catalog or the Parts and Accessories section of www.harley-davidson.com (English only).

NOTE

This Screamin' Eagle performance intake manifold kit is intended for high performance applications only.

This manifold has intake runners which are 0.100 inch larger in diameter than all stock Twin Cam heads and early Screamin' Eagle performance cylinder heads. The intake port diameter in the cylinder heads should be 1.750 inch. If not, an experienced engine builder can open the cylinder head ports to this diameter to be sure of a smooth transition and air-flow.

Additionally, the larger intake flanges supplied in this kit will only work with cylinder heads machined for use with the stock symmetrical intake flanges (OE since model year 2006).

All Screamin' Eagle performance cylinder heads (except Kompressor) with kit part number extension of -06 or later have a intake port diameter of 1.750 inch and are machined for use with symmetrical intake flanges.

This engine related performance part is not legal for use on pollution controlled motor vehicles. This kit may reduce or void the Limited Vehicle Warranty coverage. Engine related performance parts are intended for the experienced rider only.

Additional Parts Required

The Screamin' Eagle 64mm Pro High Flow EFI Throttle Body Kit (Part Number 27300033) is required for this installation.

Optional high flow injectors are available for this EFI manifold in kit. See Screamin' Eagle Pro Catalog.

Separate purchase and installation of additional parts or accessories may be required for proper installation of this kit on your model motorcycle.

NOTICE

You must recalibrate the ECM when installing this kit. Failure to properly recalibrate the ECM can result in severe engine damage. (00399b)

▲ WARNING

The rider's safety depends upon the correct installation of this kit. Use the appropriate service manual procedures. If the procedure is not within your capabilities or you do not have the correct tools, have a Harley-Davidson dealer perform the installation. Improper installation of this kit could result in death or serious injury. (00333a)

INSTALLATION

▲ WARNING

To prevent accidental vehicle start-up, which could cause death or serious injury, remove main fuse before proceeding. (00251b)

1. Remove main fuse.

▲ WARNING

When servicing the fuel system, do not smoke or allow open flame or sparks in the vicinity. Gasoline is extremely flammable and highly explosive, which could result in death or serious injury. (00330a)

NOTE

Clean threads of residual Loctite.

2. Remove the original equipment induction module per the instructions for your model found in the INDUCTION MODULE: REMOVAL section of the service manual. Remove fuel rail, injectors and T-MAP sensor and mounting screw. Save for transfer to new throttle body.
3. When transferring the T-MAP sensor, place a few drops of Loctite[®] 243 (Blue) on the threads of the T-MAP sensor screw. Tighten screw to 6–10 N·m (53–88 in-lbs).
4. Apply a thin coat of clean engine oil to the fuel injector O-rings.
5. Push the fuel injectors into the 64 mm intake manifold bores. Rotate the fuel injectors so that the electrical connectors are on the outboard side.

NOTE

When installing the fuel rail and injectors, the new fuel rail self-tapping TORX[®] screw (6) supplied in kit must be used and tightened to 90-110 in-lbs (10.2-12.4 Nm).

6. Push the fuel rail over the fuel injectors until the fuel rail flange contacts the boss on the intake manifold.

NOTE

Lubricate the large seal ring (4) with soapy water or a 50/50 mixture of water and isopropyl alcohol to ease installation.

7. Use the screw (6) provided in kit to fasten the fuel rail to the intake manifold. Tighten the screw to 10.2–12.4 N·m (90–110 in-lbs).
8. See the instruction sheet for the mating 64mm Pro High Flow EFI Throttle Body Kit and Figure 1. Assemble the throttle body (A) and intake manifold using the large seal ring (4) and install according to the instructions in the throttle body kit. It is recommended to pre-assemble flanges and seals (items 2 and 3) to manifold, in orientation shown, before induction system is mated to cylinder heads.
9. Install main fuse.

SERVICE PARTS

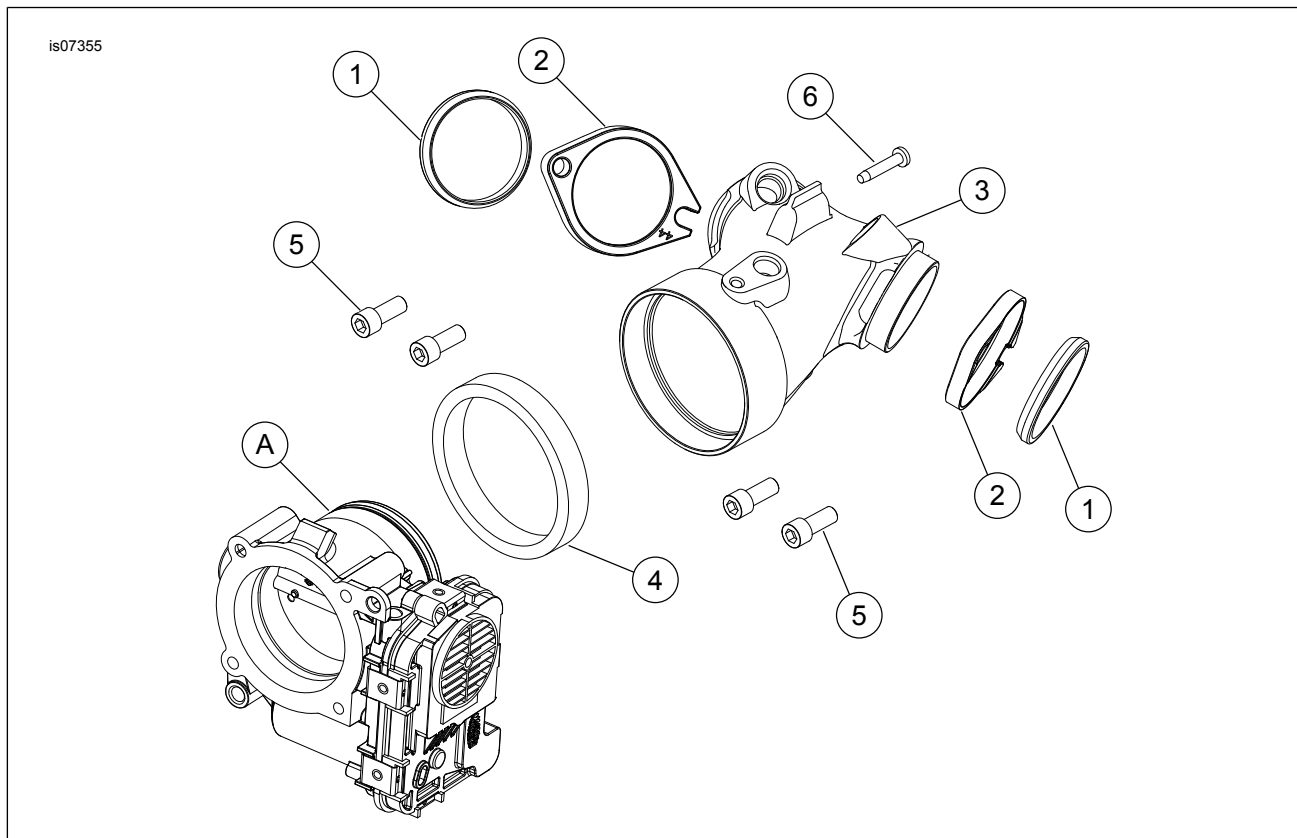


Figure 1. Service Parts: 64mm EFI Intake Manifold

Table 1. Service Parts Table

Item	Description (Quantity)	Part Number
1	Manifold intake seal (2)	27035-05
2	Manifold mounting flange (2)	27059-05A
3	Intake manifold, EFI, 64 mm, ETC	Not Sold Separately
4	Manifold seal ring	27300038
5	Hex head cap screw (4)	3201WA
6	TORX® screw, self-tap M5 x 0.8 w/lockpatch	2743
Items mentioned in text, but not included in kit:		
A	64 mm throttle body assembly, ETC	
B	Fuel injectors and fuel rail assembly (not shown)	