



INSTRUCTIONS

-J06163

2014-11-12

SCREAMIN' EAGLE HIGH FLOW 58MM EFI INDUCTION MODULE

GENERAL

Kit Number

27200029

Models

For model fitment information, see the P&A retail catalog or the Parts and Accessories section of www.harley-davidson.com (English only).

NOTE

- The kit is intended for High Performance applications only. Engine-related performance parts are intended FOR THE EXPERIENCED RIDER ONLY. Installation of this kit by an authorized Harley-Davidson dealer does not affect your limited vehicle warranty.
- This engine-related performance part is legal for sale or use in California on pollution controlled motor vehicles. The Product Information Label contained in this kit is a requirement of the California Air Resource Board (CARB) emission regulation. Place the label on the right side of the frame directly beneath the VIN sticker. This label is not required outside the state of California.

NOTICE

You must recalibrate the ECM when installing this kit. Failure to properly recalibrate the ECM can result in severe engine damage. (00399b)

NOTE

ECM recalibration is required. See a Harley-Davidson dealer.

Installation Requirements

Proper installation of this kit requires the use of Digital Technician[®] by a factory-trained technician at a Harley-Davidson dealer.

Loctite[®] 243 Medium Strength Threadlocker and Sealant - Blue (Part No. 99642-97) is required for proper installation of this kit.

⚠ WARNING

The rider's safety depends upon the correct installation of this kit. Use the appropriate service manual procedures. If the procedure is not within your capabilities or you do not have the correct tools, have a Harley-Davidson dealer perform the installation. Improper installation of this kit could result in death or serious injury. (00333a)

NOTE

This instruction sheet refers to service manual information. A service manual for this year/model motorcycle is required for this installation. One is available from a Harley-Davidson dealer.

Kit Contents

See Figure 1 and Table 1.

PREPARATION

NOTE

For vehicles equipped with security siren:

- **2007 and later:** With security fob present, turn ignition switch ON.
- **2006 and earlier:** Disarm the siren with the key fob.

ALL years: After system is disarmed, turn ignition switch OFF.

⚠ WARNING

To prevent spray of fuel, purge system of high-pressure fuel before supply line is disconnected. Gasoline is extremely flammable and highly explosive, which could result in death or serious injury. (00275a)

1. See the service manual. Purge and disconnect fuel supply line. Remove fuel supply line.

⚠ WARNING

To prevent accidental vehicle start-up, which could cause death or serious injury, remove main fuse before proceeding. (00251b)

2. See the service manual. Remove main fuse.
3. Remove seat. Retain the seat and all mounting hardware.

INSTALLATION

⚠ WARNING

When servicing the fuel system, do not smoke or allow open flame or sparks in the vicinity. Gasoline is extremely flammable and highly explosive, which could result in death or serious injury. (00330a)

1. Remove the original equipment (OE) induction module per service manual instructions for this model. Remove fuel rail, injectors, T-MAP sensor and mounting screw. Save for transfer to new throttle body.

NOTE

Install the fuel rail and injectors with the new fuel rail self-tapping TORX[®] screw (5) from this kit. Tighten to 10.2–12.4 N·m (90–110 in-lbs).

2. When transferring the T-MAP sensor, place a few drops of Loctite[®] 243 (Blue) on the threads of the T-MAP sensor screw. Tighten screw to 6–10 N·m (53–88 in-lbs).

3. Use the **new** intake manifold seals (2) from the kit. Install the **new** induction module per the service manual, with the following exception:

- a. The two mounting flanges (1) in this kit are identical, with no need to determine the front (F) or rear (R) flange. The new flange has the number "44" embossed on the side facing the intake manifold.

4. See the service manual. Install main fuse.

⚠ WARNING

After installing seat, pull upward on seat to be sure it is locked in position. While riding, a loose seat can shift causing loss of control, which could result in death or serious injury. (00070b)

5. Install seat. See the service manual.

SERVICE PARTS

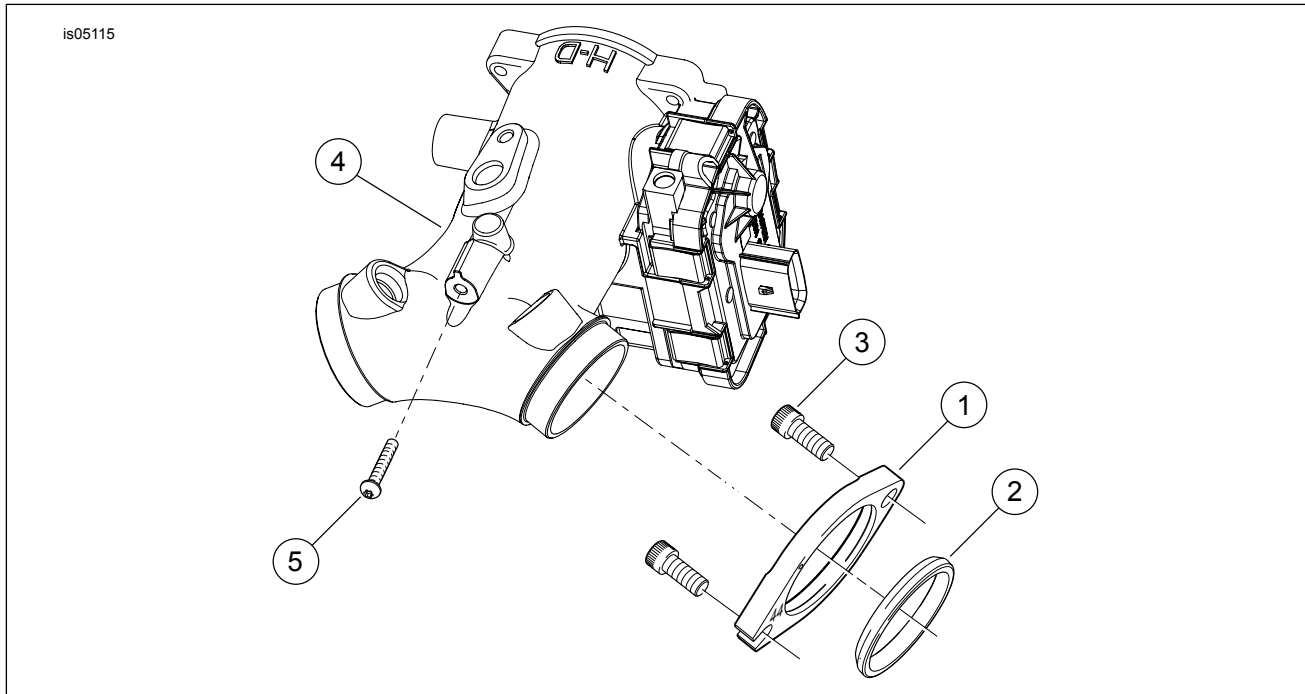


Figure 1. Service Parts: Induction Module Assembly

Table 1. Service Parts

Item	Description (Quantity)	Part Number
1	Flange, mounting. intake manifold, 44mm (2)	27059-05A
2	Seal, intake manifold, 44mm (2)	27035-05
3	Cap screw, hex socket head (4)	3201WA
4	Induction module assembly, 58mm	Not sold separately
5	Button Head TORX screw, self-tapping (for fuel rail)	Not sold separately