



INSTRUCTIONS

-J04325

REV. 2006-11-22

105TH ANNIVERSARY DERBY COVER

GENERAL

Kit Number

25561-08

Models

For model fitment information, please see the P&A Retail Catalog or the Parts and Accessories section of www.harley-davidson.com (English only).

Additional Parts Required

Installation on 2006 and later Dyna and 2007 and later Softail and Touring models requires separate purchase of gasket, Part Number 25416-99C.

Kit Contents

See Figure 2 and Table 1.

INSTALLATION

For models equipped with left side exhaust pipe:

WARNING

Perform this installation when the engine is cool. Working on or near the exhaust system when the engine is hot could result in severe burns. (00311a)

NOTE

Remove clutch inspection (derby) cover with motorcycle upright, not on side stand. If cover is removed with motorcycle on side stand, primary fluid will leak out of primary chaincase.

1. On models so equipped, remove the **left-side** passenger footboard. Using a T-27 TORX® drive head, remove the five screws with captive washers. Save screws and washers for installation.

NOTE

The gasket between the clutch inspection cover and the chaincase cover must be removed and all oil must be wiped from the gasket and groove in chaincase cover each time the cover is removed.

2. Remove the gasket from the groove in the chaincase cover and mounting surface.

3. Inspect gasket for tears or damage. Replace as required.

NOTE

If installing the Derby cover on 2006 and later Dyna or a 2007 and later Touring or Softail model, the original equipment gasket **must** be discarded and replaced with Derby Cover Gasket 25416-99C (sold separately).

4. To avoid punching holes in the clutch inspection cover gasket or enlarging the existing holes, install the new derby cover and gasket as follows:

- a. Align the triangular shaped hole in the gasket with the top hole in the derby cover. Be sure the rubber molding and the words "towards clutch" face the motorcycle.
- b. See Figure 2. Place a washer (3) onto the threads of one of the screws. Insert the screw threads through the top hole in the derby cover, and carefully thread it all the way through the triangular shaped hole in the gasket. Do not push the screw through the hole.
- c. Hang the derby cover on the primary chaincase cover flange by starting the top cover screw.
- d. Start the remaining four screws and washers.

5. Install derby cover (1) and gasket on primary chaincase cover using screws and washers from the kit. Tighten screws to 84-108 **in-lbs** (10-12 Nm) in the sequence shown in Figure 1.

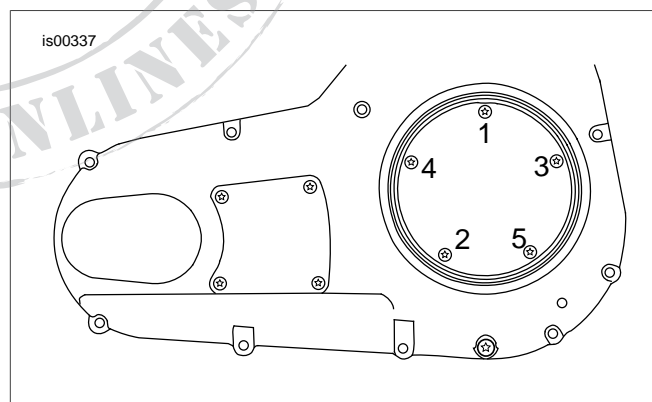


Figure 1. Torque Sequence, Clutch Inspection Cover

SERVICE PARTS

is04113

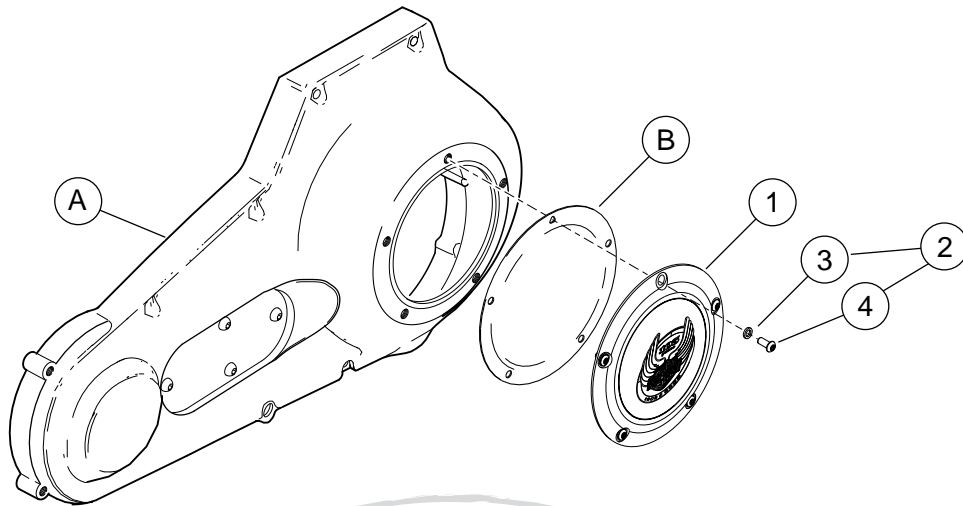


Figure 2. 105th Anniversary Derby Cover

Table 1. Service Parts Table

Item	Description (Quantity)	Part Number
1	Derby cover	Not Sold Separately
2	Hardware kit, derby cover (includes items 3 and 4)	25913-99
3	Washer, 1/4 in. stainless steel (5)	Not Sold Separately
4	Screw, Torx, chrome (5)	94633-99
Items not included in kit:		
A	Original equipment primary chaincase cover	
B	Clutch inspection cover gasket, part number 25416-99C	