



INSTRUCTIONS

-J04857

2009-01-08

SCREAMIN' EAGLE TWIN-CAM SPROCKET SPACER KIT

GENERAL

Kit Number

25285-08

Models

This kit is designed for installation on early Twin Cam engines equipped with splined camshafts and Billet Cam Plate Kit 25284-08, including the roller cam chain upgrade.

▲ WARNING

The rider's safety depends upon the correct installation of this kit. Use the appropriate service manual procedures. If the procedure is not within your capabilities or you do not have the correct tools, have a Harley-Davidson dealer perform the installation. Improper installation of this kit could result in death or serious injury. (00333a)

NOTE

This instruction sheet references service manual information. A service manual for your model motorcycle is required for this installation and is available from a Harley-Davidson Dealer.

Kit Contents

See Figure 1 and Table 1.

INSTALLATION

▲ WARNING

Prevent accidental vehicle start-up, which could cause death or serious injury. First disconnect negative (-) battery cable at engine and then positive (+) cable from battery. (00280b)

1. Obtain and install new Screamin' Eagle cams according to the instructions provided with the cams.
2. Apply a thin film of clean H-D 20W50 engine oil to the splines of the rear cam.
3. Install splined sprocket to (drive) camshaft according to instructions in applicable service manual. Use spacers listed in Figure 1. of this Instruction Sheet, in place of those listed in service manual.

NOTE

Verify alignment at crank and primary cam sprocket punch marks as described in service manual.

Verify alignment at crank and primary cam sprocket faces. Use included spacers to maintain alignment at + or - 0.010".

SERVICE PARTS

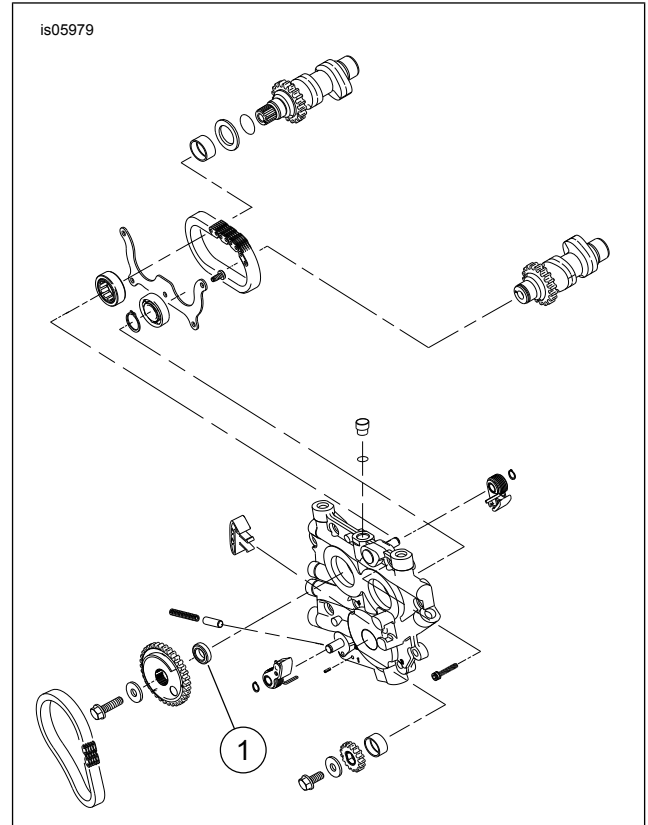


Figure 1. Service Parts: Cam Sprocket Spacer Kit

Table 1. Service Parts

Item	Description (Quantity)	Part Number
1	Spacer, 0.307 thickness	25721-00
1	Spacer, 0.317 thickness	25719-00
1	Spacer, 0.327 thickness	25717-00
1	Spacer, 0.337 thickness	25725-00
1	Spacer, 0.347 thickness	11889
1	Spacer, 0.357 thickness	11890

NOTE: These spacers are a new set to be used with the new rear cam roller bearing assembly only. Do not attempt to use earlier design spacers as they will not work properly and may cause damage.