



INSTRUCTIONS

-J05337

REV. 2011-05-15

SCREAMIN' EAGLE BILLET CAM SUPPORT PLATE AND HIGH VOLUME OIL PUMP KIT

GENERAL

Kit Number

25282-11

Models

For model fitment information, see the P&A retail catalog or the Parts and Accessories section of www.harley-davidson.com (English only).

Additional Parts Required

Proper installation of this kit requires the separate purchase of the following additional items:

Table 1. Additional Parts Required

Description	Part Number
Cam Service Kit	17045-99D
Drive Gear Retention Kit	25566-06

Tools and Supplies Required

Proper installation of this kit also requires the use of the following tools and materials:

- Camshaft Assembly Tool (Part No. HD-47956)
- Screamin' Eagle Crankshaft/Camshaft Sprocket Locking Tool (Part No. 94076-09)
- Loctite® 243 Threadlocker and Sealant - Blue (Part No. 99642-97)
- Loctite 262 Threadlocker and Sealant - Red (Part No. 94759-99)
- Loctite 7649 Cleaner/Primer (Part No. 98968-99)
- Screamin' Eagle Assembly Lube (Part No. 94971-09)

WARNING

The rider's safety depends upon the correct installation of this kit. Use the appropriate service manual procedures. If the procedure is not within your capabilities or you do not have the correct tools, have a Harley-Davidson dealer perform the installation. Improper installation of this kit could result in death or serious injury. (00333a)

NOTE

This instruction sheet refers to service manual information. A service manual for this year/model motorcycle is required for this installation and is available from a Harley-Davidson dealer.

Kit Contents

See Figure 2 and Table 2.

PREPARATION

NOTE

For vehicles equipped with security siren:

- Verify that the Hands-Free Fob is present.
- Turn the ignition key switch to IGNITION.

WARNING

To prevent spray of fuel, purge system of high-pressure fuel before supply line is disconnected. Gasoline is extremely flammable and highly explosive, which could result in death or serious injury. (00275a)

1. Follow service manual instructions to purge the fuel supply of high pressure gasoline and remove the fuel supply line.

WARNING

To prevent accidental vehicle start-up, which could cause death or serious injury, remove main fuse before proceeding. (00251b)

2. Refer to the service manual and follow the instructions to remove the main fuse. Remove the seat. Retain all seat mounting hardware.

REMOVAL

NOTES

Installing this kit requires removal and installation of the cam support plate. Refer to the service manual for instructions with the following exceptions pertaining to cam compartment components:

- The crank and primary cam sprocket flange bolts are specially hardened, and the flat washers are of a special diameter and have ground surfaces. Use **ONLY** the parts provided in the Drive Gear Retention Kit (Part No 25566-06, sold separately) when installing this kit.
 - The crank sprocket flange bolts and primary cam sprocket flange bolts **ARE NOT** interchangeable.
1. Remove the cam cover and gasket per service manual instructions.
 2. Refer to the service manual to remove and discard the crank sprocket flange bolts and primary cam sprocket flange bolts and washers.

3. Release the oil pump and remove the cam support plate and cams. Refer to the service manual to disassemble the cams from the support plate. Discard the support plate.
4. Carefully remove the oil pump assembly from the crankshaft.
5. Inspect the cams, chain, sprockets, oil pump, chain tensioners and guide for wear, and replace as needed. Refer to the service manual for inspection and replacement procedures.

INSTALLATION

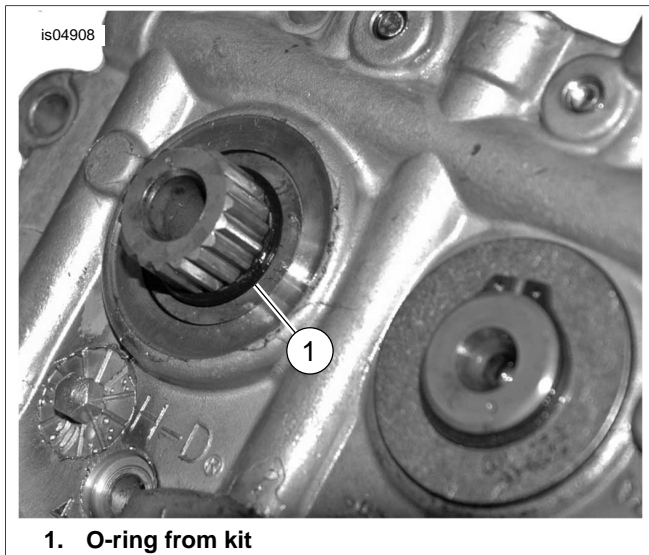
NOTE

- For detailed information on the following installation procedures, refer to the proper sections of the service manual.
 - When installing Screamin' Eagle camshaft kits, install the O-ring included in this kit over the splined shaft of the rear camshaft as shown in Figure 1.
1. Using the CAMSHAFT ASSEMBLY TOOL (Part No. HD-47956), assemble the camshafts, chains and tensioners to the **new** billet cam support plate.
 2. Install the oil pump per service manual instructions.
 3. Install the cam support plate assembly into the crankcase.
 4. Using the SCREAMIN' EAGLE CRANKSHAFT/ CAMSHAFT SPROCKET LOCKING TOOL (Part No. 94076-09), install the cam sprockets, chain and tensioner.
 5. Install the cam cover and a **new** gasket from the Cam Service Kit (Part No. 17045-99D, available separately).

NOTE

Verify that the ignition key switch is in the OFF position **before** installing the main fuse.

6. Refer to the service manual and follow the instructions to install the main fuse.



1. O-ring from kit

Figure 1. O-Ring Installed on Splined Shaft

SERVICE PARTS

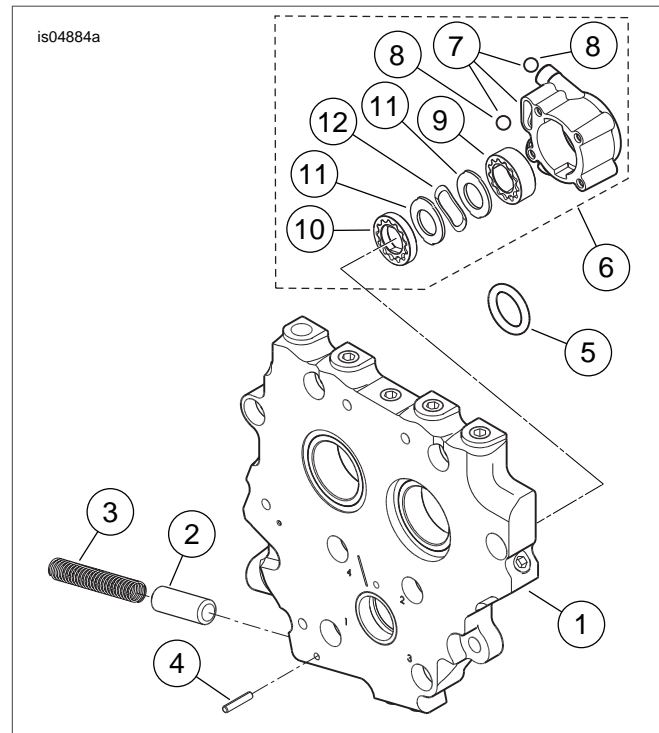


Figure 2. Service Parts, Screamin' Eagle Billet Cam Support Plate and High Volume Oil Pump Kit

Table 2. Service Parts

Item	Description (Quantity)	Part Number
1	Cam support plate, billet (includes items 2-4)	25400019
2	• Relief valve, oil pump (bypass valve)	26400-82B
3	• Spring, relief valve	26210-99
4	• Roll pin	601
5	O-ring, camshaft installation	11290
6	Oil pump assembly (includes items 7-12)	62400001
7	• Housing assembly, oil pump (includes item 8)	Not sold separately
8	• ...Ball (2)	8873
9	• Gerotor assembly, scavenge	Not sold separately
10	• Gerotor assembly, pressure	Not sold separately
11	• Separator plate, gerotor (2)	Not sold separately
12	• Spring, separator	40323-00