

1783

Bahn Levers for '14-UP Touring, Tuxedo

INFORMATION AND SUPPORT

INFO@BAHNPRODUCTS.COM

866 294 2827

## ⚠ WARNING

**THIS INDICATION ALERTS YOU TO THE FACT THAT IGNORING THE CONTENTS DESCRIBED HEREIN CAN RESULT IN POTENTIAL DEATH OR SERIOUS INJURY.**

## NOTICE

**This indication alerts you to the fact that ignoring the contents described herein may negatively affect product performance and functionality or damage the product itself or the product to which it is being attached.**

**MAKE SURE THE FOLLOWING PARTS HAVE BEEN INCLUDED IN THE KIT:**

- 1 Bahn Clutch Lever
- 1 Bahn Brake Lever
- 1 Installation Instructions

**YOU WILL ALSO NEED:**

Snap-ring pliers, needle-nose pliers, grease, set of Torx drivers

## NOTICE

**These installation instructions contain important information. Ensure that the end user receives this copy and is aware of its importance for future reference.**

- STEP 1** Read and understand all **STEPS** in the instructions before starting the installation. Park the motorcycle on a hard, level surface and turn **IGN OFF**. Secure the motorcycle on the center stand (if equipped) or in a motorcycle wheel chock. Remove the main fuse.

## ⚠ WARNING

**THE END USER'S SAFETY DEPENDS UPON PROPER INSTALLATION OF THIS PRODUCT. IF A STEP IN THESE INSTRUCTIONS IS NOT WITHIN YOUR CAPABILITIES OR YOU DO NOT HAVE THE CORRECT TOOLS, HAVE YOUR DEALER PERFORM THE PROCEDURE. IMPROPER INSTALLATION OF THIS PRODUCT COULD RESULT IN DEATH OR SERIOUS INJURY.**

**ACCIDENTAL VEHICLE START-UP COULD CAUSE DEATH OR SERIOUS INJURY, REMOVE THE MAIN FUSE BEFORE PROCEEDING.**

## NOTICE

**Avoid damage to the motorcycle. Protect painted surfaces with a soft cloth or blanket.**

1783

## Bahn Levers for '14-UP Touring, Tuxedo

INFORMATION AND SUPPORT

INFO@BAHNPRODUCTS.COM

866 294 2827

### CLUTCH-SIDE INSTALLATION:

**STEP 2** Refer to **PIC 1**. Remove the snap-ring securing the clutch lever pivot-pin in the perch assembly; save it for later.

**STEP 3** Refer to **PIC 1**. Carefully remove the pivot pin; save for later.

**STEP 4** Carefully remove the existing clutch lever.

**STEP 5** Refer to **PIC 2 and 3**. Remove the roller bushing; ensure that the plastic alignment-cap remains in place.

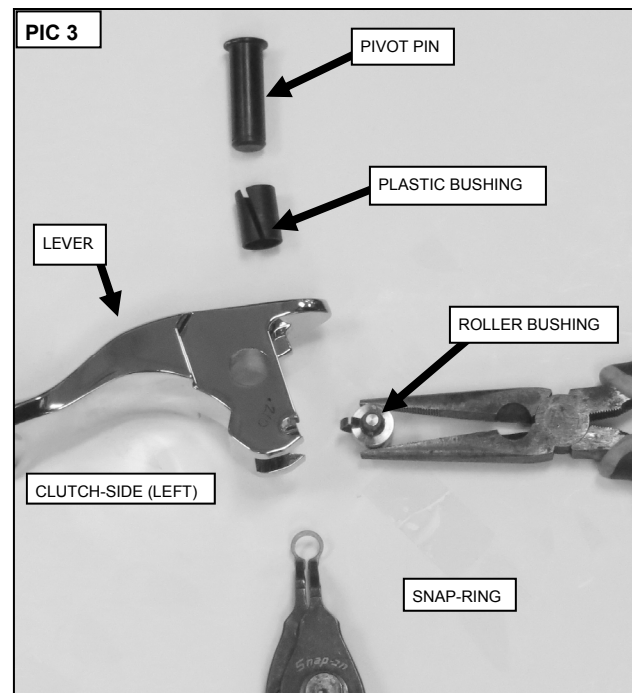
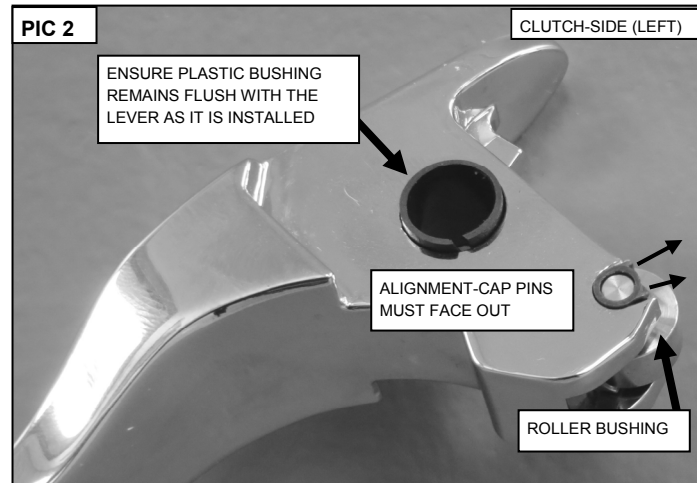
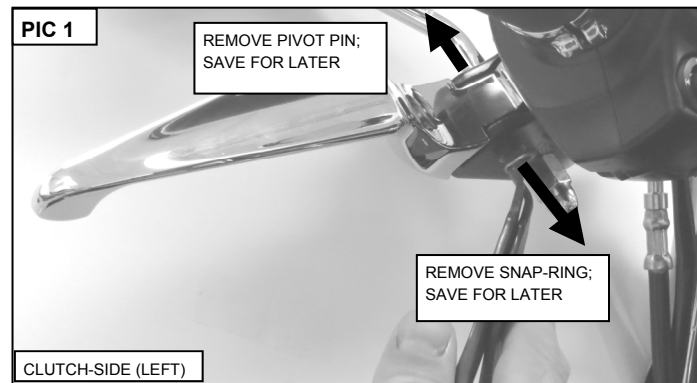
DO NOT LOSE THE ALIGNMENT CAP. Replace the alignment-cap if it is broken (H/D P/N. 46246-01).

#### **⚠ WARNING**

**DO NOT OPERATE THE MOTORCYCLE WITHOUT THE ALIGNMENT CAP. THE LEVER MAY BIND RESULTING IN LOSS OF CONTROL LEADING TO SERIOUS INJURY OR DEATH**

**STEP 6** Install the roller bushing in the new Clutch Lever; apply a bit of grease to the roller; ensure that the pins on the plastic alignment-cap locate in the new lever as shown in **PIC 2**.

**STEP 7** Refer to **PIC 2 and 3**. Ensure that the plastic bushing remains flush with the new Clutch Lever.



1783

## Bahn Levers for '14-UP Touring, Tuxedo

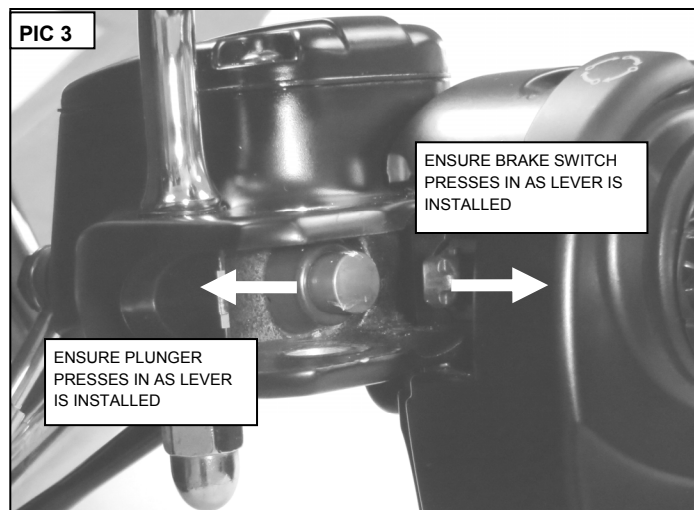
INFORMATION AND SUPPORT

INFO@BAHNPRODUCTS.COM

866 294 2827

**STEP 8** Ensure that the clutch switch and clutch plunger are pressed in and do not bind as Lever is installed in the reverse order it was removed.

**STEP 9** Reinstall the pivot pin and secure with the snap-ring; compress the lever a few times to ensure that it is working properly BEFORE starting the motorcycle.



### BRAKE-SIDE INSTALLATION:

**STEP 10** Remove the snap-ring securing the brake lever pivot-pin in the perch assembly; set it aside for now it will be reused.

**STEP 11** Remove the two screws securing the outside half of the brake-side perch-clamp.

Secure the master cylinder/lever assembly as the screws are removed to prevent damage.

**STEP 12** With the master cylinder/lever assembly removed from the handlebar, remove the pivot pin and lever; set the pivot pin aside, it will be reused.

1783

## Bahn Levers for '14-UP Touring, Tuxedo

INFORMATION AND SUPPORT

INFO@BAHNPRODUCTS.COM

866 294 2827

**STEP 13** Install the new Brake Lever in the reverse order the existing lever was removed.

Ensure that the plastic bushing remains in the new Brake Lever as it is installed.

Ensure that the brake switch and brake plunger are compressed as the lever is installed.

**STEP 14** Compress the Brake Lever a few times to ensure that the brakes work properly BEFORE starting the motorcycle. Reinstall the main fuse.

### NOTICE

**It is the end user's responsibility to ensure that all of the fasteners (including pre-assembled) are tightened before operation of the motorcycle. Kuryakyn will not provide warranty coverage on products or components lost due to improper installation or lack of maintenance. Periodic inspection and maintenance are required on all fasteners.**

#### LIMITED WARRANTY

Kuryakyn warrants that any Kuryakyn products sold hereunder, shall be free of defects in materials & workmanship for a period of one (1) year from the date of purchase by the consumer excepting the following provisions:

1. Kuryakyn shall have no obligation in the event the customer is unable to provide a receipt showing the date the customer purchased the product(s).
2. The product must be properly installed, maintained & operated under normal conditions.
3. Kuryakyn shall not be liable for any consequential & incidental damages, including labor & paint, resulting from failure of a Kuryakyn product, failure to deliver, delay in delivery, delivery in nonconforming condition, or for any breach of contract or duty between Kuryakyn & a customer.
4. Kuryakyn products are often intended for use in specific applications. Kuryakyn makes no warranty if a Kuryakyn product is used in applications other than intended.
5. Kuryakyn electrical products are warranted for one (1) year from the date of purchase by the consumer. L.E.D.'s contained in components of Kuryakyn products will be warranted for defects in materials & workmanship for 3 years from the date of purchase where as all other components shall be warranted for one (1) year. This includes, but is not limited to; control modules, wiring, chrome & other components.
6. Exhaust systems are warranted for manufacturing defects only. There is no warranty on exhaust pipes & mufflers with regard to any discoloration. Discoloration or "blue-ing" is caused by tuning characteristics, exhaust timing, carburetor jetting, overheating, etc. & is not caused by defective manufacturing.
7. Kuryakyn makes no warranty of any kind in regard to other manufacturer's products distributed by Kuryakyn. Kuryakyn will pass on all warranties made by the manufacturer & where possible, will expedite the claim on behalf of the customer, but ultimately, responsibility for disposition of the warranty claim lies with the manufacturer.
8. Merchandise purchased directly from internet auction sites or any other third party seller is considered sold as is & shall not carry a Kuryakyn warranty. All warranty claims must be directed to the original seller. If unsure please contact the seller to verify they are an authorized Kuryakyn retailer.