



## UNIVERSAL ACCESSORY MOUNT with 1" CLAMP

### 1680

### PARTS INCLUDED

- 1 Mounting Plate
- 1 1" Handlebar Clamp
- 1 Universal Handlebar Accessory Mount Kit
  - 2 3/4" x 2" Foam Adhesive Pads
  - 1 8" x 1/2" Hook and Loop Strap
  - 4 #8-32 X 1" Phillips Head Pan Screws
  - 4 #8-32 Nylock Nuts
  - 4 #8 Flat Washers
  - 4 6" Black Nylon Cable Ties
  - 1 Anti-Seize Packet
- 1 Hardware Kit
  - 2 Shim Washers
  - 1 5/16" Split Lock Washer
  - 1 Thumb Nut
- 1 Installation Instructions

**Please note that all hardware included may not be used for installation!**

*Please read and understand entire instructions before starting installation.*

### THANK YOU FOR CHOOSING KÜRYAKYN!

**IN ORDER TO PROTECT YOU AND OTHERS FROM POSSIBLE INJURY AND/OR PROPERTY DAMAGE OR LOSS, PLEASE PAY CLOSE ATTENTION TO ALL INSTRUCTIONS, WARNINGS, CAUTIONS AND ATTENTION NOTES REGARDING THE USE AND CARE OF THIS PRODUCT.**

**WARNING!** THIS INDICATION ALERTS YOU TO THE FACT THAT IGNORING THE CONTENTS DESCRIBED HEREIN CAN RESULT IN POTENTIAL DEATH OR SERIOUS INJURY.

**ATTENTION!** This indication alerts you to the fact that ignoring the contents described herein may negatively affect product performance and functionality.

**CAUTION!** This indication alerts you to the fact that ignoring the contents described herein can result in potential injury or material damage.

### TOOLS SUGGESTED

Phillips Screwdriver, Set of Combination Wrenches, Adjustable Wrench, Set of Hex Wrenches

**STRICTLY OBSERVE THE FOLLOWING GUIDELINES IN ORDER TO USE THE PRODUCT PROPERLY AND AVOID POTENTIALLY DANGEROUS ACCIDENTS.**

**STEP 1** Read and understand all steps in the instructions before starting the installation. Park the motorcycle on a hard, level surface and turn off the ignition.

**CAUTION!** Avoid damage to the motorcycle. Protect painted surfaces with a soft cloth or blanket.

**ATTENTION!** Use the supplied anti-seize for any chrome-to-chrome fasteners; this will prevent galling and make future removal of fasteners easier.

**STEP 2** Separate the clamp and place the clamp halves around the 1" bar. Apply anti-seize to the two clamp screws and finger tighten the clamp to the bar.

1680-21MC-0811

-cont.-

### CUSTOMER SERVICE

877.370.3604 (toll free)

### INSTALLATION QUESTIONS

techsupport@kuryakyn.com  
or call 715.247.2983

### LIMITED WARRANTY

Küryakyn warrants that any Küryakyn products sold hereunder, shall be free of defects in materials and workmanship for a period of one (1) year from the date of purchase by the consumer excepting the following provisions:

- Küryakyn shall have no obligation in the event the customer is unable to provide a receipt showing the date the customer purchased the product(s).
  - The product must be properly installed, maintained and operated under normal conditions.
  - Küryakyn makes no warranty, expressed or implied, with respect to any gold plated products.
  - Küryakyn shall not be liable for any consequential and incidental damages, including labor and paint, resulting from failure of a Küryakyn product, failure to deliver, delay in delivery, delivery in nonconforming condition, or for any breach of contract or duty between Küryakyn and a customer.
- Küryakyn products are often intended for use in specific applications. Küryakyn makes no warranty if a Küryakyn product is used in applications other than intended.
- Küryakyn electrical products are warranted for one (1) year from the date of purchase by the consumer. L.E.D.'S contained in components of Küryakyn products will be warranted for defects in materials and workmanship for 3 years from the date of purchase where as all other components shall be warranted for one(1) year. This includes, but is not limited to; control modules, wiring, chrome & other components.
- Küryakyn makes no warranty of any kind in regard to other manufacturer's products distributed by Küryakyn. Küryakyn will pass on all warranties made by the manufacturer and where possible, will expedite the claim on behalf of the customer, but ultimately, responsibility for disposition of the warranty claim lies with the manufacturer.

### ABOUT OUR CATALOG

For purchasing Küryakyn® products, you can receive a complete catalog free of charge. Send the Proof-of-Purchase below with your address to: Küryakyn, P.O. Box 339, Somerset, WI 54025. Please indicate either Accessories Catalog for Harley-Davidson® or GL & Metric Cruisers.

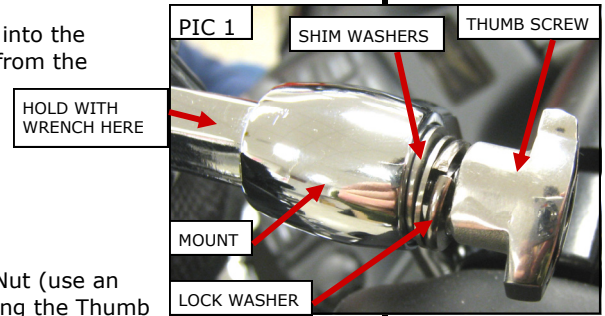
Be sure to ask your local dealer about other Küryakyn® products, the motorcycle parts and accessories designed for riders by riders.

©2005 Küryakyn USA® All Rights reserved.



**NOTE:** The Clamp can be installed on the top or bottom side of the handlebar for best riding position.

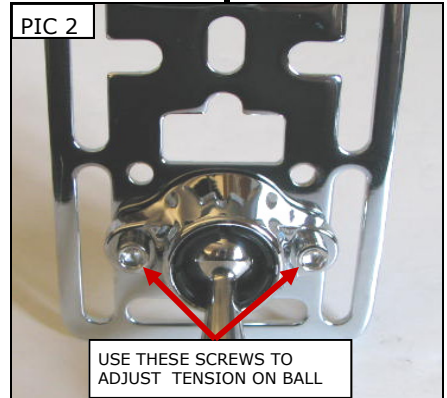
**STEP 3** As Shown in PIC 1, insert the threaded stud of the Accessory Mount into the clamp. Mount the 5/16" Lock Washer and one or two shim washers from the hardware kit to the stud.



**ATTENTION!** Apply Anti-Seize on the threaded stud.

**STEP 4** Thread the included Thumb Nut onto the stud.

**STEP 5** Adjust the Accessory Mount to desired position; tighten the Thumb Nut (use an adjustable wrench to hold the hex portion of the shaft when tightening the Thumb Nut PIC 1) and Clamp screws. To increase the tension on the ball mount, tighten the two socket head cap screws. To decrease the tension on the ball mount, loosen the socket head cap screws. PIC 2



**ATTENTION!** Determine the mounting location and orientation of the Accessory Mount before fully tightening the two Clamp screws. The Clamp may leave marks on the handlebar when tightened down.

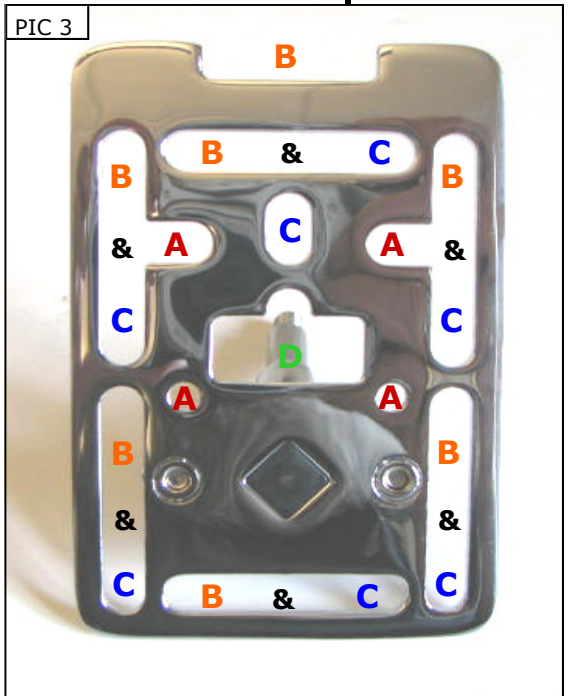
**WARNING!** ENSURE THAT THERE IS CLEARANCE AT ALL POINTS WHEN THE HANDLEBARS ARE TURNED. INSUFFICIENT CLEARANCE MAY CAUSE DAMAGE TO THE MOTORCYCLE OR CAN CAUSE LOSS OF CONTROL THAT COULD RESULT IN SEVERE INJURY OR DEATH.

### Attaching Accessories

**NOTE:** Works well with Kuryakyn Accessory Pouches and Ram Device Holders.

- The 4-hole AMPS pattern ("A" in PIC.3) is common to many GPS and satellite radio docking cradles. The included #8-32 X 1" Phillips Head Screws, #8 Flat Washers and #8 nylon insert lock nuts can be used to mount cradles to the stainless steel mounting plate. You may use any combination of slots and hardware to securely mount your accessory to the mounting plate.

**ATTENTION!** It is the installer's responsibility to ensure that all of the fasteners (including preassembled) are tightened before operation of the motorcycle. Kuryakyn will not warranty components lost due to improper installation. Periodic maintenance may be required.



- Hook and loop strap keepers ("B" in PIC.3).
- General-purpose mounting slots ("C" in PIC.3).
- Belt clip retainer ("D" in PIC.3).
- Kuryakyn pouches will bolt to the top "B" & "C" slot and the notch in "D"
- Ram Mounts will use either the top or bottom "B" & "C" side slots
- The adhesive foam has been included for vibration dampening where necessary.
- The included cable ties and cord keepers have been included to secure accessory wiring out of the way of pinch points, extreme heat and moving parts.
- The stainless steel mounting plate can be drilled and tapped to accommodate different mounting patterns.

**CAUTION!** Kuryakyn is not responsible for items that may be stolen or damaged in relation to the use of this product.

**ATTENTION!** Check the Thumbscrew and all other fasteners before each ride.

*Ride On!*