



INSTRUCTIONS

-J05509

2014-03-12

SCREAMIN' EAGLE PRO XL PERFORMANCE CYLINDER HEADS

GENERAL

Kit Number

16500074

Models

This kit fits 2007-later XL 1200 model motorcycles.

Installation Requirements

Unless installed as part of a Stage IV upgrade, this kit requires the separate purchase of Perfect Fit Pushrod Kit (Part No. 18424-06). One is available from a Harley-Davidson dealer.

A Top End Overhaul Gasket Kit (Part No. 17049-04A) must also be purchased separately. One is available from a Harley-Davidson dealer.

▲ WARNING

The rider's safety depends upon the correct installation of this kit. Use the appropriate service manual procedures. If the procedure is not within your capabilities or you do not have the correct tools, have a Harley-Davidson dealer perform the installation. Improper installation of this kit could result in death or serious injury. (00333a)

NOTE

This instruction sheet references service manual information. A service manual for your model motorcycle is required for this installation. One is available from a Harley-Davidson dealer.

Recommended Parts

H-D recommends the use of Exhaust Flange (Part No. 65328-83A) to aid in exhaust headpipe re-installation. The headpipes should also be disassembled from the mufflers when attempting to re-assemble the exhaust system to the engine and motorcycle. The exhaust flanges can be purchased from a Harley-Davidson dealer.

Kit Contents

See Figure 1 and Table 1.

INSTALLATION

NOTE

These kits are intended for High Performance or Racing applications only. These engine related performance parts are not legal for sale or use on pollution controlled motor vehicles. This kit may reduce or void the limited vehicle warranty. Engine related performance parts are intended for the experienced rider only.

Due to the increased compression ratio, gasoline with a rating of at least 91 Octane must be used. The Octane Rating is usually displayed on the gas pump.

Refer to ENGINE section of service manual for all removal/disassembly and assembly/installation procedures.

NOTICE

Do not exceed the maximum safe RPM specified below under any conditions. Exceeding the maximum safe engine RPM can result in equipment damage. (00248a)

NOTE

The intake valve springs on the new cylinder heads have an installed spring height of 2.059 in. which equals 200 lbs of seat pressure.

The exhaust valve springs on the new cylinder heads have an installed spring height of 2.064 in. which equals 200 lbs of seat pressure.

1. Remove the existing cylinder head assemblies.
2. Install **new** cylinder heads from kit using new gaskets from Top End Overhaul Gasket Kit purchased separately.
3. Check engine for proper installation and operation. For custom combinations of performance components, check valve clearances as needed per engine building procedures in the service manual.



SERVICE PARTS

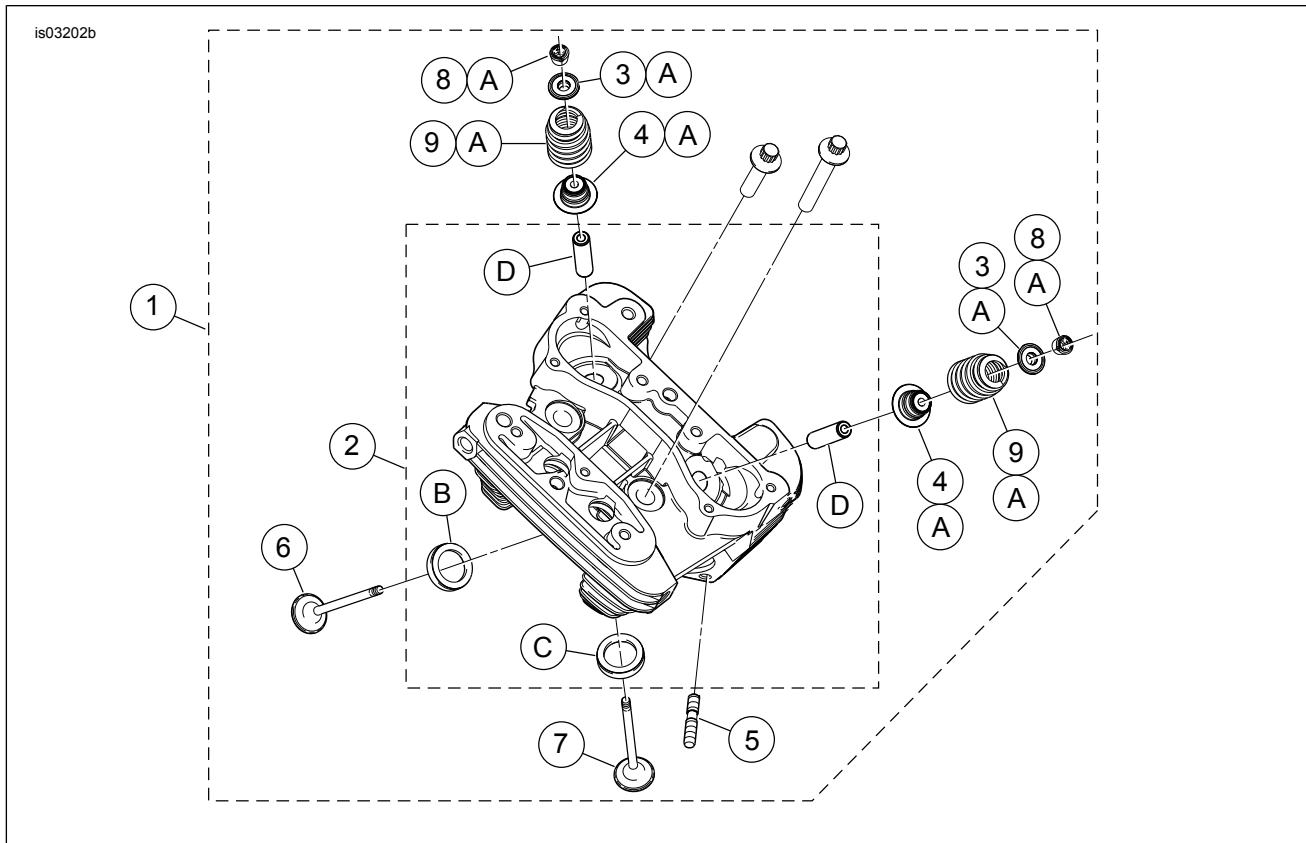


Figure 1. Service Parts: Screamin' Eagle Pro XL Performance Cylinder Heads

Table 1. Service Parts: Screamin' Eagle Pro XL Performance Cylinder Heads

Kit	Item	Description (Quantity)	Part Number
Kit 16500074 Black	1	Cylinder head assembly, rear (not shown, includes items 3 through 9)	Not sold separately
		Cylinder head assembly, front (shown, includes items 3 through 11)	Not sold separately
	2	• Cylinder head (machined, with items B, C and D installed)	Not sold separately
	3	• Collar, valve spring, upper (4) (part of item A)	18015-03B
	4	• Collar and valve guide seal, valve spring, lower (4) (part of item A)	18016-03
	5	• Stud, exhaust port (4)	16715-83
	6	• Intake valve (2)	18010-05
	7	• Exhaust valve (2)	18028-05
	8	• Retainer, valve collar (8) (also included with item A)	18260-02
	9	• Valve spring (4) (available only as part of item A)	Not sold separately
The following items come installed in the cylinder heads, but are also available separately:			
	A	Screamin' Eagle Valve Spring Kit	18013-03A
	B	Valve seat, intake	18020-07
	C	Valve seat, exhaust	18011-86
	D	Valve guide, intake and exhaust	16465-06