



WINDSHIELD MOUNTED TURN SIGNAL MIRRORS

1452

PARTS INCLUDED

- 1 Right Side Fairing Bar
- 1 Left Side Fairing Bar
- 1 Hardware Kit Containing:
 - 1 Center Fairing Bar
 - 3 1/4"-20 x 3/4" Button Socket Cap Screws
 - 3 Snap Caps
- 1 Right Side Turn Signal Mirror
- 1 Left Side Turn Signal Mirror
- 2 Turn Signal Wiring Harness Adapters (four pin)
- 1 Adapter Harness (six pin)
- 1 Dielectric Grease Packet
- 1 Installation Instructions

Please read and understand entire instructions before starting installation.

THANK YOU FOR CHOOSING KÜRYAKYN!

IN ORDER TO PROTECT YOU AND OTHERS FROM POSSIBLE INJURY AND/OR PROPERTY DAMAGE OR LOSS, PLEASE PAY CLOSE ATTENTION TO ALL INSTRUCTIONS, WARNINGS, CAUTIONS AND NOTICES REGARDING THE USE AND CARE OF THIS PRODUCT.

WARNING

THIS INDICATION ALERTS YOU TO THE FACT THAT IGNORING THE CONTENTS DESCRIBED HEREIN CAN RESULT IN POTENTIAL DEATH OR SERIOUS INJURY.

NOTICE

This indication alerts you to the fact that ignoring the contents described herein may negatively affect product performance and functionality.

NOTICE

IF INSTALLING THIS PRODUCT FOR ANOTHER PARTY, PLEASE MAKE SURE THEY RECEIVE THIS COPY OF THE INSTALLATION INSTRUCTIONS SO THEY ARE AWARE OF THE IMPORTANT INFORMATION CONTAINED IN THEM.

TOOLS SUGGESTED

Set of Hex Wrenches, Set of Torx Wrenches or Sockets, Ratchet, Set of Combination Wrenches

STRICTLY OBSERVE THE FOLLOWING GUIDELINES IN ORDER TO USE THE PRODUCT PROPERLY AND AVOID POTENTIALLY DANGEROUS ACCIDENTS.

STEP 1

Read and understand all steps in the instructions before starting the installation. Park the motorcycle on a hard, level surface and turn off the ignition.

NOTE: If installing windshield mounted mirrors on Kuryakyn AirMaster Fairing, reuse the hardware included with the fairing.

WARNING

A FACTORY SERVICE MANUAL WILL BE HELPFUL IN PERFORMING THIS INSTALLATION. DO NOT ATTEMPT TO PERFORM THIS INSTALLATION IF YOU ARE NOT CONFIDENT IN YOUR ABILITY TO COMPLETE ALL OF THE STEPS IN THE PROCEDURE; CONSULT A TRAINED TECHNICIAN. IMPROPER INSTALLATION COULD RESULT IN SERIOUS INJURY OR DEATH.

CUSTOMER SERVICE

877.370.3604 (toll free)

INSTALLATION QUESTIONS

techsupport@kuryakyn.com
or call 715.247.2983

LIMITED WARRANTY

Kuryakyn warrants that any Kuryakyn products sold hereunder, shall be free of defects in materials and workmanship for a period of one (1) year from the date of purchase by the consumer excepting the following provisions:

- Kuryakyn shall have no obligation in the event the customer is unable to provide a receipt showing the date the customer purchased the product(s).
 - The product must be properly installed, maintained and operated under normal conditions.
 - Kuryakyn makes no warranty, expressed or implied, with respect to any gold plated products.
 - Kuryakyn shall not be liable for any consequential and incidental damages, including labor and paint, resulting from failure of a Kuryakyn product, failure to deliver, delay in delivery, delivery in nonconforming condition, or for any breach of contract or duty between Kuryakyn and a customer.
- Kuryakyn products are often intended for use in specific applications. Kuryakyn makes no warranty if a Kuryakyn product is used in applications other than intended.
- Kuryakyn electrical products are warranted for one (1) year from the date of purchase by the consumer. L.E.D.'S contained in components of Kuryakyn products will be warranted for defects in materials and workmanship for 3 years from the date of purchase where as all other components shall be warranted for one(1) year. This includes, but is not limited to; control modules, wiring, chrome & other components.
- Kuryakyn makes no warranty of any kind in regard to other manufacturer's products distributed by Kuryakyn. Kuryakyn will pass on all warranties made by the manufacturer and where possible, will expedite the claim on behalf of the customer, but ultimately, responsibility for disposition of the warranty claim lies with the manufacturer.

ABOUT OUR CATALOG

For purchasing Kuryakyn® products, you can receive a complete catalog free of charge.

Send the Proof-of-Purchase below with your address to: Kuryakyn, P.O. Box 339, Somerset, WI 54025.

Please indicate either Accessories Catalog for Harley-Davidson® or GL & Metric Cruisers.

Be sure to ask your local dealer about other Kuryakyn® products, the motorcycle parts and accessories designed for riders by riders.

©2005 Kuryakyn USA® All Rights reserved.



kuryakyn.com

NOTICE

The intent of these turn signal mirrors are as supplemental turn signals only. Any other use may be in violation of Federal, State or local regulations.

Küryakyn®

STEP 2 Remove the three Torx screws securing the windscreen to the fairing; set them aside, they will not be re-used. FIG 1

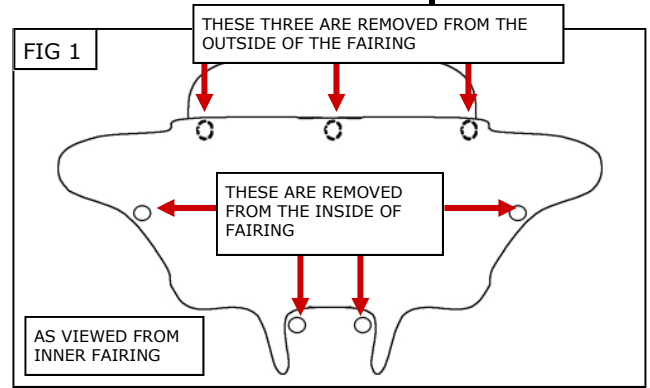
STEP 3 Remove the four Torx screws securing the outer fairing to the inner fairing. They **will be REUSED**. FIG 1

NOTICE

Avoid damage to the motorcycle. Protect painted surfaces with a soft cloth or blanket.

NOTICE

Assistance is recommended to hold and support the outer fairing after all of the Torx screws have been removed to prevent damage.



STEP 4 Unplug the headlight connector and gently set the outer fairing on a soft, sturdy surface.

STEP 5 Remove the existing mirrors and set them aside, they will not be re-used.

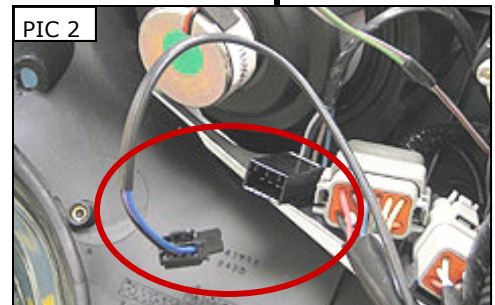
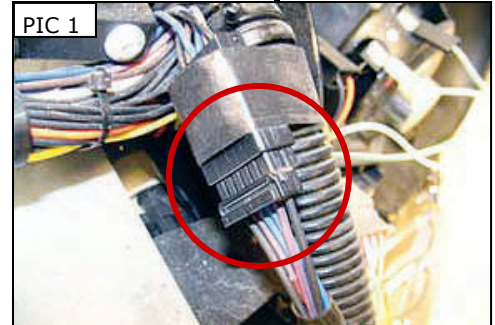
FOR '05 AND EARLIER MODELS

STEP 6 Locate the six pin harness which is generally located on the left hand side of the fairing. PIC 1

STEP 7 Disconnect the harness and plug in the new six pin adapter harness from the hardware kit.

STEP 8 Connect the mirror wiring harness into the pigtails from the adapter side. The longer three pin adapter goes to the right side mirror.

STEP 9 Proceed to Step 14.



FOR '06 AND UP MODELS

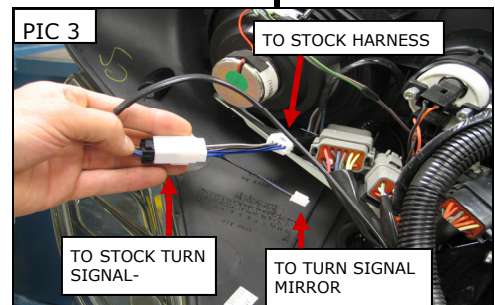
STEP 10 Locate and separate the stock left turn signal connector. The connector is located on the inside of the inner fairing. PIC 2 There will be one violet wire, one blue wire and one black wire coming out of the connector.

NOTICE

Use a test light to verify wire functions before connecting the L.E.D. circuit board to non-stock wiring. Küryakyn is not responsible for damage to the LED circuit board caused by non-stock wiring.

STEP 11 Locate the included four pin Wiring Harness Adapter.

STEP 12 Connect the Wiring Harness Adapter as shown in PIC 3. The white male connector will plug into the stock black female connector. The white female connector will plug into the stock black male connector. The small white connector will be free for now. Place a small amount of the included dielectric grease directly on the terminals in the connectors.



NOTICE

Küryakyn recommends the use of dielectric grease on all electrical connections.

-cont.-

PAGE

2

WINDSHIELD MOUNTED MIRRORS

INSTALLATION

STEP 13 Repeat STEP 9 through STEP 12 for the right side.

ALL MODEL YEARS

STEP 14 Locate the Left Side Turn Signal Mirror. FIG 2 The drain hole on each mirror will be on the bottom of the mirror housing.

STEP 15 Locate the Left Side Fairing Bar. PIC. 4

STEP 16 Thread the mirror-mounting stud into the fairing bar. Tighten the mirror-mounting stud against the fairing bar with an open-end wrench.

STEP 17 Repeat STEP 14 through STEP 16 for the right side.

STEP 18 Connect the turn signal wire connector from the left side mirror/fairing bar assembly to the small white connector on the left side wiring harness adapter (from STEP 8 or STEP 12).

STEP 19 Repeat STEP 18 for the right side.

NOTE: Have an assistant hold the mirror/fairing bar assemblies or set them on a soft sturdy surface until the outer fairing is reinstalled.

STEP 20 With the turn signal wires connected to their respective wiring harness adapters, turn the ignition on and test for the proper function of the turn signals; turn the ignition off when you are done testing.

WARNING ENSURE PROPER LIGHT OPERATION BEFORE RIDING THE MOTORCYCLE. VISIBILITY IS A MAJOR CONCERN FOR MOTORCYCLISTS. A LIGHT MALFUNCTION COULD RESULT IN DEATH OR SERIOUS INJURY.

STEP 21 Secure the wires up and out of the way of pinch points with the included cable ties. Leave enough of the wire loose to allow for mirror adjustment when fully installed.

NOTICE Secure all wiring from the newly installed and/or from existing parts, away from any moving parts, pinch points or extreme heat. Kuryakyn WILL NOT issue a warranty on any electrical component that fails due to pinched, crimped, broken, abraded, melted or frayed wires.

STEP 22 Reconnect the headlight. Reinstall the outer fairing and secure it with the four stock screws removed in STEP 3. Leave the screws finger tight for now to allow for routing of the turn signal wires.

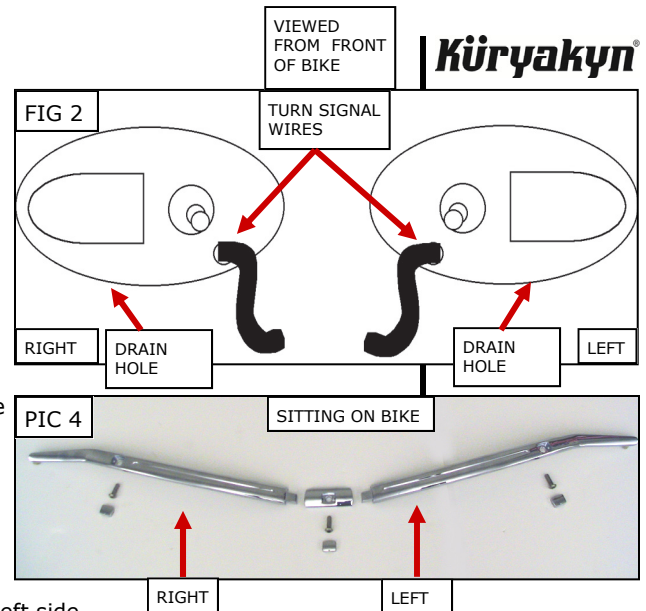
STEP 23 Install the windshield in the reverse order it was removed; **DO NOT** install the screws at this time.

STEP 24 Hold the Left Side Fairing Bar assembly in place and secure it to the fairing with one of the included 1/4"-20 X 3/4" button socket cap screws. Leave the screw finger tight for now. PIC 5

NOTE: Apply a small amount of blue thread locker to the screws that secure the bars to the fairing.

STEP 25 Repeat STEP 24 for the right side.

-cont.-



ROUTE WIRES BETWEEN THE FAIRING HALVES ON BOTH SIDES

- STEP 26** Install the Center Fairing Bar as shown in PIC 5 with one of the included 1/4"-20 X 3/4" button socket cap screws; leave the screw finger tight for now
- STEP 27** Route the turn signal wires along the Fairing Bars and in between the inner and outer fairings. PIC 6
- STEP 28** Align all three bars and tighten the 1/4"-20 X 3/4" button socket cap screws.

NOTICE

It is the installer's responsibility to ensure that all of the fasteners (including pre-assembled) are tightened before operation of the motorcycle. Küryakyn will not provide warranty coverage on products or components lost due to improper installation or lack of maintenance. Periodic inspection and maintenance are required on all fasteners.

- STEP 29** Install the three included Snap Caps over the screws in STEP 28. The small drain hole should be on the bottom when installed correctly.
- STEP 30** Tighten all of the Torx fasteners in the fairing.
- STEP 31** Adjust the mirrors for proper visibility before riding the motorcycle.

ADJUSTING THE MIRRORS

- STEP 1** Remove the two bolts securing the mirror halves together; set them aside, they will be re-used.

NOTE: Make sure hex wrench is fully seated in bolt. These will strip easily. PIC 7

- STEP 2** Remove the turn signal half of the mirror. Gently maneuver the half over the fairing bar and let it rest there until it is re-assembled. PIC 7

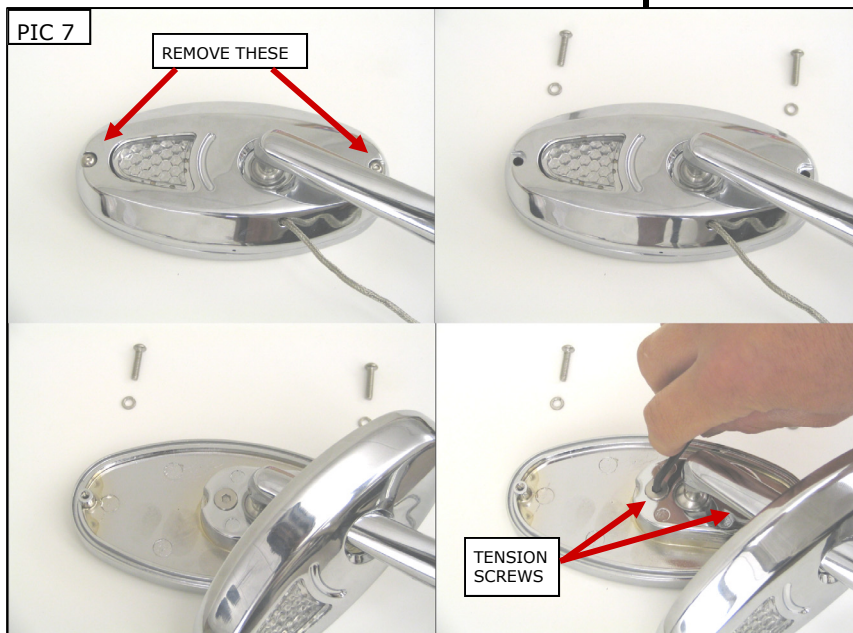
- STEP 3** Tighten the two adjuster screws equally for a more rigid hold; loosen the two adjuster screws equally for a looser hold. **DO NOT** loosen the screw too much or the retaining nut inside the mirror housing will fall off and cannot be recovered.

- STEP 4** Test the adjustment of the mirror before re-assembling the halves in the reverse order they were separated.

- STEP 5** Adjust the mirrors for proper visibility before riding the motorcycle.

NOTICE

It is the installer's responsibility to ensure that all of the fasteners (including pre-assembled) are tightened before operation of the motorcycle. Küryakyn will not provide warranty coverage on products or components lost due to improper installation or lack of maintenance. Periodic inspection and maintenance are required on all fasteners.



Ride On!