



MAGNUM PLUS MIRROR

1412

PARTS INCLUDED

- 1 Magnum Plus Mirror Assembly—Large Head/Flat Glass Lens/Long Stem
- 1 Hardware Kit, Including:
 - 1 5/16"-18 X 1-1/2" Socket Head Cap Screw
 - 1 5/16"-18 X 2" Socket Head Cap Screw
 - 1 2.5mm Hex Wrench
 - 1 5/16" Split Lock Washer
 - 1 5/16" Internal Tooth Lock Washer
 - 1 Double End Threaded Stud
 - 1 1" Spacer—**NOT USED**
- 1 Installation Instructions

Please read and understand entire instructions before starting installation.

THANK YOU FOR CHOOSING KÜRYAKYN!

IN ORDER TO PROTECT YOU AND OTHERS FROM POSSIBLE INJURY AND/OR PROPERTY DAMAGE OR LOSS, PLEASE PAY CLOSE ATTENTION TO ALL INSTRUCTIONS, WARNINGS, CAUTIONS AND NOTICES REGARDING THE USE AND CARE OF THIS PRODUCT.

NOTICE	This indication alerts you to the fact that ignoring the contents described herein may negatively affect product performance and functionality.
CAUTION	This indication alerts you to the fact that ignoring the contents described herein can result in potential injury.

NOTICE	IF INSTALLING THIS PRODUCT FOR ANOTHER PARTY, PLEASE MAKE SURE THEY RECEIVE THIS COPY OF THE INSTALLATION INSTRUCTIONS SO THEY ARE AWARE OF THE IMPORTANT INFORMATION CONTAINED IN THEM.
---------------	---

TOOLS SUGGESTED

Set of Hex Wrenches, Set of Combination Wrenches

STRICTLY OBSERVE THE FOLLOWING GUIDELINES IN ORDER TO USE THE PRODUCT PROPERLY AND AVOID POTENTIALLY DANGEROUS ACCIDENTS.

ALL INSTALLATIONS

STEP 1 Read and understand all steps in the instructions before starting the installation. Park the motorcycle on a hard, level surface and turn off the ignition.

NOTE: The included 2.5mm Hex Wrench is used only in P/N 1428, 1430, 1437 & 1438 to adjust the swivel ball tension.

NOTE: Mirror adapters (sold separately) are required for installation on metric cruisers.

NOTICE	Avoid damage to the motorcycle. Protect painted surfaces with a soft cloth or blanket.
---------------	--

NOTICE	Ensure that the position of the mirror and stem DO NOT interfere with the operation of the motorcycle hand controls.
---------------	---

CUSTOMER SERVICE

877.370.3604 (toll free)

INSTALLATION QUESTIONS

techsupport@kuryakyn.com
or call 715.247.2983

LIMITED WARRANTY

Kuryakyn warrants that any Kuryakyn products sold hereunder, shall be free of defects in materials and workmanship for a period of one (1) year from the date of purchase by the consumer excepting the following provisions:

- Kuryakyn shall have no obligation in the event the customer is unable to provide a receipt showing the date the customer purchased the product(s).
 - The product must be properly installed, maintained and operated under normal conditions.
 - Kuryakyn makes no warranty, expressed or implied, with respect to any gold plated products.
 - Kuryakyn shall not be liable for any consequential and incidental damages, including labor and paint, resulting from failure of a Kuryakyn product, failure to deliver, delay in delivery, delivery in nonconforming condition, or for any breach of contract or duty between Kuryakyn and a customer.
- Kuryakyn products are often intended for use in specific applications. Kuryakyn makes no warranty if a Kuryakyn product is used in applications other than intended.
- Kuryakyn electrical products are warranted for one (1) year from the date of purchase by the consumer. L.E.D.'S contained in components of Kuryakyn products will be warranted for defects in materials and workmanship for 3 years from the date of purchase where as all other components shall be warranted for one(1) year. This includes, but is not limited to; control modules, wiring, chrome & other components.
- Kuryakyn makes no warranty of any kind in regard to other manufacturer's products distributed by Kuryakyn. Kuryakyn will pass on all warranties made by the manufacturer and where possible, will expedite the claim on behalf of the customer, but ultimately, responsibility for disposition of the warranty claim lies with the manufacturer.

ABOUT OUR CATALOG

For purchasing Kuryakyn® products, you can receive a complete catalog free of charge. Send the Proof-of-Purchase below with your address to: Kuryakyn, P.O. Box 339, Somerset, WI 54025. Please indicate either Accessories Catalog for Harley-Davidson® or GL & Metric Cruisers.

Be sure to ask your local dealer about other Kuryakyn® products, the motorcycle parts and accessories designed for riders by riders.

©2005 Kuryakyn USA® All Rights reserved.



NOTICE

It is the installer's responsibility to ensure that all of the fasteners (including pre-assembled) are tightened before operation of the motorcycle. Kuryakyn will not provide warranty coverage on products or components lost due to improper installation or lack of maintenance. Periodic inspection and maintenance are required on all fasteners.

Kuryakyn®

STEP 2 Remove the stock mirror from the hand controls; set it aside, they will not be re-used.

MOUNTING WITH SINGLE SCREW

STEP 3 Determine which of the included socket head cap screws from the hardware kit will provide maximum thread engagement in the mirror stem without bottoming out.

STEP 4 Place a split lock washer over the socket head cap screw and insert it in the hole in the hand control. FIG 1

STEP 5 Place an internal lock washer over the protruding end of the socket head cap screw.

STEP 6 While holding the mirror in place, thread the socket head cap screw into the bottom of the mirror stem.

NOTE: Ensure that the setscrew in the mirror stem does not prevent the socket head cap screw from being installed fully. FIG 1

STEP 7 Adjust the position of the mirror stem for visibility and clearance; tighten the socket head cap screw and then the setscrew.

H-D with Bottom Mounted Turn Signals—Right Side Procedure



Removing the retainer nut and/or the ball stud clamp in the next Step will release the turn signals from the hand controls. Secure the turn signals to prevent damage or injury.

STEP 9 Loosen and remove the retainer nut and ball stud clamp shown in FIG 2.

STEP 10 Remove the stock mirror; hold the stock turn signal to prevent it from being damaged.

STEP 11 Screw a double ended stud into the new mirror stem; tighten and then tighten the set screw. FIG 2

NOTE: Ensure that the setscrew in the mirror stem does not prevent the double ended stud from being installed fully. FIG 2

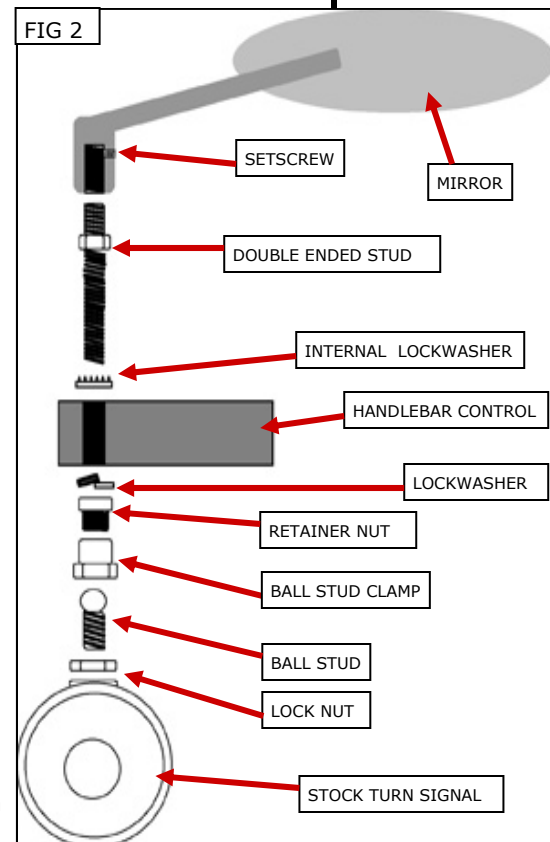
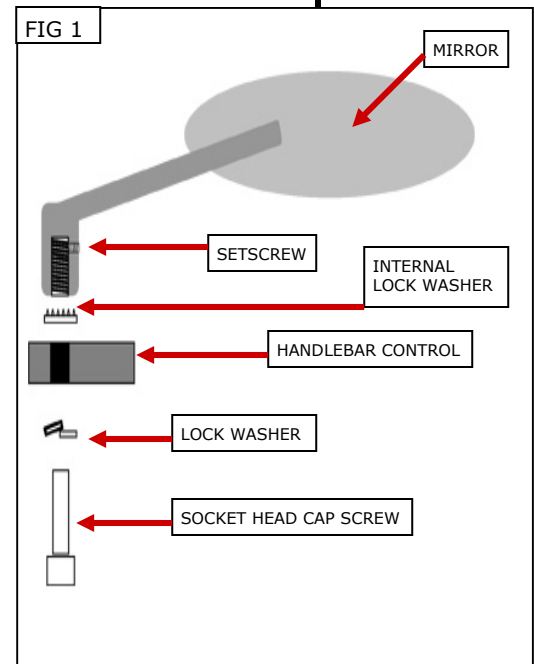
STEP 12 Place an internal lock washer over the long end of one of the double-ended studs; insert the assembly into the mirror stem hole in the hand control. FIG 2

STEP 13 Place a split lock washer over the protruding end of the double-ended stud and thread the retainer nut onto the stud. FIG 2

STEP 14 Adjust the position of the mirror stem for visibility and clearance; tighten the retaining nut.

STEP 15 Install the ball stud clamp onto the retainer nut; adjust the turn signal and tighten the clamp.

STEP 16 Adjust the mirrors for proper view before riding the motorcycle.



PAGE
2

Ride On!

MAGNUM PLUS MIRROR

INSTALLATION