

1097

BAHN SHIFT LINKAGE COVER FOR TOURING — TUXEDO

INFORMATION AND SUPPORT

INFO@BAHNPRODUCTS.COM

866 294 2827

⚠ WARNING

THIS INDICATION ALERTS YOU TO THE FACT THAT IGNORING THE CONTENTS DESCRIBED HEREIN CAN RESULT IN POTENTIAL DEATH OR SERIOUS INJURY.

CAUTION

THIS INDICATION ALERTS YOU TO THE FACT THAT IGNORING THE CONTENTS DESCRIBED HEREIN CAN RESULT IN MINOR OR MODERATE POTENTIAL INJURY.

NOTICE

This indication alerts you to the fact that ignoring the contents described herein may negatively affect product performance and functionality or damage the product itself or the product to which it is being attached.

MAKE SURE THE FOLLOWING PARTS HAVE BEEN INCLUDED IN THE KIT:

- 1 BAHN Shift Rod Cover
 - 1 Hardware Kit containing:
 - 1 Screw Plate
 - 4 #6-32 X 1/4" Socket Head Cap Screws
 - 4 #6 Flat Washer
- 1 Installation Instructions

YOU WILL ALSO NEED:

Set combination wrenches, set of hex wrenches

NOTICE

These installation instructions contain important information. Ensure that the end user receives this copy and is aware of its importance for future reference.

- STEP 1** Read and understand all **STEPS** in the instructions before starting the installation. Park the motorcycle on a hard, level surface and turn **IGN OFF**. Allow the engine and exhaust system to cool. Remove the main fuse.

⚠ WARNING

ACCIDENTAL VEHICLE START-UP COULD CAUSE DEATH OR SERIOUS INJURY, REMOVE THE MAIN FUSE BEFORE PROCEEDING.

YOU WILL BE WORKING AROUND THE ENGINE AND EXHAUST SYSTEM DURING INSTALLATION. ENSURE THAT THE ENGINE AND EXHAUST SYSTEM HAVE FULLY COOLED TO PREVENT INJURY.

1097

BAHN SHIFT LINKAGE COVER FOR TOURING — TUXEDO

INFORMATION AND SUPPORT

INFO@BAHNPRODUCTS.COM

866 294 2827

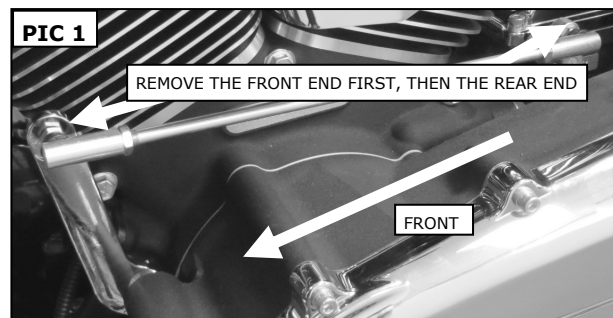
CAUTION

WORKING AROUND THE SHARP EDGES OF THE CYLINDER-HEAD FINS EXPOSES YOUR HANDS TO INJURY. WEAR PROTECTIVE GLOVES TO PREVENT SERIOUS INJURY.

NOTICE

Avoid damage to the motorcycle. Protect painted surfaces with a soft cloth or blanket.

- STEP 2** Refer to **PIC 1**. Remove the nut, lock washer and flat washer from the backside of the front shift arm; remove the front end of the shift rod from the shift arm. Save the hardware for later, it will be reused.



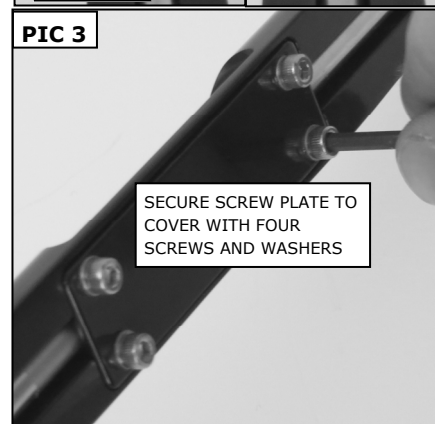
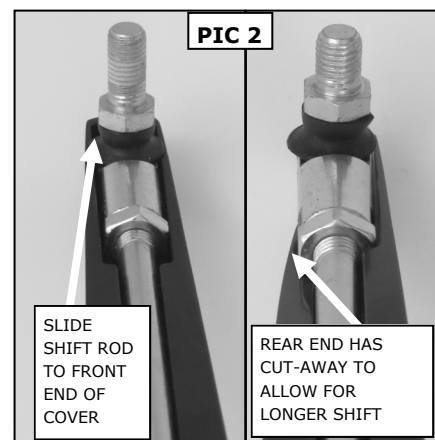
NOTE: The front Heim joint stud is longer than the rear Heim joint stud.

- STEP 3** Remove the rear Heim joint stud from the rear shift arm.

- STEP 4** Refer to **PIC 2**. Lay the shift rod in the BAHN Shift Linkage Cover. Slide the shift rod to the front end of the cover. Ensure that the jam nuts on the shift rod fit all the way in the groove in the cover.

It may be necessary to loosen one of the jam nuts, adjust the Heim joint until the jam nut fits in the groove, then tighten the jam nut.

- STEP 5** Remove the adhesive backing from the included Screw Plate. Refer to **PIC 3**. Place the Plate over the recess in the back of the BAHN Cover; secure the Plate to the Cover with the included #6-32 Screws and #6 Washers. Leave the Screws loose until all four have been started in their threads; tighten the screws.



1097

BAHN SHIFT LINKAGE COVER FOR TOURING — TUXEDO

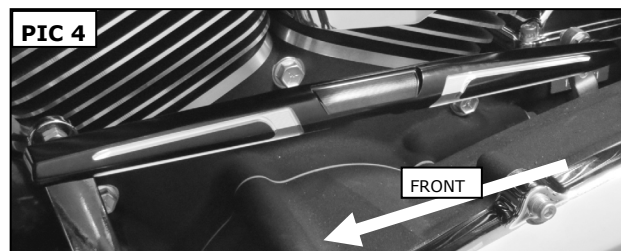
INFORMATION AND SUPPORT

INFO@BAHNPRODUCTS.COM

866 294 2827

STEP 6 Refer to **PIC 4**. Carefully reinstall the shift rod in the reverse order it was removed. Take care to not scratch the BAHN Cover when tightening the fasteners.

STEP 7 Reinstall main fuse. Ensure proper function of all shifting functions **BEFORE** motorcycle start-up.



TIPS FOR PROPER CARE:

Your new BAHN product is made out of anodized aluminum. Anodized aluminum requires special attention when cleaning. Some cleaning products or procedures can actually remove the anodized treatment which will lead to pitting in the aluminum.

Thoroughly clean the BAHN product often with a soft cloth, mild soap and water. Regular cleaning keeps contaminants from building up.

Rinse thoroughly with **FRESH** water.

Use only metal protection products that are formulated for anodized aluminum.

DO NOT USE bleach or chlorides to clean the BAHN product.

DO NOT USE products containing abrasives to clean the BAHN product. **Never** use steel or brass wool, wire brushes, polishing wheels, rubbing or polishing compounds on the BAHN product.

DO NOT USE concentrated alkaline based solutions to clean the BAHN product. Many detergents are alkaline based.

NOTICE

It is the end user's responsibility to ensure that all of the fasteners (including pre-assembled) are tightened before operation of the motorcycle. Küryakyn will not provide warranty coverage on products or components lost due to improper installation or lack of maintenance. Periodic inspection and maintenance are required on all fasteners.

LIMITED WARRANTY

Küryakyn warrants that any Küryakyn products sold hereunder, shall be free of defects in materials & workmanship for a period of one (1) year from the date of purchase by the consumer excepting the following provisions:

1. Küryakyn shall have no obligation in the event the customer is unable to provide a receipt showing the date the customer purchased the product(s).
2. The product must be properly installed, maintained & operated under normal conditions.
3. Küryakyn shall not be liable for any consequential & incidental damages, including labor & paint, resulting from failure of a Küryakyn product, failure to deliver, delay in delivery, delivery in nonconforming condition, or for any breach of contract or duty between Küryakyn & a customer.
4. Küryakyn products are often intended for use in specific applications. Küryakyn makes no warranty if a Küryakyn product is used in applications other than intended.
5. Küryakyn electrical products are warranted for one (1) year from the date of purchase by the consumer. L.E.D.'s contained in components of Küryakyn products will be warranted for defects in materials & workmanship for 3 years from the date of purchase where as all other components shall be warranted for one (1) year. This includes, but is not limited to; control modules, wiring, chrome & other components.
6. Exhaust systems are warranted for manufacturing defects only. There is no warranty on exhaust pipes & mufflers with regard to any discoloration. Discoloration or "blue-ing" is caused by tuning characteristics, exhaust timing, carburetor jetting, overheating, etc. & is not caused by defective manufacturing.
7. Küryakyn makes no warranty of any kind in regard to other manufacturer's products distributed by Küryakyn. Küryakyn will pass on all warranties made by the manufacturer & where possible, will expedite the claim on behalf of the customer, but ultimately, responsibility for disposition of the warranty claim lies with the manufacturer.
8. Merchandise purchased directly from internet auction sites or any other third party seller is considered sold as is & shall not carry a Küryakyn warranty. All warranty claims must be directed to the original seller. If unsure please contact the seller to verify they are an authorized Küryakyn retailer.